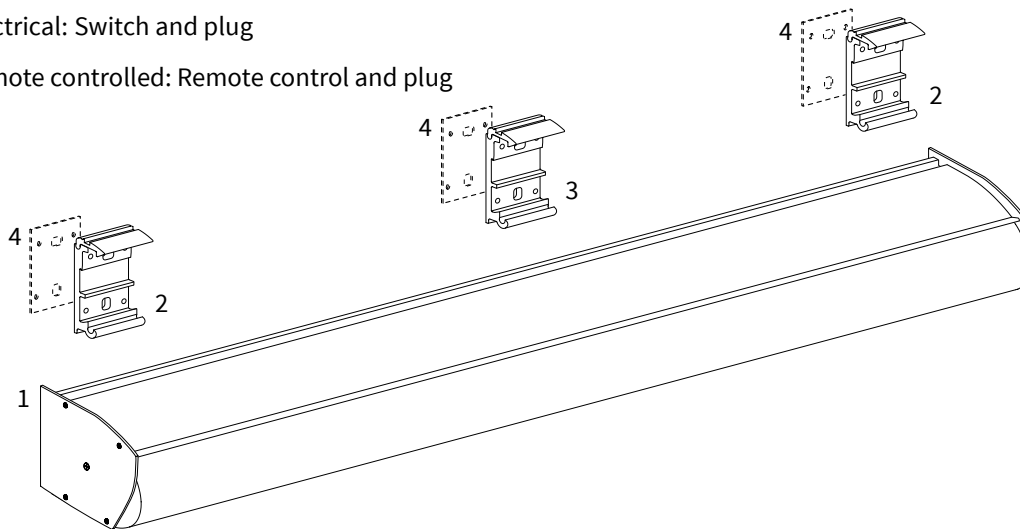


INSTALLATION MANUAL  
**AWNING V80 - CANNES**

## Content

1. Awning \*
2. Wall supports
3. Extra support(s) (with an awning bigger than 350 cm)
4. Mounting plates (optional)
5. Control
  - a. Manual operation: Crank handle
  - b. Electrical: Switch and plug
  - c. Remote controlled: Remote control and plug



\* The pictured awning is motorized.

## Necessary tools

- Drilling machine
- Masonry drill 10/14 mm
- Crosshead screwdriver
- Socket wrench 17
- Allen key 6
- Tapeline
- Level
- Pencil

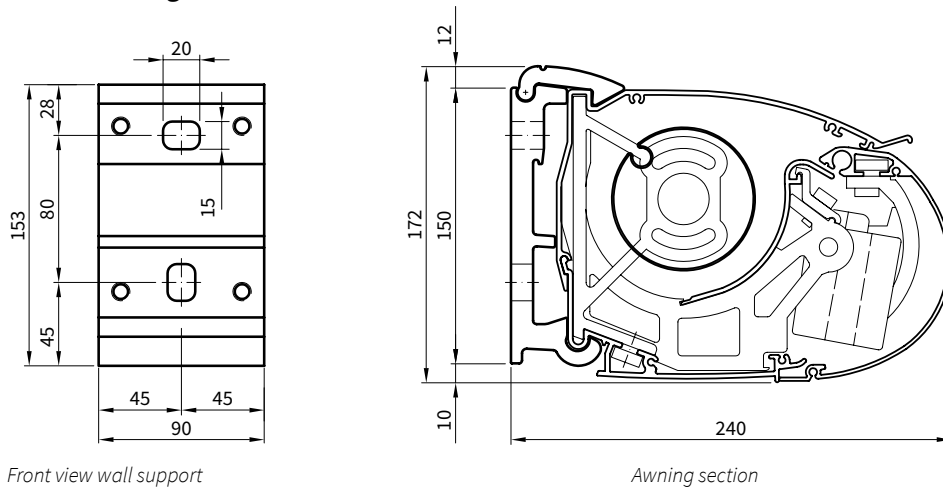
In case of electrical control:

- Nippers
- Flathead screwdriver

## Specifications V480 Cannes

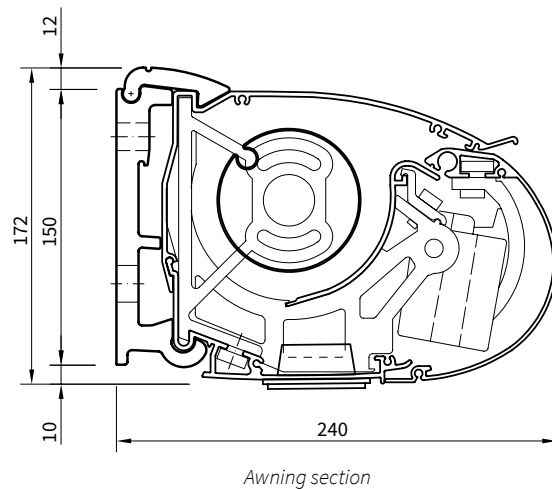
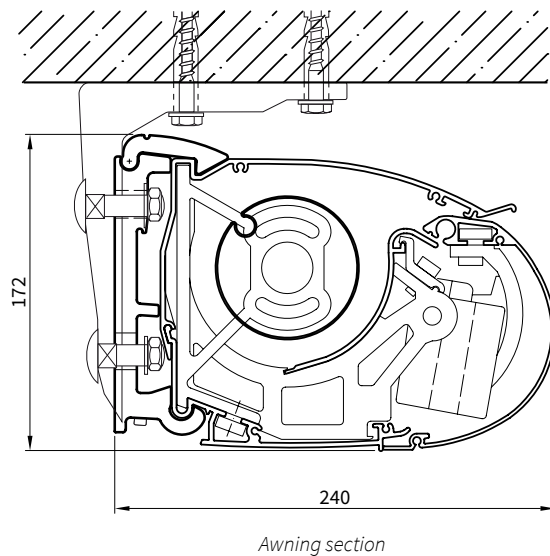
### Wall mounting

Sizes in mm



### Ceiling installation

### Integrated lighting included



## Overview wall supports

Fabric type	Fabric length [mm]	Pro-jection [mm]	Width [mm]														Required number of wall supports	
			2500	3000	3500	4000	4500	5000	5500	6000	6500	7000	8000	9000	10000	11000	12000	
All	All	Type	300 / 180 / 90	300 / 180 / 90	300 / 180 / 90	300 / 180 / 90	300 / 180 / 90	300 / 180 / 90	300 / 180 / 90	300 / 180 / 90	300 / 180 / 90	300 / 180 / 90	300 / 180 / 90	300 / 180 / 90	300 / 180 / 90	300 / 180 / 90	300 / 180 / 90	
		1500	0 / 0 / 2	0 / 0 / 2	0 / 0 / 2	0 / 0 / 3	0 / 0 / 3	0 / 0 / 4	0 / 0 / 4	0 / 0 / 4	0 / 0 / 4	0 / 0 / 6	0 / 0 / 6	0 / 0 / 6	0 / 0 / 8	0 / 0 / 8	0 / 0 / 8	
		2000	0 / 0 / 2	0 / 0 / 2	0 / 0 / 2	0 / 0 / 3	0 / 0 / 3	0 / 0 / 4	0 / 0 / 4	0 / 0 / 4	0 / 0 / 4	0 / 0 / 6	0 / 0 / 6	0 / 0 / 6	0 / 0 / 8	0 / 0 / 8	0 / 0 / 8	
		2500	-	0 / 0 / 2	0 / 0 / 2	0 / 0 / 3	0 / 0 / 3	0 / 0 / 4	0 / 0 / 4	0 / 0 / 4	0 / 0 / 4	0 / 0 / 6	0 / 0 / 6	0 / 0 / 6	0 / 0 / 8	0 / 0 / 8	0 / 0 / 8	
		3000	-	-	0 / 0 / 2	0 / 2 / 1	0 / 2 / 1	0 / 2 / 2	0 / 2 / 2	0 / 2 / 2	0 / 2 / 2	0 / 3 / 3	0 / 4 / 2	0 / 4 / 2	0 / 4 / 4	0 / 4 / 4	0 / 4 / 4	
		3500	-	-	-	0 / 2 / 1	0 / 2 / 1	0 / 2 / 2	0 / 2 / 2	0 / 2 / 2	0 / 2 / 2	0 / 3 / 3	0 / 4 / 2	0 / 4 / 2	0 / 4 / 4	0 / 4 / 4	0 / 4 / 4	
		4000	-	-	-	-	2 / 0 / 1	2 / 0 / 2	2 / 0 / 2	2 / 0 / 2	2 / 0 / 2	3 / 0 / 3	3 / 0 / 3	4 / 0 / 2	4 / 0 / 4	4 / 0 / 4	4 / 0 / 4	

## Important before mounting

### General warning

Installation of the Verano® product yourself is at your own risk. Only use this instruction as a tool and for the installation of this specific Verano® product. If you cannot install the product yourself, you can always opt for professional installation. The installation team of Verano® is pleased to help you.

### Be careful for damages

Don't use a knife or any other sharp object when opening the packing. This may cause damage to the content of the package. Put the content of the package on a soft surface. Be careful when drilling, falling drill cuttings can cause damages. Check for a plane window frame or façade.

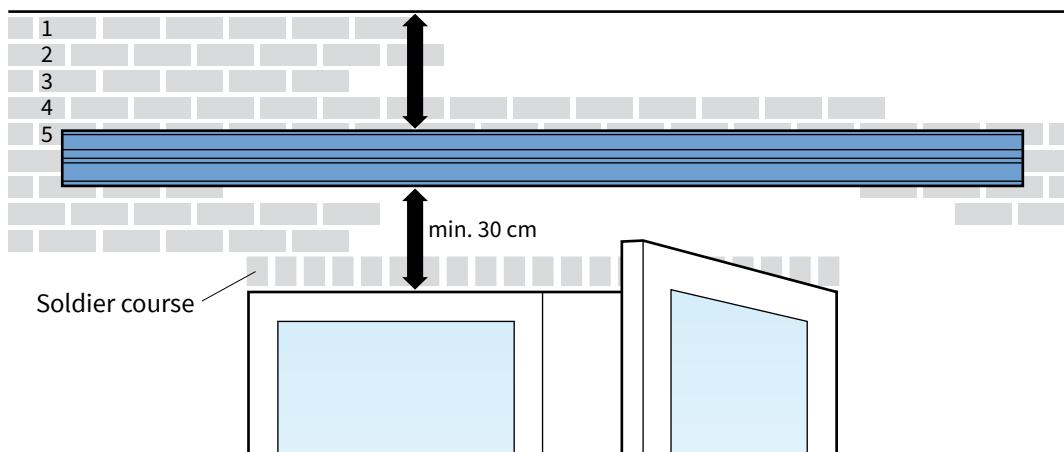
### Check the installation height

Make sure that you have enough installation height on your façade to place the awning. Above the wall support (mounting support) have to be 5 rows of stones to prevent too much pressure on the façade. This is not often the case with a house-extension. It is recommended to drill the installation hole in the fifth stone (minimum) measured from the top.

### Wall strips

When there are fewer than five rows of stones above the wall support, wall strips have to be used. These strips divide the forces over a bigger wall surface when the walls are too weak. View page 5 for extensive instructions.

**Attention!** Make sure there is no installation point in the soldier course. These are often half stones.



### Patio door

When the awning is fully open, it hangs down under the angle. Therefore we advise to keep at least 30 centimeters between the window frame and the awning in a situation with patio doors to the outside. When possible, it is advisable to hang the awning higher than 30 centimeters above the window frame.

## 1. Installation of the wall supports

### 1.1 Marking the holes

View the stickers on the back side of the awning. See figure 1.1.

The heart of the wall supports needs to be placed where the stickers are located.

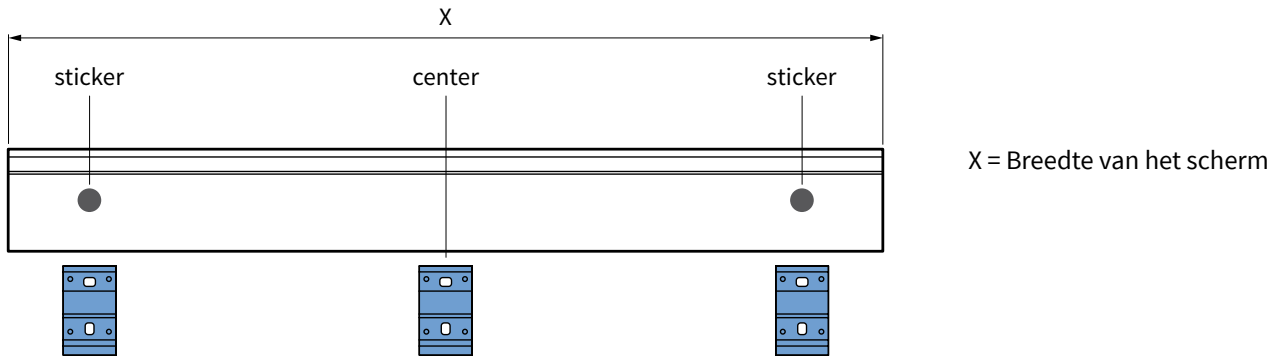


fig. 1.1 Location stickers

The heart of the wall supports needs to be installed at the same height as the stickers.

Mark the drill holes on the wall. If the number of delivered wall supports is larger than the number of arms (red sticker) in the awning, you need to divide the other wall supports equally over the width of the awning.

The wall supports need to be levelled, both horizontal and vertical. See figure 1.2. If necessary, use a cord to level.

Make sure that the drill holes are mostly in the middle of the stone. See figure 1.3.

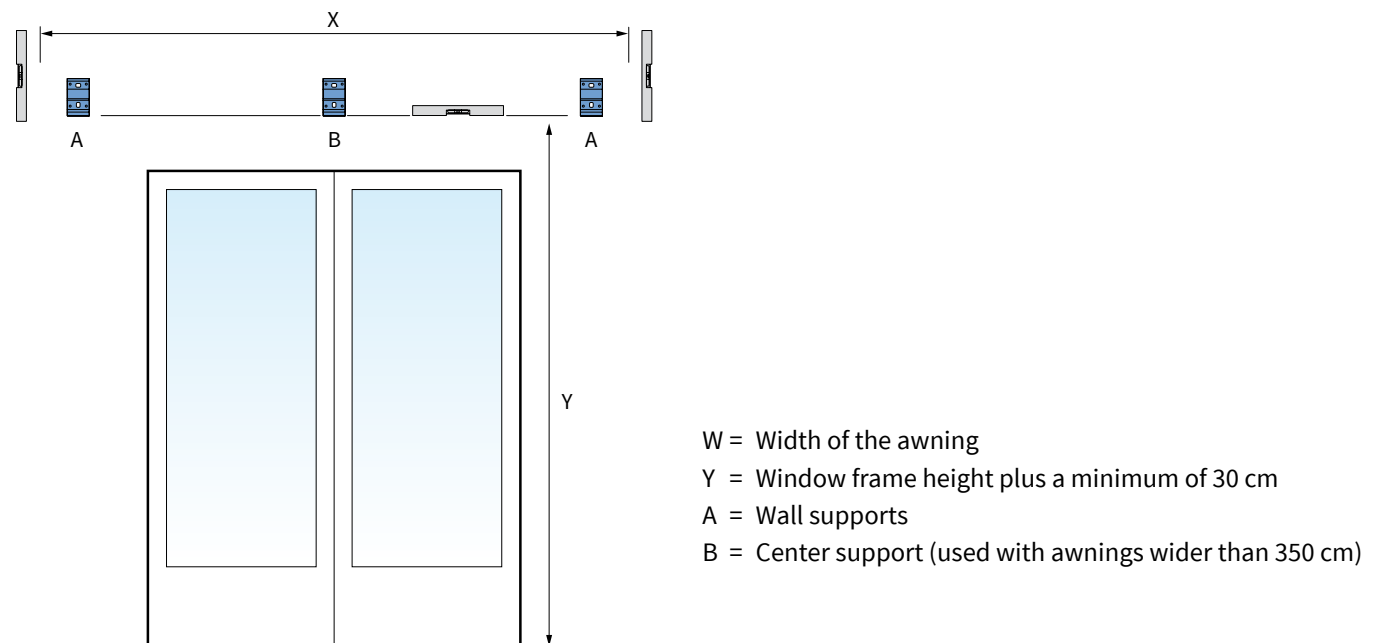


fig. 1.2 Placing the wall supports

## 1.2 Drilling the holes

Drill the installation holes. Our advise is to drill with a 14 millimeter masonry drill in case of a wall made of concrete or stone. Use matching plugs and bolts of high quality. (our advice 14 mm plug, 10-12 mm bolt).

Install the wall supports and tighten the bolts.  
Optionally, use installation plates if the wall is uneven.  
See figure 1.3.

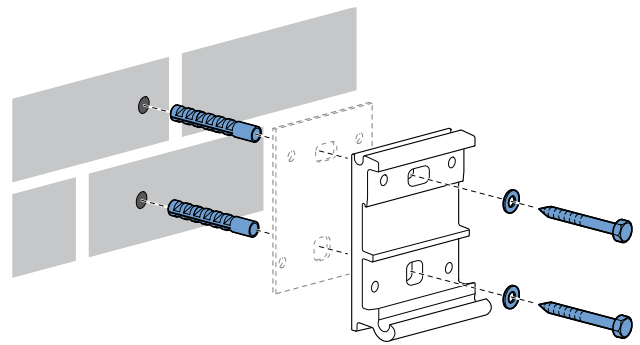


fig. 1.3 Installation wall support and mounting plate (optional)

## 1.3 Drilling the control hole

If you want to connect your wall control on the inside, measure the place of the control hole carefully. This depends on your personal preference and situation.

Drill inwards with a 10 millimeter drill. When drilling through the wall, it is advisable to place a shelf against the inner side of the wall to prevent damages to the wall.

## 1.4 Extra wall support weak wall

If there are less than five rows of stones above the installation location, extra wall supports are needed.  
The extra wall supports divide the power over a larger wall surface. This way the wall can carry more weight.  
See figure 1.4.

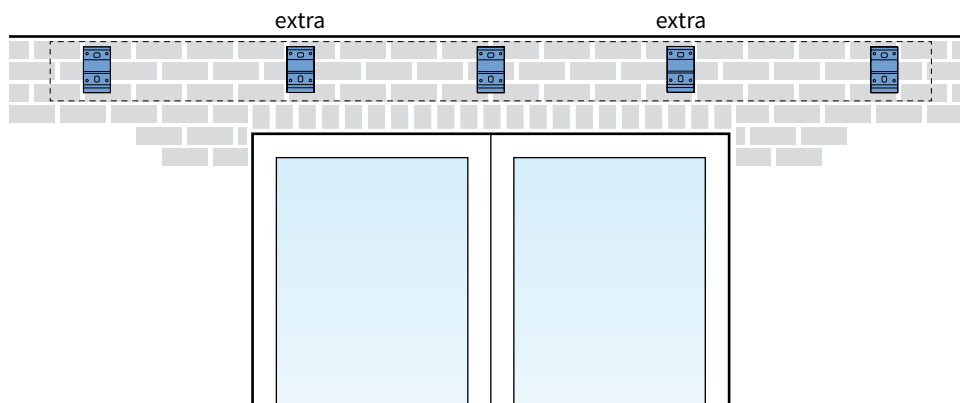


fig. 1.4 Applying extra wall supports

## 2. Installation of the awning

### 2.1 Placing the awning

1. Hang the awning in the wall supports. See figure 2.1.

**Attention!** Only loosen the long allen bolts (a) in the lower part of the wall support, don't fully unscrew!

2. Lay the awning in the lower hook (arrow 1) of the wall support and push it backwards (arrow 2) until all the wall supports are hooked to the awning.
3. Screw the long allen bolts (a) in the lower part of the awning and make sure that the awning can not be loosened from the wall supports.

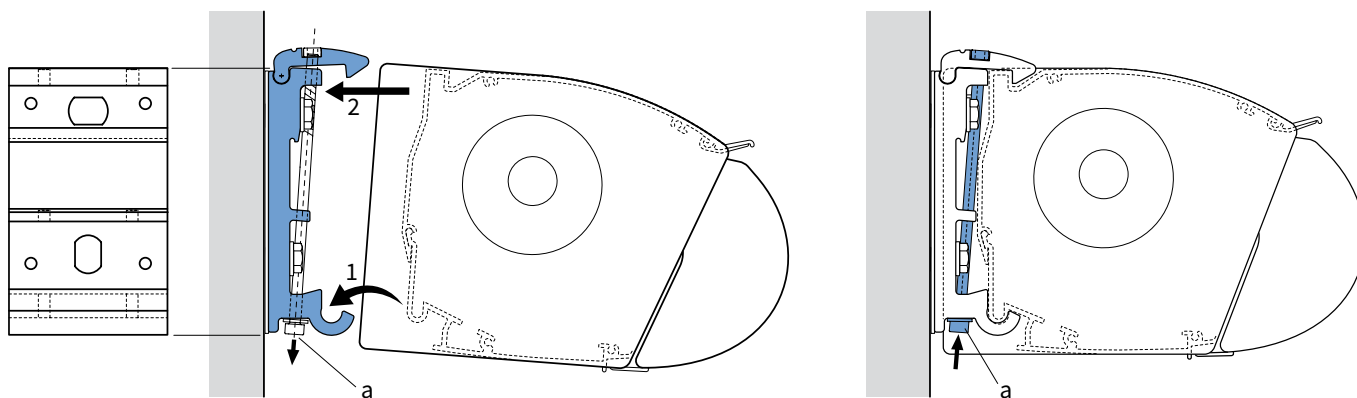


fig. 2.1 Placing the awning

### 3. Electrical wall control

#### 3.1 Connecting the wall control

1. Check the position of the motor (left or right), seen from the outside!
2. If you have inside control, first guide the cable through the hole in the wall you drilled before.
3. Connect the four-wired cord of the motor and the three-wired cord with plug following the scheme below.
4. Put the plug in the power point.
5. The awning is now connected. Before you continue the installation, check if the awning rolls out correctly.

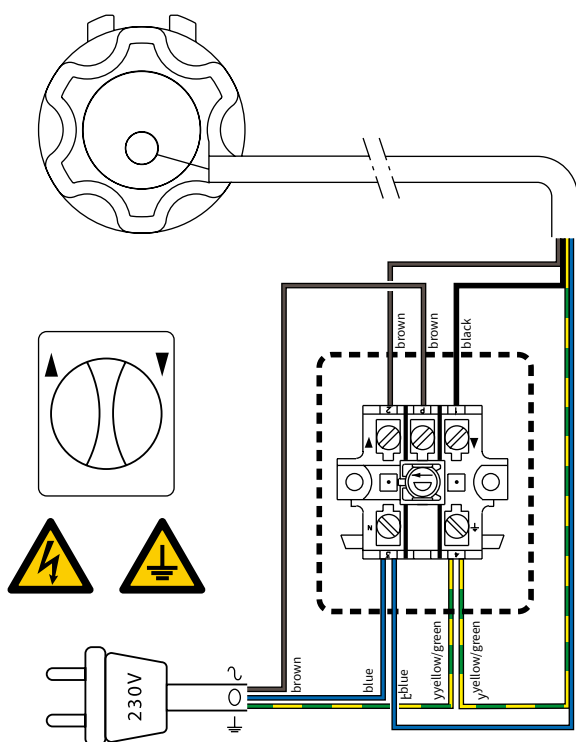


fig. 3.1 Motor left (seen from the outside)

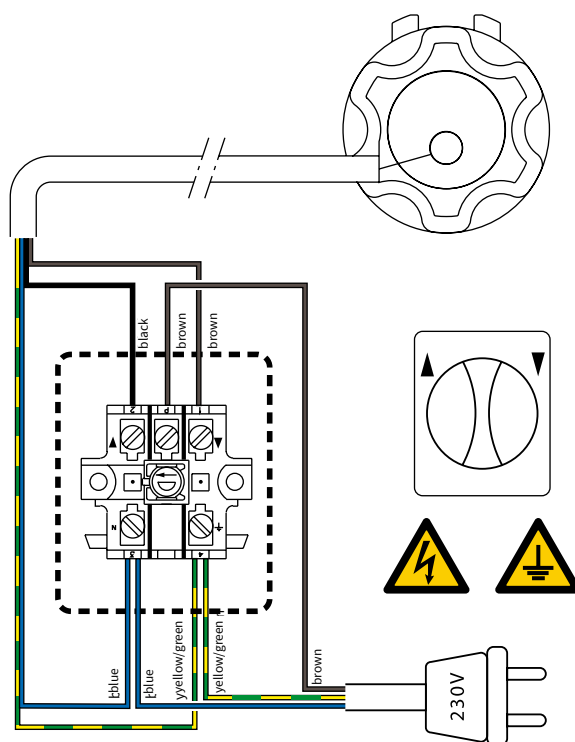


fig. 3.2 Motor right (seen from the outside)

#### TIP! Sealing the hole

In case of an electrical wire to the inside, we advise to seal the hole where the wire comes in. This to prevent moisture from running inwards. Attention! Do this both on the in- and outside.

#### 3.2 Standard factory setting

The motor control is set standardly.

See the included manual of the motor and the possible remote control.



## **4. Remote control**

### **4.1 Connecting the remote control**

1. If the power point is located on the inside, first guide the wire through the hole in the wall you drilled before.
2. Install the plug according to the color scheme below:

Brown	220V power supply
Blue	220V power supply
Yellow/green	grounding
Black	(do not connect)
White	(do not connect)
Orange	(do not connect)
3. Put the plug in the power point.
4. The awning is now connected. Before you continue the installation, check if the awning rolls out correctly by using the remote control.

### **TIP! Sealing the hole**

In case of an electrical wire to the inside, we advise to seal the hole where the wire comes in. This to prevent moisture from running inwards. Attention! Do this both on the in- and outside.

## 5. Pitch

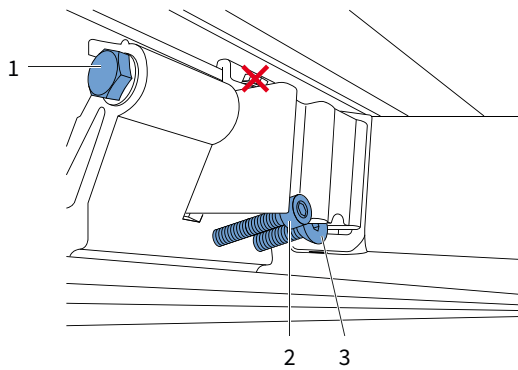
### 5.1 Standard factory setting

The passage height for the front bar is standard set between 1,80 and 1,90 meter at an installation height of 2,70 meter.

### 5.2 Setting the pitch

If you want to set the awning different from the standard factory setting, please follow the steps below:

1. Completely roll out the awning. The arm-connections are located left and right at the beginning of the folding arms (on the side of the box). See figure 5.1.
2. Loosen nut #1 with one stroke (wrench 17). Unscrew hexagon-head bolt #1 in one turn (socket wrench 17).
3. Unscrew allen screw #2.
4. Turn allen screw #3 clockwise to lower the arm and to lift it anti-clockwise. During the turning, lift the front bar to move allen screw #3 easily.
5. Set both arms until the desired slope is reached and the front bar is levelled.
6. Secure everything by screwing allen screw #2 and hexagon-head bolt #1.
7. If the elbow of the arm is too high, loosen hexagon-head bolt #1.



**Attention!** Never touch the nut with a red cross.

fig. 5.1 Detail left arm-connection

## 6. Front bar

### 6.1 Setting the front bar

The right position is reached if the front bar connects perfectly to the top- and bottom cover when the awning is closed. See figure 6.1.

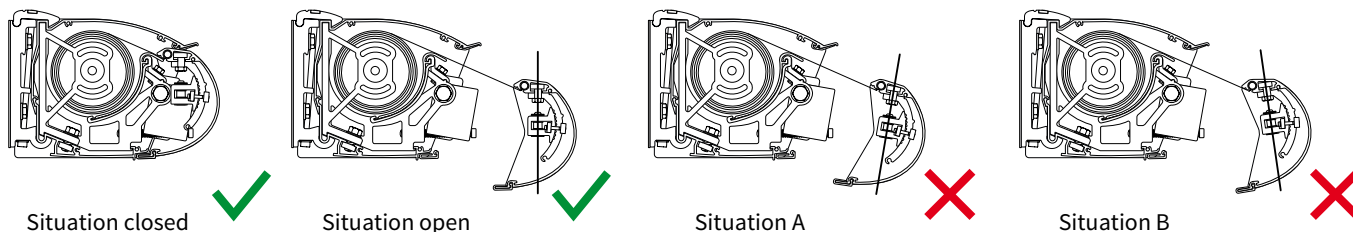


fig. 6.1 Position front bar

If the slope changes, the front bar needs to be set also to ensure a proper closure of the awning.

1. Unroll the awning about half a meter.

The front bar connections are located at the end of the folding arms (side of the front bar). See figure 6.2.

2. Loosen allen screw #1 at all front bar connections, don't fully unscrew!
3. Open clamping strip #2 a little bit using a flathead screwdriver.
4. The ribs in the front bar connection make it possible to set the front bar very precise. The setting of the front bar needs to be done at the same time for all arms.
5. Screw allen screw #1 to the front bar connection.
6. Pull in the awning.

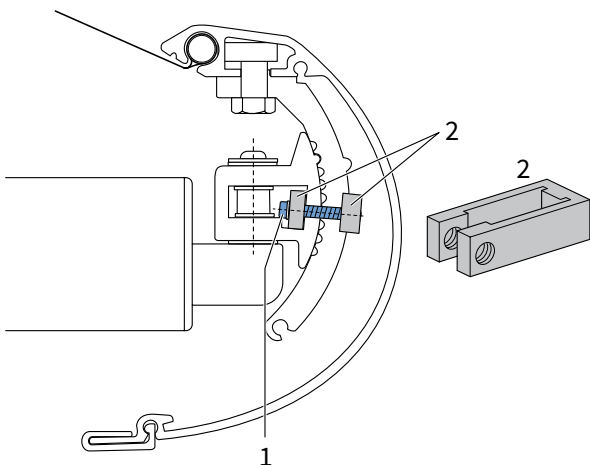


fig. 6.2 Detail front bar connection

## 7. Valance

### 7.1 Installation of the valance

Follow the steps below for the installation of the valance. See figure 7.1.

1. Unscrew the cover of the front bar on one side. The fabric tendon is locked in the front bar.
2. Slide the fabric tendon in the valance at the side where the fabric is open.
3. Slide the valance carefully in the intended recess. Make sure that you guide the valance well to prevent ripping of the fabric!
4. Mount the cover on the front bar.

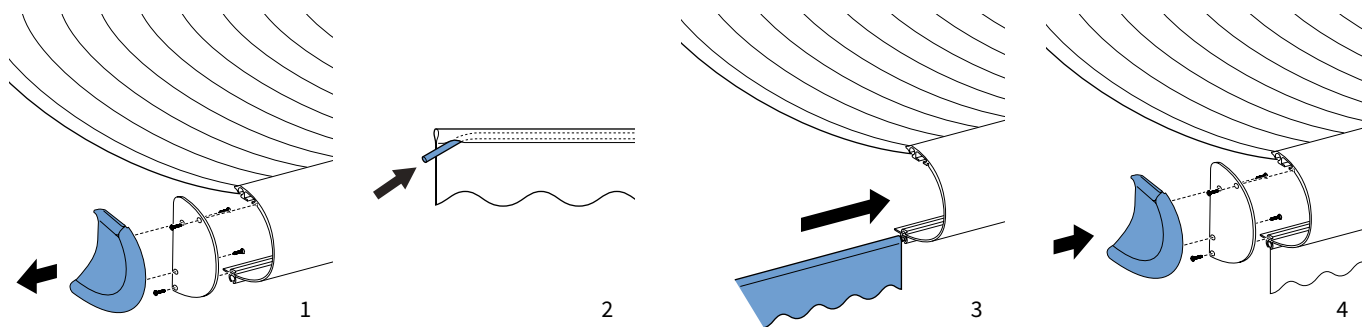


fig. 7.1 Placing the valance

## 8. Attention points

**Warning!** The fabric always needs to move on top.

**Warning!** Always check if the plastic protection strips (b) are located exactly beneath the seams in the fabric gutter (a).  
See figure 8.1.

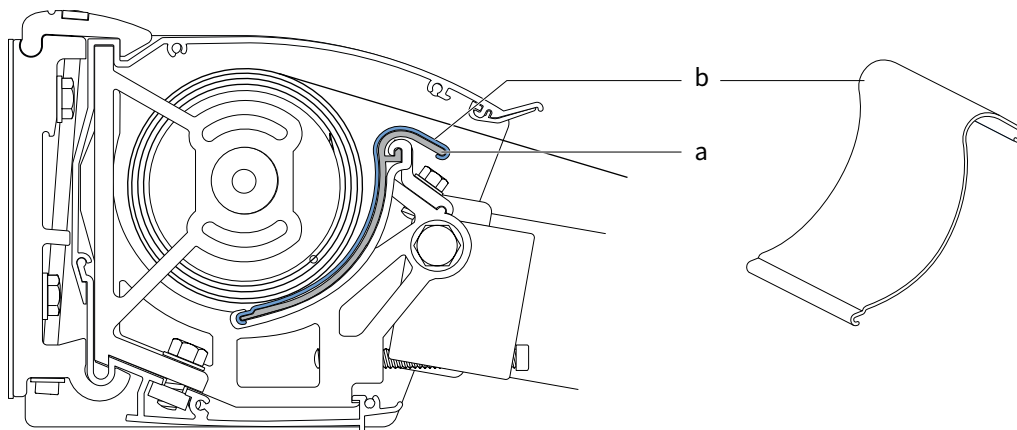


fig. 8.1 Protection strip in the fabric gutter.

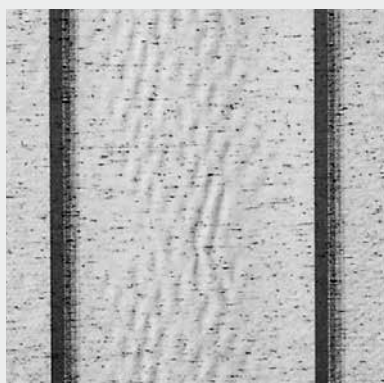
## User information

A high quality cloth is integrated into your chosen screen. In view of optimal quality we have chosen a high technology production process in which every step of the production is strictly selected. By way of automation, permanent checks, laboratory tests and finely detailed after-care, nothing is left to chance. This allows us to guarantee the resistance as well as the strength and durability of the colours of your screen for many years to come.

Starting with a completely pigmented poly-acryl material, which gives it its exceptional quality, our screens have the advantage of total monitoring during the production process. In spite of all this there may be small irregularities in your screen that are difficult to detect and impossible to avoid. They are inherent in all technical materials but do not reduce the technical presentation and durability of your screen.

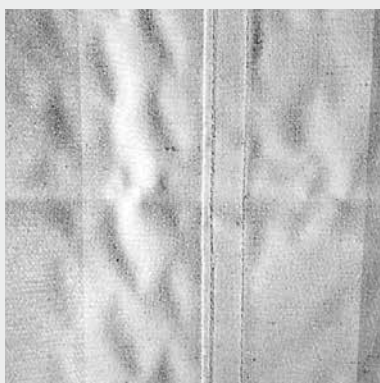
Waffling, chalk stripes, small pleats next to the seam or in the middle of the screen or nap can appear. The retailer cannot be held responsible for these irregularities.

Cable motor: if broken off, cannot be guaranteed.



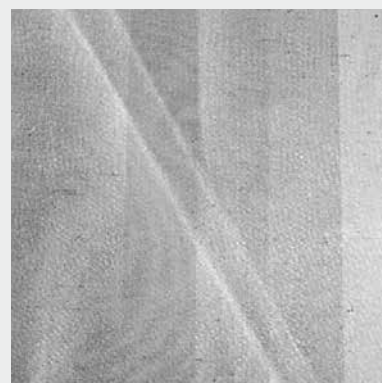
### **Wave forming or wrinkle forming**

All technical materials can display these symptoms in the middle of a canvas. They are especially noticeable with backlight through the difference in light reflection.



### **Wave forming**

Next to the seams, caused by the unavoidable tension difference in rolling up.



### **Fold stripes/ chalk stripes**

A fold caused during the manufacture, can show a darker stripe by light reflection. This is mostly noticeable in lighter coloured blinds.

These small irregularities have no effect whatsoever on the quality of the screen and do not constitute the screen being replaced. However do inform us if you notice any irregularities in colour fastness, decay or resistance, in fact in any of the basic characteristics of our 2-year guarantee.