



INSTALLATION MANUAL

RITZSCREEN®

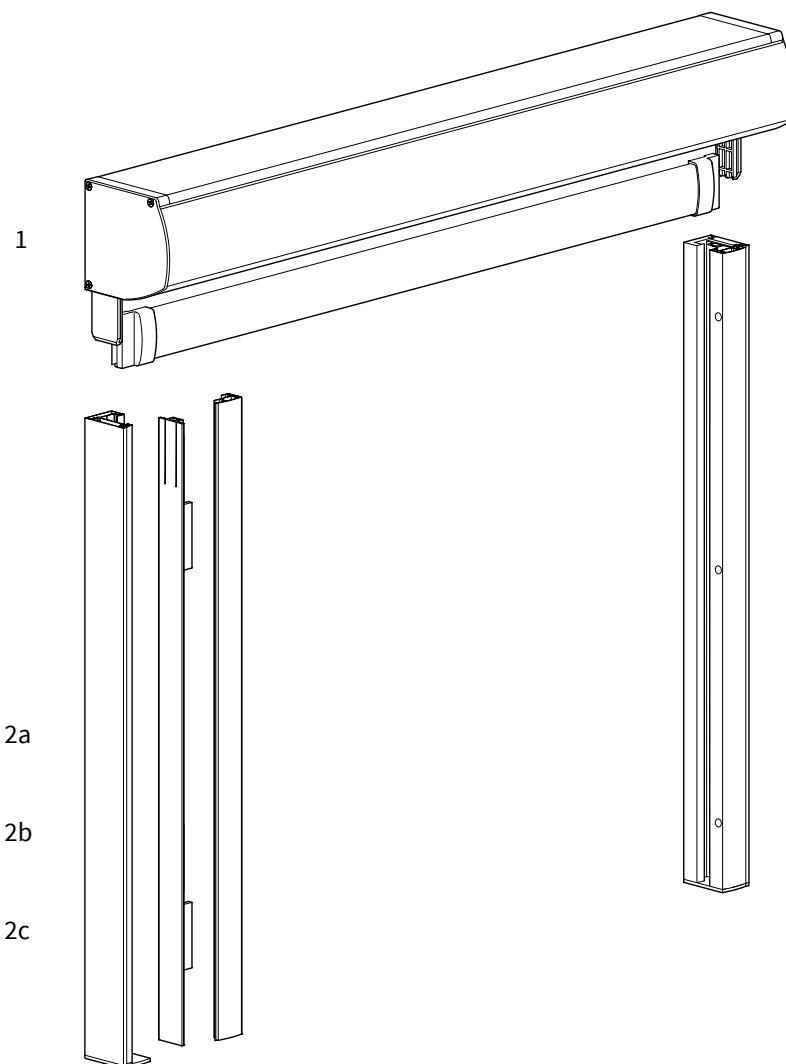
V540

V599 - V599R

V599 L - V599 XL

Content

1. Screen cover with fabric and motor
2. Side guides
 - a. back profile
 - b. insert provided with neoprene (Ritz guide)
 - c. front profile
3. Mounting set
4. Control
 - a. electrical: switch and plug
 - b. remote control: remote control and plug



Necessary tools

- Drilling machine
- Metal drill 6/10 mm
- Masonry drill 6/10 mm
- Crosshead screwdriver
- Hex key
- Tapeline
- Level
- Pencil

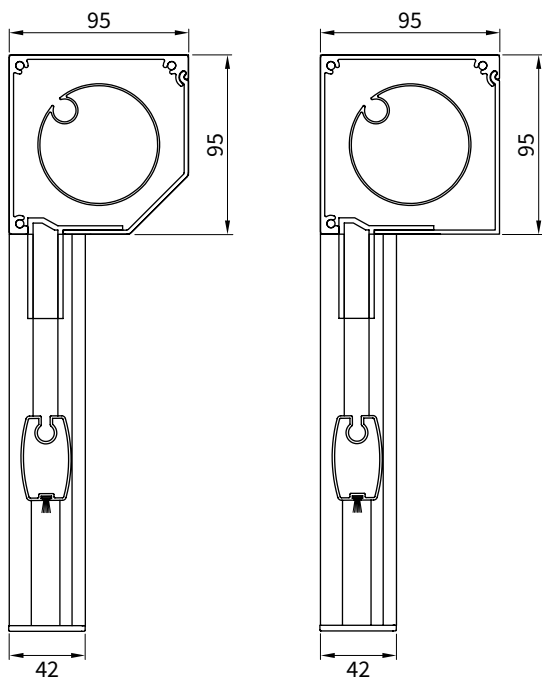
In case of electrical control:

- Nippers
- Flathead screwdriver

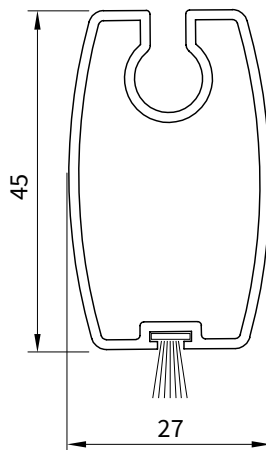
Specifications Ritzscreens®

Ritzscreen® V540

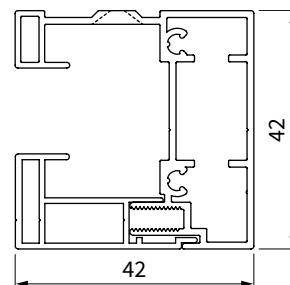
Measurements in mm



section cover (K), bottom bar (O) and guide (G)



section bottom bar (O)



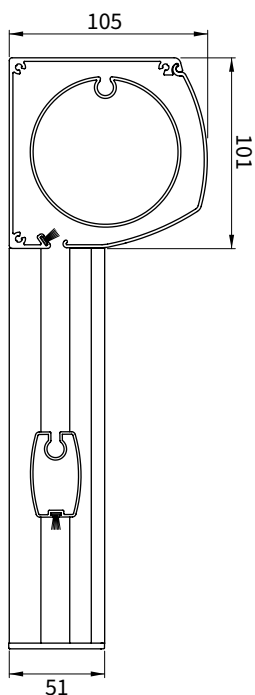
section guide (G) right

Maximum ordering size V540 = 3000 mm

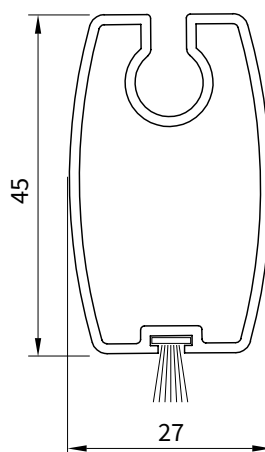
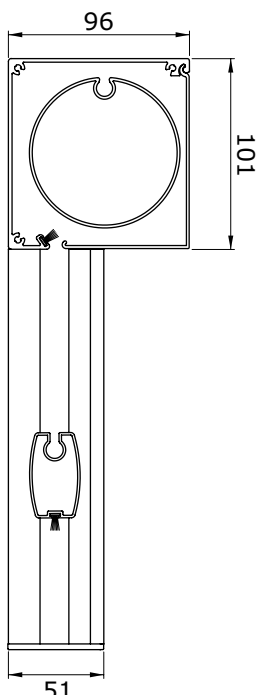
Attention! The Ritzscreen® V540 is delivered with guides provided with predrilled mounting holes in the back profile. Only use flat counter-sunk screws.

Ritzscreen® V599

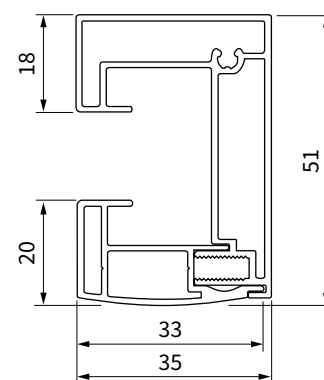
Ritzscreen® V599R



section cover (K), bottom bar (O) and guide (G)



section bottom bar (O)



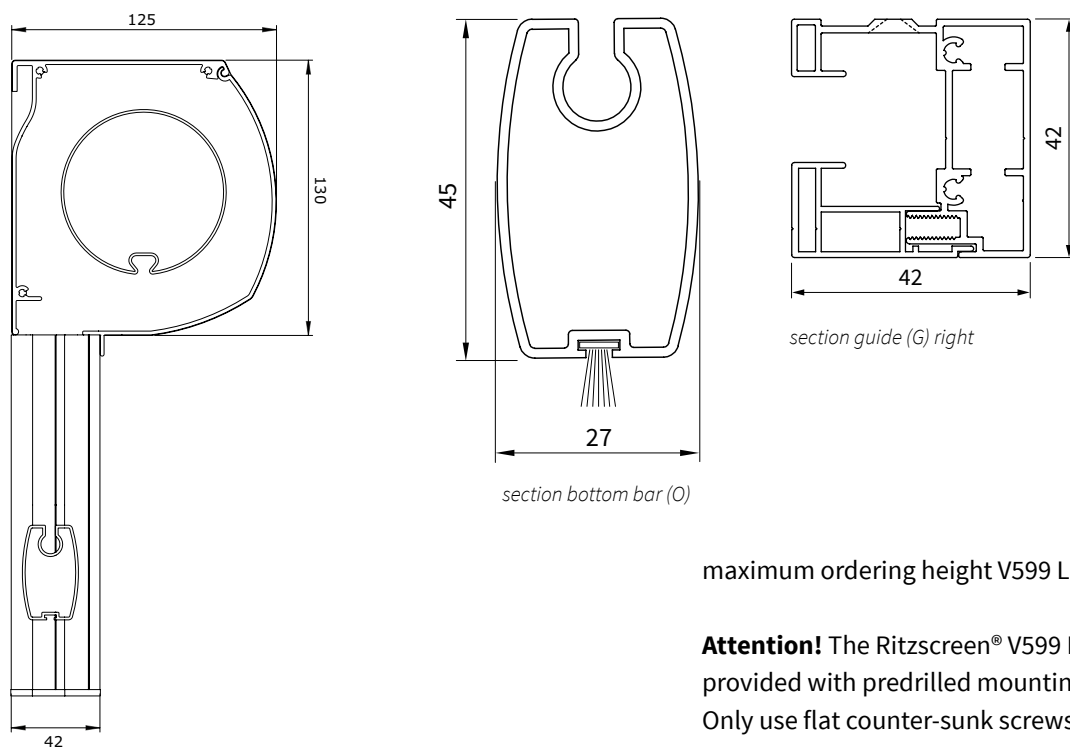
section guide (G) right

maximum ordering height V599 = 3500 mm
maximum ordering height V599R = 3100 mm

Specifications Ritzscreens®

Ritzscreen® V599 L

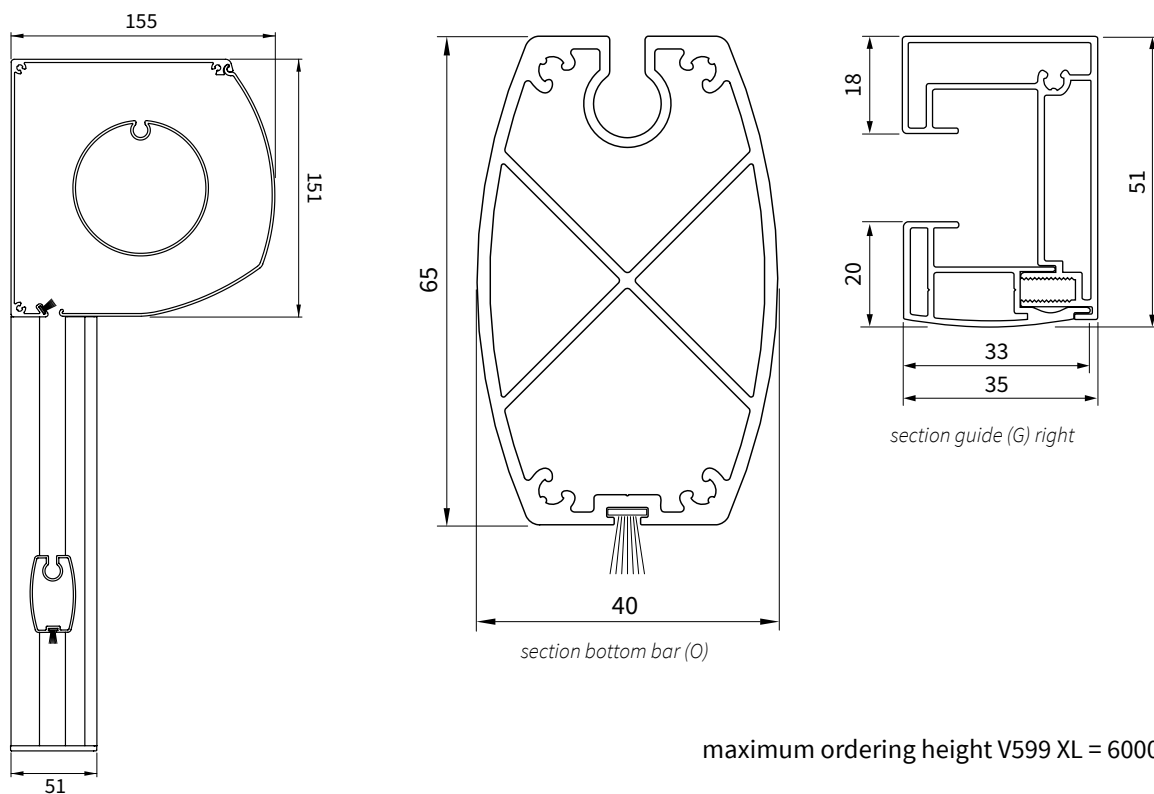
Measurements in mm



maximum ordering height V599 L = 5000 mm

Attention! The Ritzscreen® V599 L is delivered with guides provided with predrilled mounting holes in the back profile. Only use flat counter-sunk screws.

Ritzscreen® V599 XL



maximum ordering height V599 XL = 6000 mm

section cover (K), bottom bar (O) and guide (G)



Important before mounting

General warning

Mounting the Verano® product yourself is at your own risk. Only use this instruction as a tool and for the mounting of this specific Verano® product. If you cannot mount the product yourself, you can always opt for professional mounting. The mounting team of Verano® is pleased to help you.

Be careful for damages

Don't use a knife or any other sharp object when opening the packing. This may cause damage to the content of the package. Put the content of the package on a soft surface. Be careful when drilling, falling drill cuttings can cause damages.

Check if the window frame or façade is flat and smooth.

1. Instruction placing the screen (outside)

The guides consist of three parts:

- back profile
- insert provided with neoprene (Ritz guide)
- front profile

These three parts are pushed together in the package. Separate the parts before mounting.

1.1 Marking the mounting holes in the back profile (only for V599 - V599R - V599 XL)

There are no holes in the back profile (a) of the guides. The amount of holes and the placing of the holes depends on the subsurface and the size of the screen. The subsurface of the window frame can be made of wood, metal or concrete.

- Place the left back profile vertically, at the correct height, against the façade or the window frame. View figure 1.1.
- Mark the mounting holes on the guide. The choice for inside mounting or outside mounting determines how the back profile needs to be mounted. When mounted on the wall you need to take care that the mounting holes are in the middle of the stone and not in the seam of the stone!

The first hole at the attachment point on the screen cover needs to be drilled at least 15 cm from the edge. This space should be kept clear for the cover support. The lowest hole needs to be drilled at least 2 cm from the bottom.

- Place the right back profile at the correct height and width against the wall and mark the mounting holes in the same way.

Attention! The left and right back profile need to be levelled exactly. Use a shelf or level to check this.

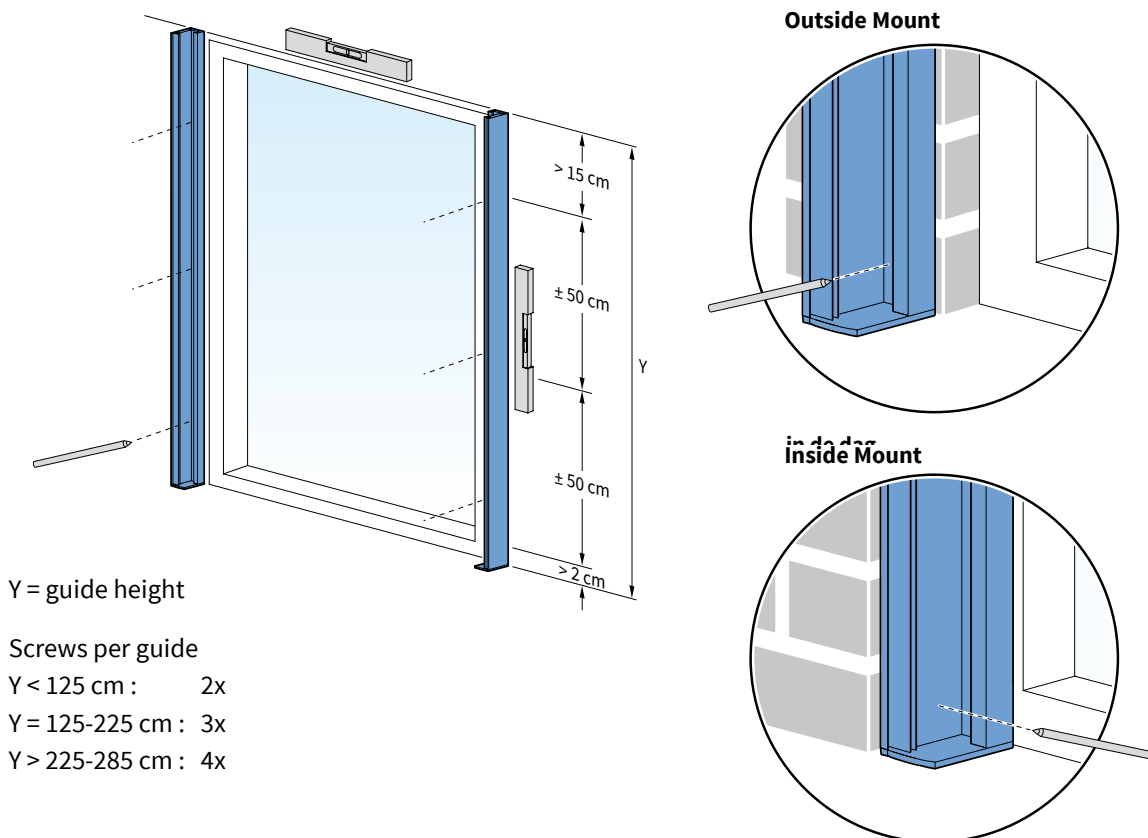


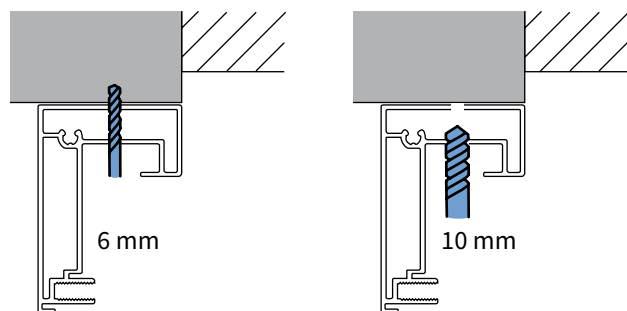
fig. 1.1 Marking the mounting holes

1.2 Drilling the mounting holes in the back profile

The screw holes need to be duplicated. The profile is provided with a drill line as an aid tool for the drilling. View figure 1.2.

1. Drill a hole of 6 mm through both layers in the back profile of the guide.
2. After that, drill the hole with a 10 mm drill so that the screwdriver fits through.

Outside Mount



Inside Mount

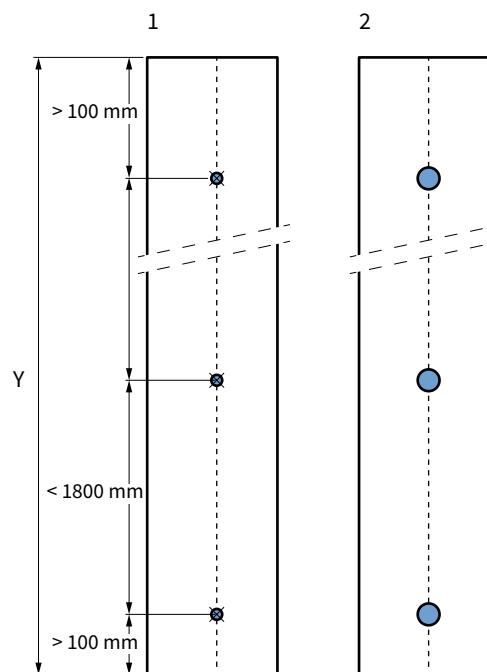
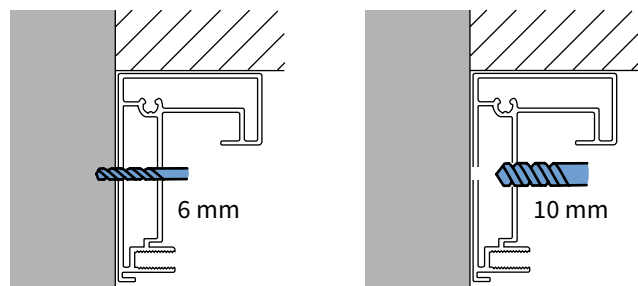
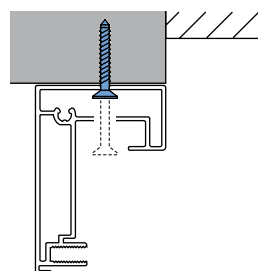


fig. 1.2 Drilling mounting holes

1.3 Mounting the guide

1. Place the back profile of the guides back against the façade or the window frame. Make sure that the guides are perpendicular with the wall. You can mark the drill holes at the wall or the window frame on the base of the holes in the guides.
2. Drill the final holes. Mind the size of the screws and plugs that you are going to use.

Outside Mount



Inside Mount

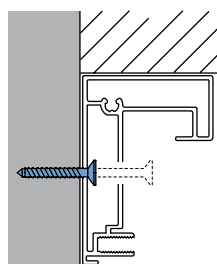


fig. 1.3 Mounting the back guide

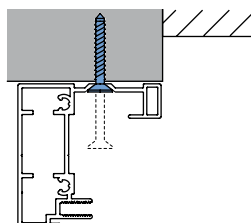
3. Screw the guides tight. Tighten the top screws loosely, not completely fixed. This way the guides can be brought forward when placing the screen cover.

1.4 Mounting the V540/V599 L guide

The Ritzscreen® V540 and V599 L is supplied with guides with predrilled mounting holes in the back profile. This occurs in a fixed pattern. At screens with a total height up to 1800 mm, the guides are provided with two holes: 1 hole 100 mm from the top and 1 hole 100 mm from the bottom. At screens with a total height of more than 1800 mm, the guides are provided with three holes: 1 hole 100 mm from the top, 1 hole 100 mm from the bottom and 1 hole in the middle.

1. Place the back profile of the guides against the façade or the window frame as described in paragraph 1.1. Make sure that the guides are perpendicular and equal to the wall. The marking of the drill holes on the wall or the window frame can be made on the base of the holes in the guides.

Outside Mount



inInside Mount

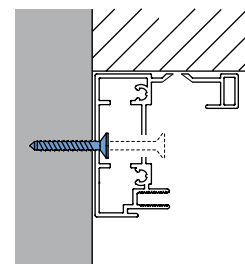


fig. 1.4 Mounting the back guide of the Ritzscreen® V540/V599 L

2. Drill the holes. Mind the size of the screws and plugs that you are going to use. Only use screws with a flat head that can be mounted countersunk when mounting. The surface area needs to be entirely plane.

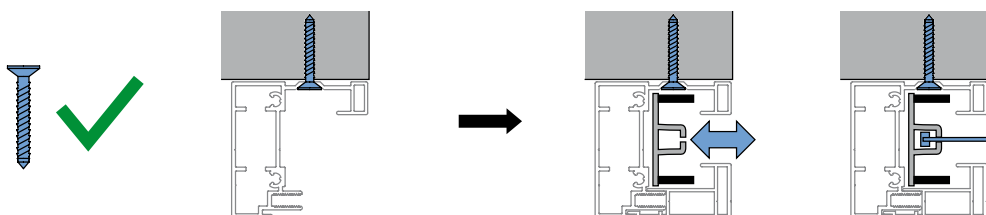


fig. 1.5 Correct mounting of the Ritzscreen® V540/V599 L

Attention! By incorrect mounting or when using the wrong screws, the insert provided with neoprene can not freely move in the guide. When using the screen, the insert or guide is pulled crooked in the profile. This can cause damage to the system. The figure below shows what goes wrong when (a) the screw is not placed far enough in the guide and (b) a screw with a round head is used.

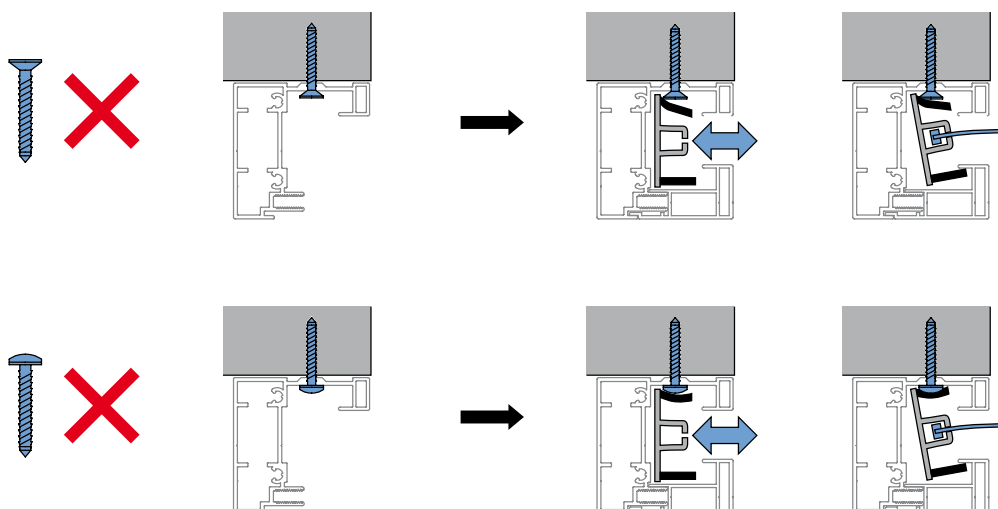


fig. 1.6 Incorrect mounting of the Ritzscreen® V540/V599 L

3. Screw the guides tight. Tighten the top screws loosely, not completely fixed. This way the guides can be brought forward when placing the screen cover.

1.5 Hole for control

1. Accurate mark the inside transit hole for the control cord. This hole needs to be at exactly the same height as the point where the control cord comes out of the screen!
2. Drill the hole for the wall transit with a 10 mm drill.
3. Check before drilling if there are no pipes or other lines in the wall!
4. Always use a shelf on the inside of the house, so that the stucco can not be damaged.

1.6 Placing the screen cover on the guides

1. Lift the cover with two people.
2. Perform the electrical cord through the drilled hole to the inside.
3. Slide the cap supports, that extend under the screen cover, in the back profile of the side guides. Be extra careful while doing this. The cap supports are very vulnerable.
4. Check if the screen cover runs levelled.
5. Screw the top screws fixed in the guides.
6. The cap is now mounted tight enough and fixing is not necessary.

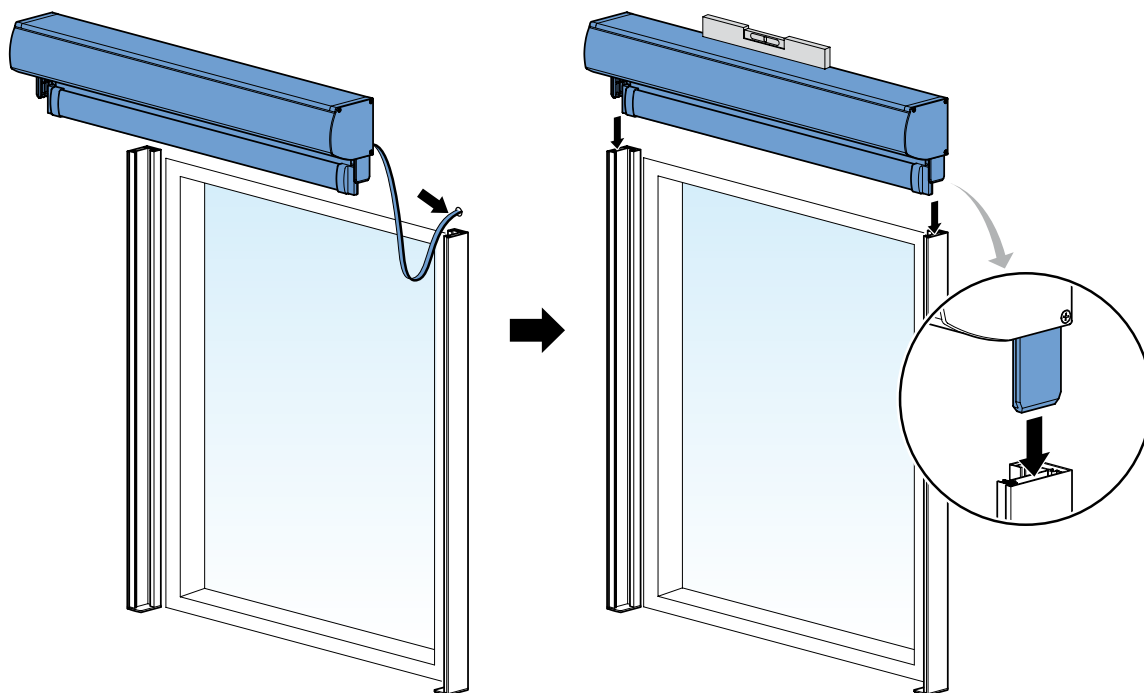
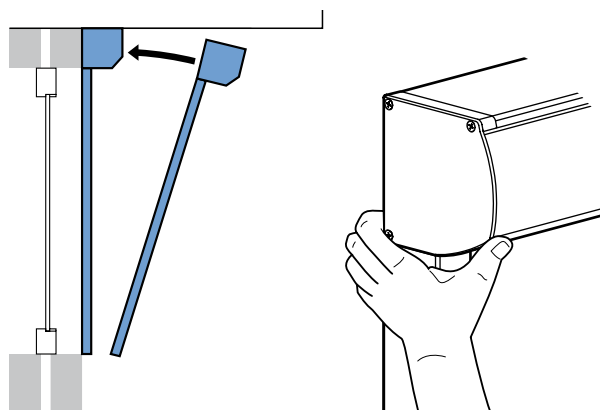


fig. 1.7 Placing the screen cover

Extra attention with a low gutter or roof edge!

When a screen needs to be mounted under a low gutter or roof edge, it is necessary to place the screen cover on the guides before the back guides are being screwed to the wall.

Be extra careful when mounting. The cap supports are very vulnerable! To prevent broken cap supports, always lift the screen with two people at the attachment point of the screen cover to the side guides.



1.7 Sliding the zipper into the guide

1. Place the insert (Ritz guide) (b), with the V-profile up, a little oblique in the back profile (a).
2. Slide the edge of the zipper from the top in the V-profile of the Ritz guide (b). Make sure that it fits well in the gap!
Push the Ritz guide (b) then all the way up into the back profile.
3. Mount the front profile (c) on the back profile (a) with the included screws.
4. The mounting of the screen is now almost finished.

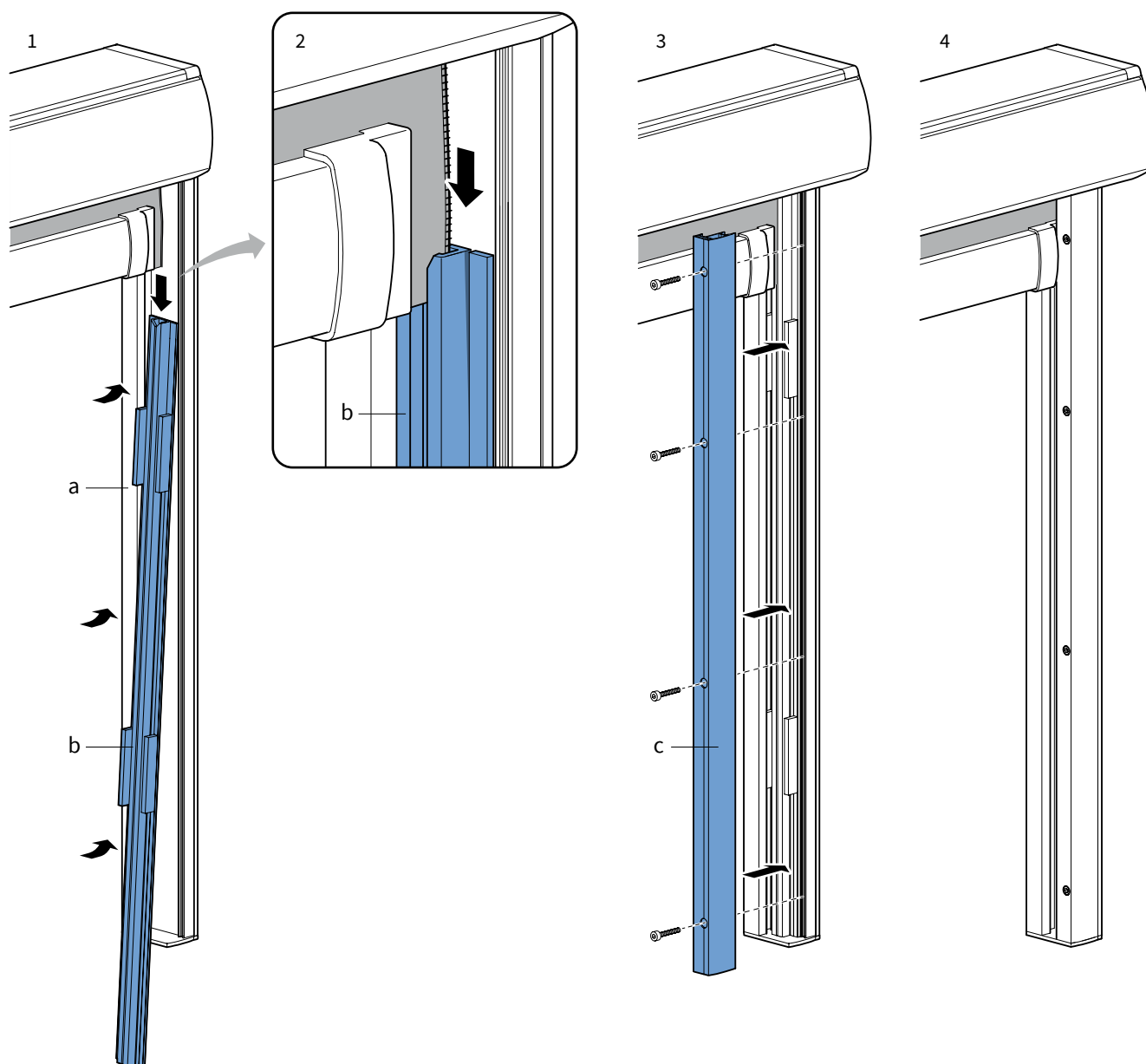


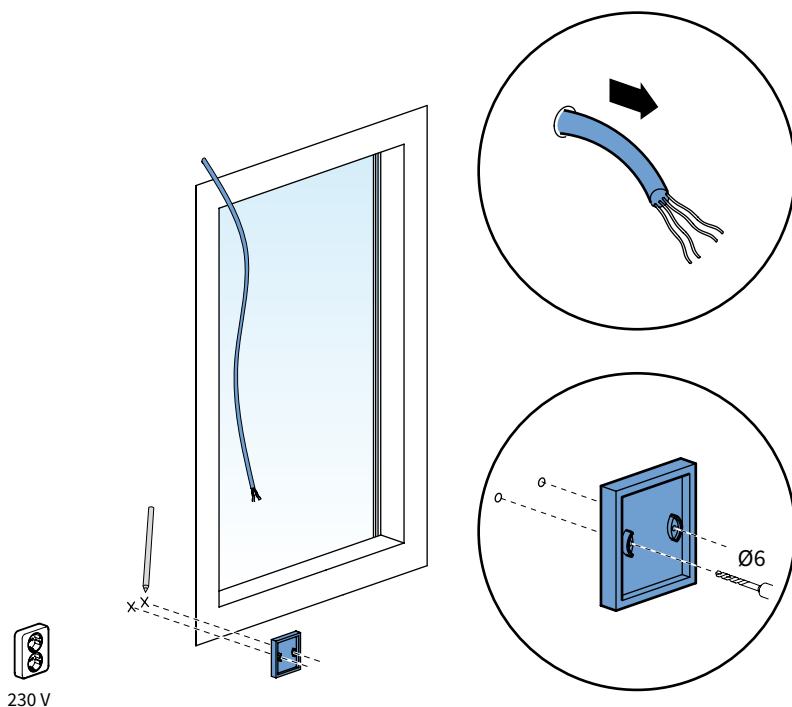
fig. 1.8 Mounting the guide

1.8 Finish outside mounting

Lute the upside and the sides of the cover in order to prevent water from running through the cable to the inside.
The use of transparent lute is advised.

2. Instruction placing the electrical control (inside)

1. Determine the position of the switch inside the house and mark two holes on the wall.

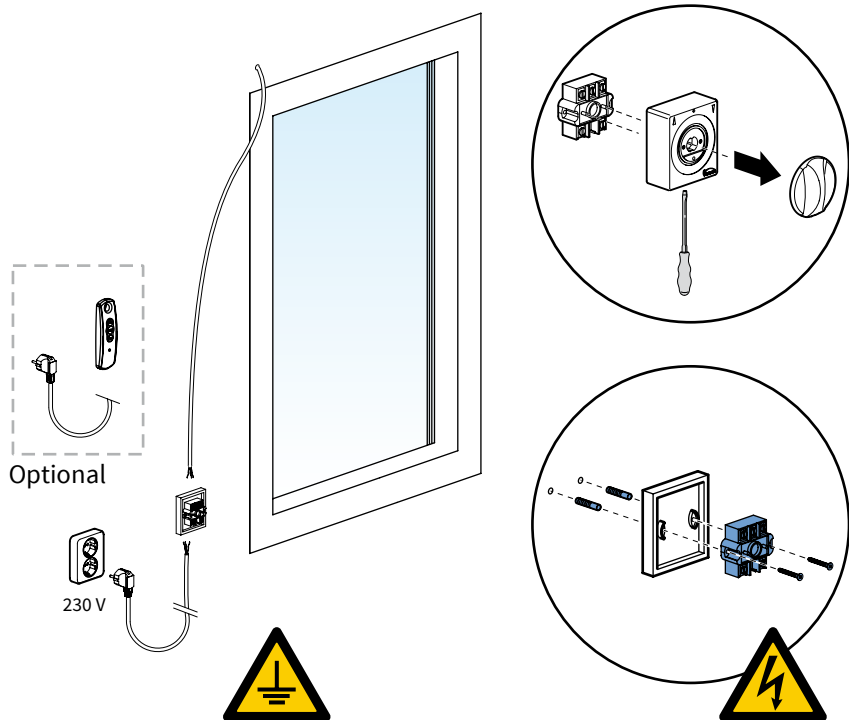


2. Drill the holes with a 6 mm drill.

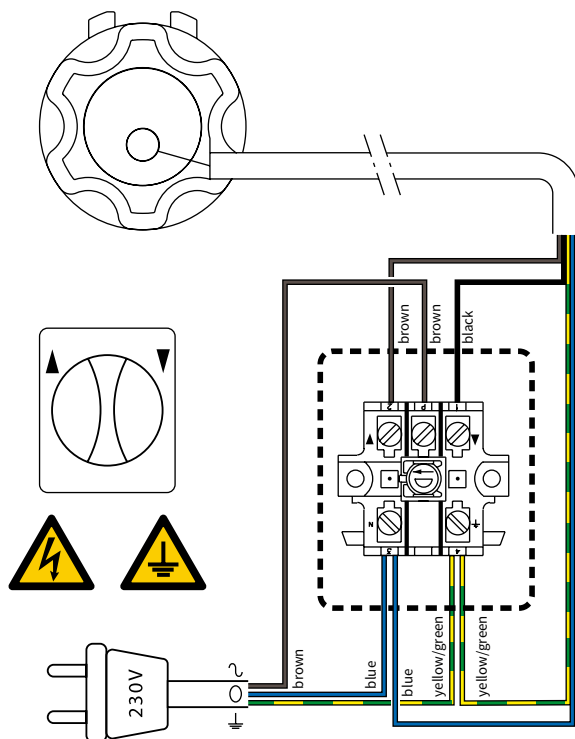
3. Open the switch, using a flat screwdriver.

4. Place the plugs and mount the switch with two countersunk screws.

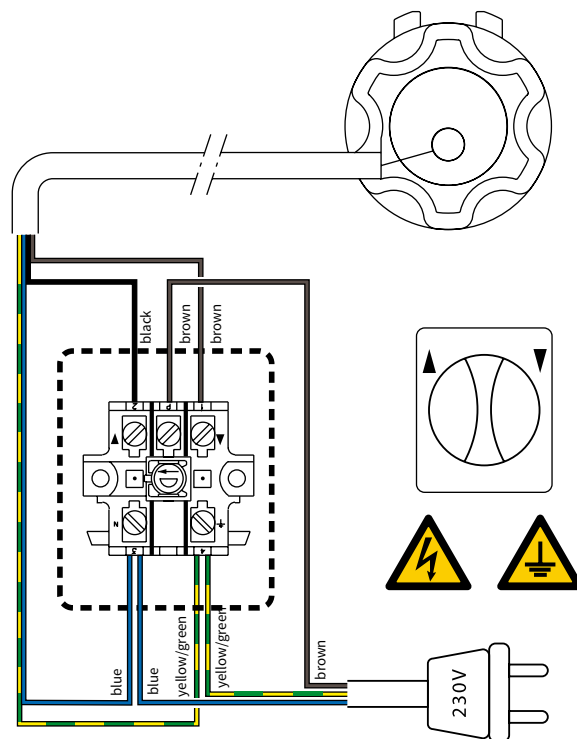
Make sure that the power is off and without tension!



- Connect the 4-wired cord of the motor and the 3-wired cord and plug following the scheme below.
Check an installer when needed.



Motor left (seen from the outside)



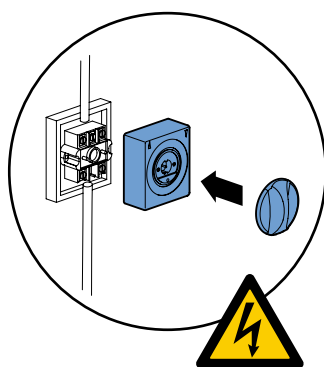
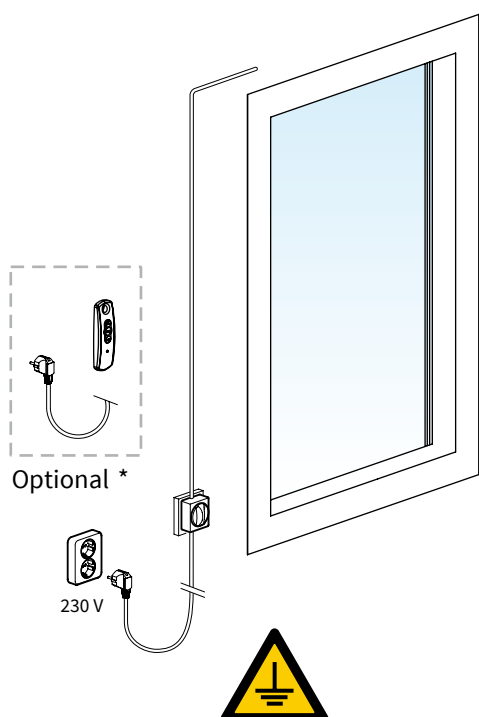
Motor right (seen from the outside)

- Mount the switch.

At a situation with a wireless remote control, the 3-wired cord can directly be connected to the socket.

- Insert the plug into the socket and turn the power on.

The screen is now ready to be controlled.



* View the included SOMFY instruction for setting the remote control.