



## **Installation manual**

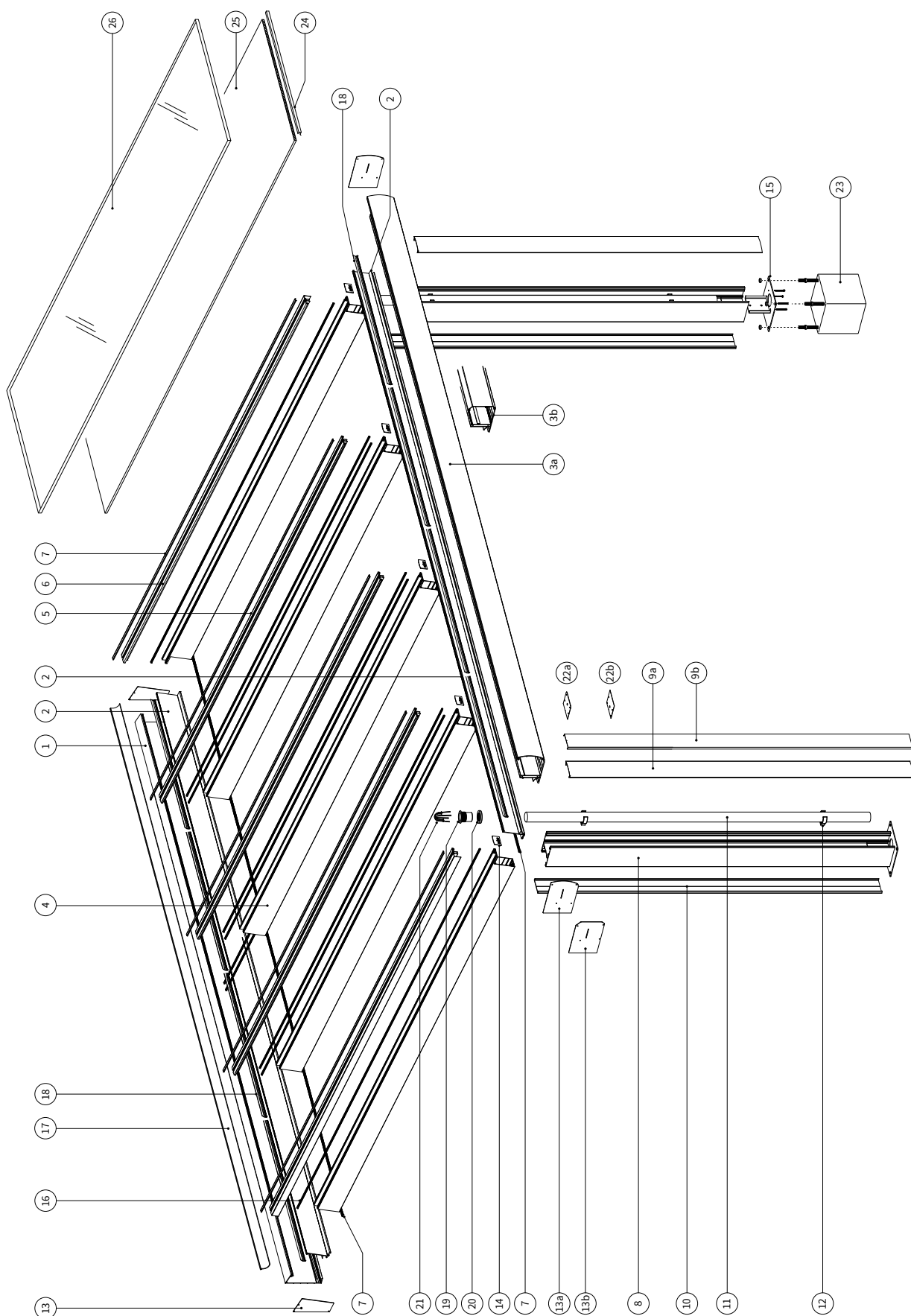
Veranda  
V908 Ledro



## Index

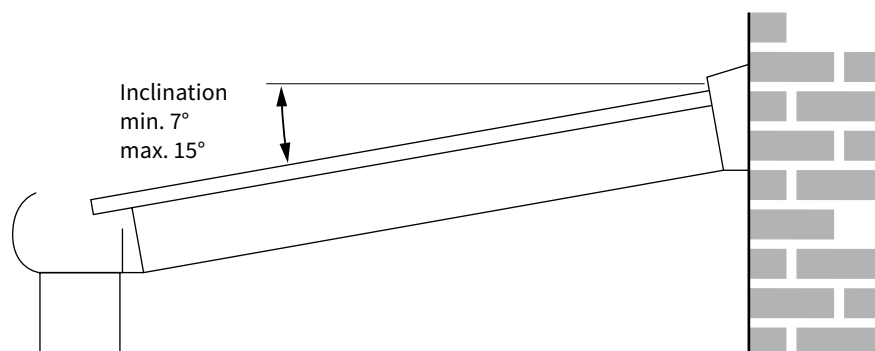
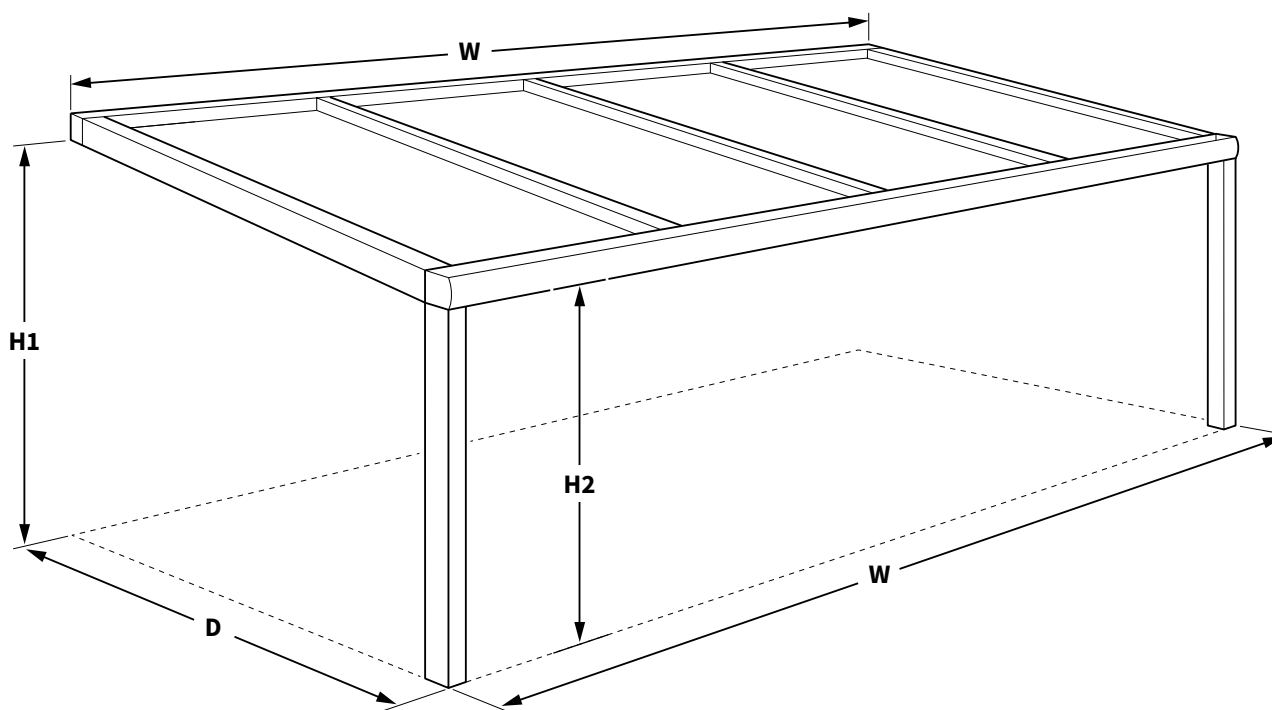
	page
Exploded view	2
Partslist	3
Required tools	4
Important before installation	4
1. Mounting the wall profile	5
2. Preparing the gutter	6
3. Foundation	8
4. Mounting the posts	9
5. Mounting the gutter	10
6. Mounting the beams	11
7. Mounting the glass plates or polycarbonate roof panels	13
8. Finishing	15
Processing the polycarbonate roof panels	17
CE-statement	20
Manufacturers Warranty	22

## Exploded view



## Partslist

- |   |   |
|---|---|
| 1. Wall profile   | 17. Rubber wall profile                                 |
| 2. Tilt profile   | 18. Rubber tilt profile                                 |
| 3. Gutter profile - round (a), straight (b)                         | 19. Fixing for drain-pipe                               |
| 4. Beam   | 20. Fixing for drain-pipe (nut)                         |
| 5. Cover profile beam   | 21. Leave catcher                                       |
| 6. Side profile beam  | 22. Drill template drain-pipe - round (a), straight (b) |
| 7. Click profile covers (beam/tilt profile)                         | 23. Concrete base                                       |
| 8. Post   | 24. Condensation strip for polycarbonate roof panel     |
| 9. Coverplate post, click front - round (a), straight (b)           | 25. Polycarbonate roof panel                            |
| 10. Coverplate post, click back                                     | 26. Glass plate   |
| 11. Drain-pipe Ø 50 mm  |   |
| 12. Clamp drain-pipe  | A Screws and wall plugs (not provided with the roof).   |
| 13. Side covers wall/gutter profile (set) - round (a), straight (b) | B Screw 3.5x19 DIN 7981                                 |
| 14. End cover beam  | C Screw 4.2x45 DIN 7981                                 |
| 15. Base plate  | D Washer E14 5.5  |
| 16. Rubber beam/cover profile beam                                  |   |



## Required tools

- Drilling machine
- Metal drill
- Masonry drill
- Crosshead screwdriver
- Allen key set
- Tape measure
- Level
- Pencil
- Cutting plier
- Flathead screwdriver
- Silicone kit (Acid Free)
- Rubber hammer

## Important before installation

### General warning

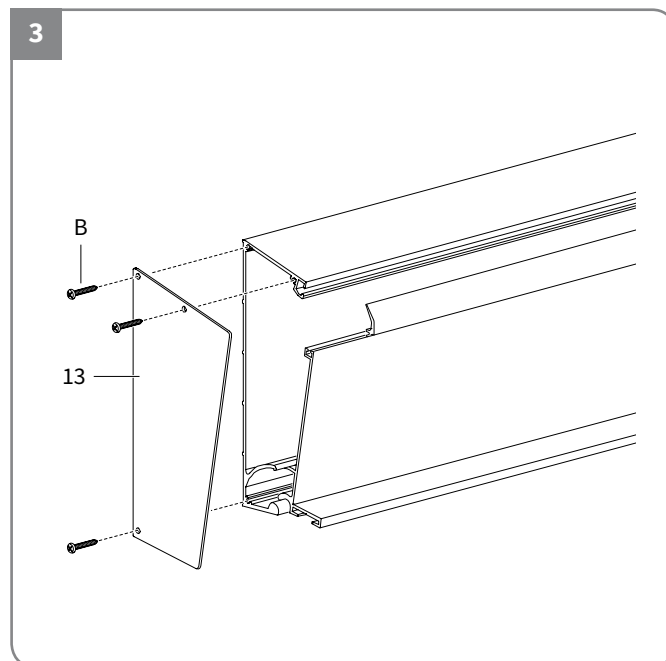
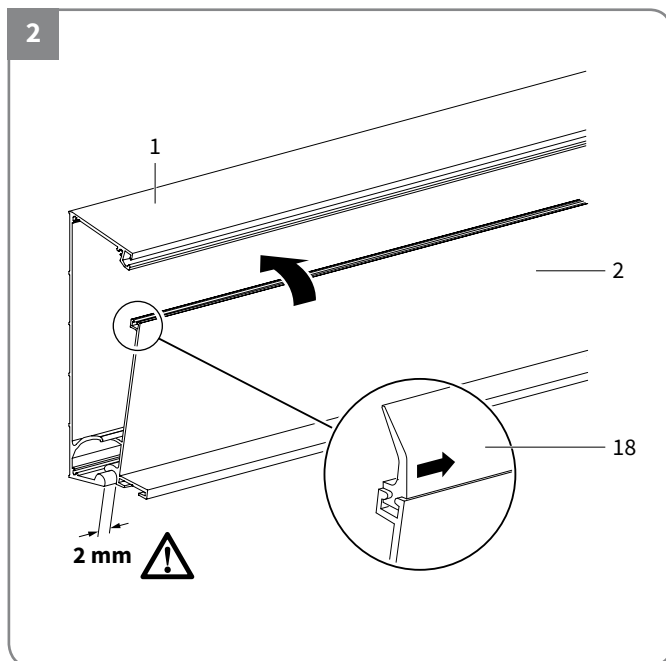
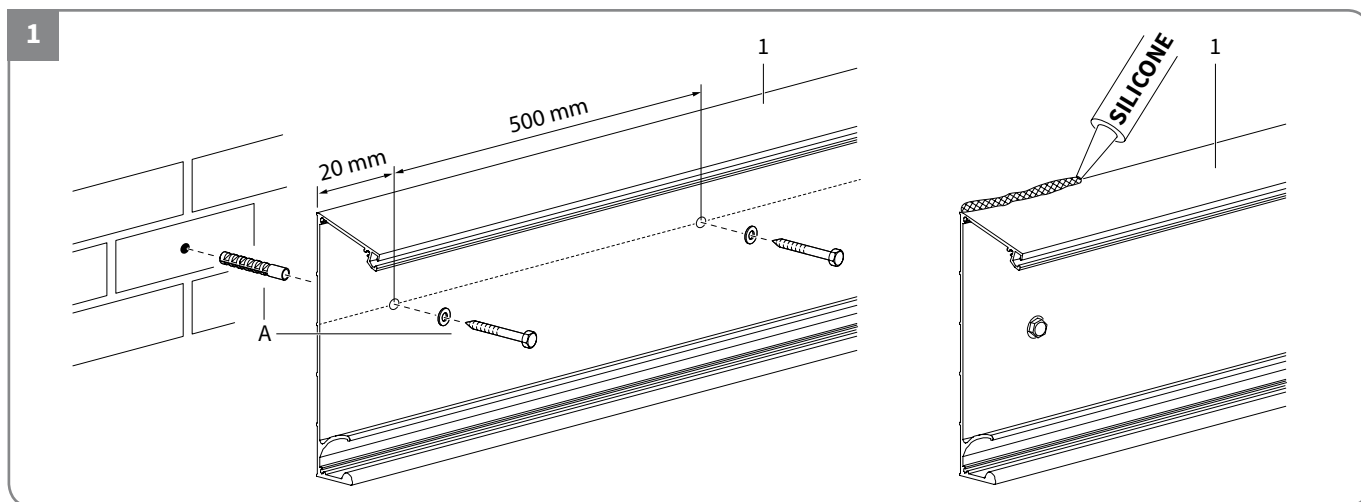
Installing the Verano® product yourself is at your own risk. Only use this instruction as a tool and for the installation of this specific Verano® product. If you cannot install the product yourself, you can always opt for professional installation. The installation team of Verano® is pleased to help you.

### Be careful for damages

Don't use a knife or any other sharp object when opening the packing. This may cause damage to the content of the package. Put the content of the package on a soft surface. Be careful when drilling, falling drill cuttings can cause damages.

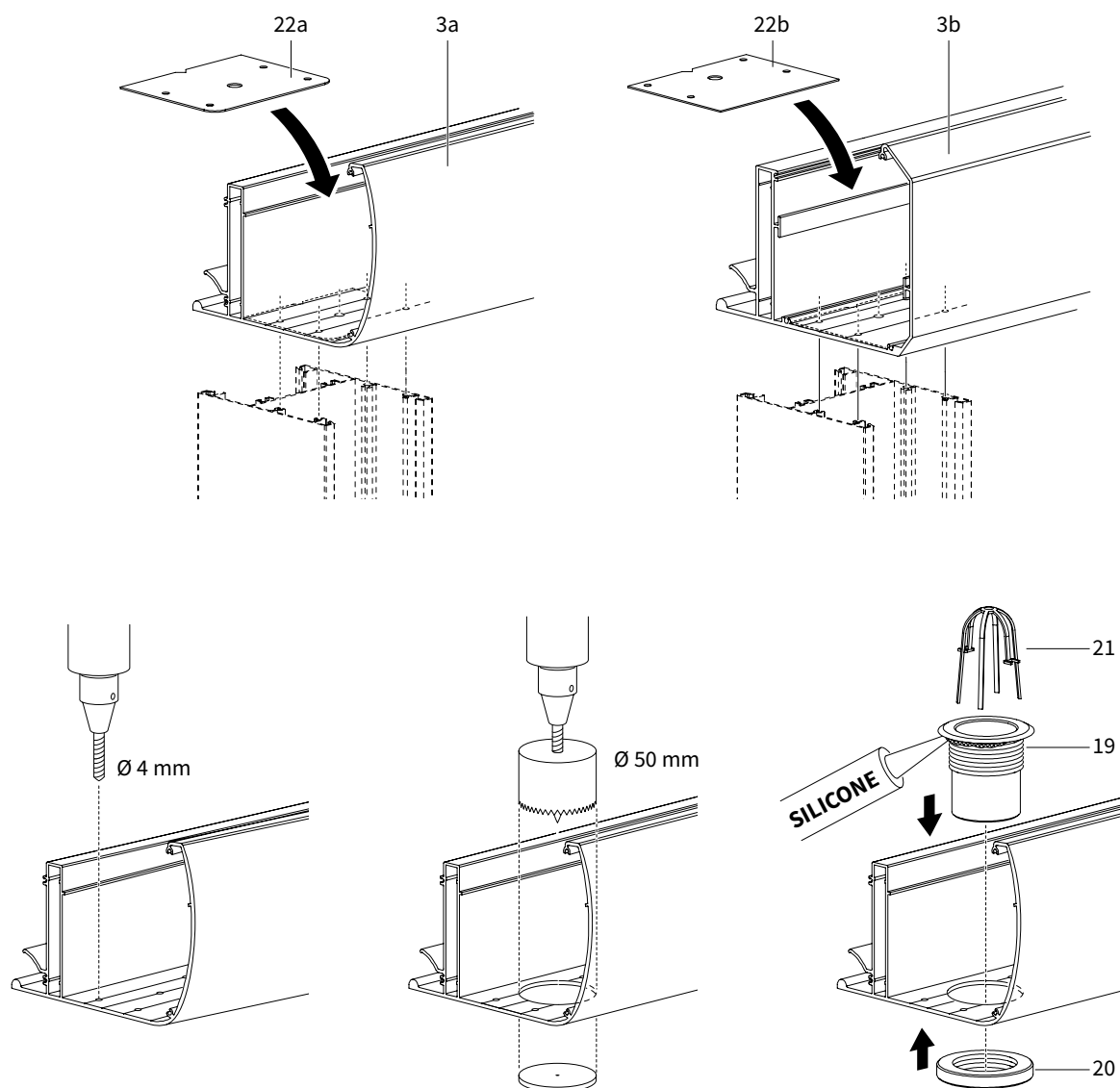
### Check if the façade is flat.

## 1. Mounting the wall profile

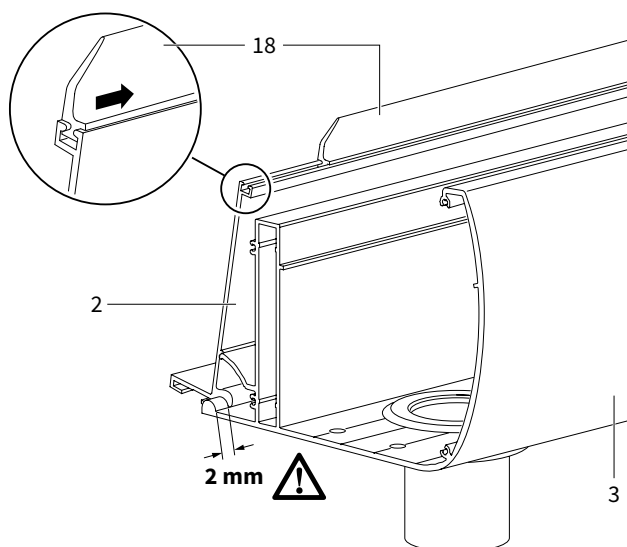


## 2. Preparing the gutter

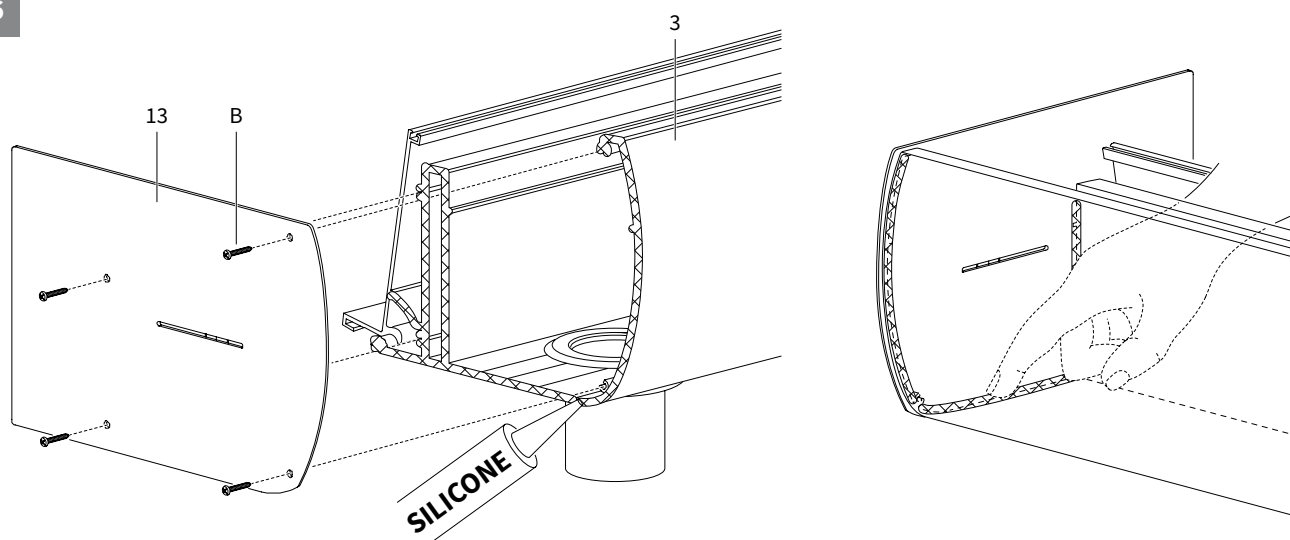
4



5



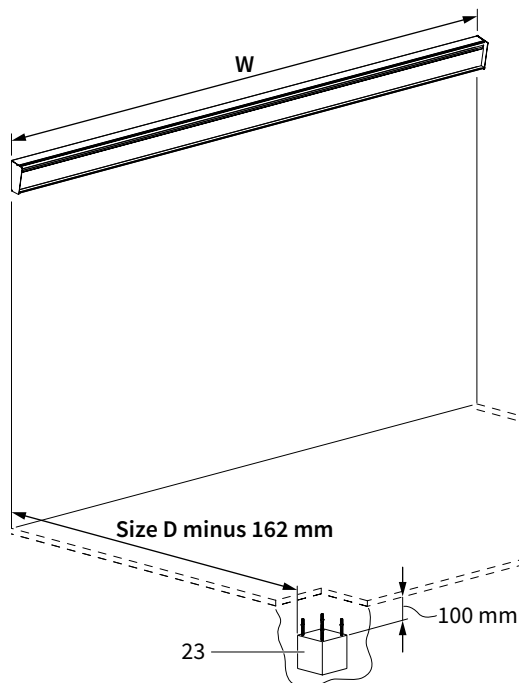
6





## 3. Foundation

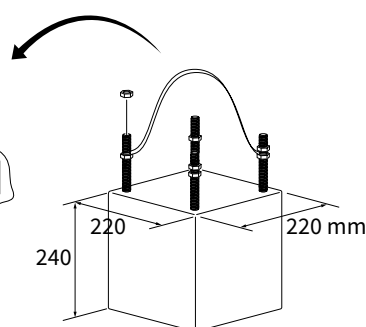
7



**Size W and D** = size on your order form (see figure on page 4)

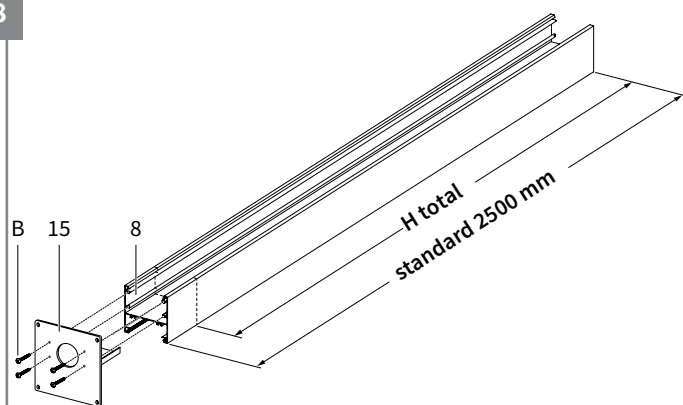
### Attention!

Before the final placement of the concrete bases, you need to mount the posts, gutterprofile and outside beams. Only then you know the specific position of the concrete bases.

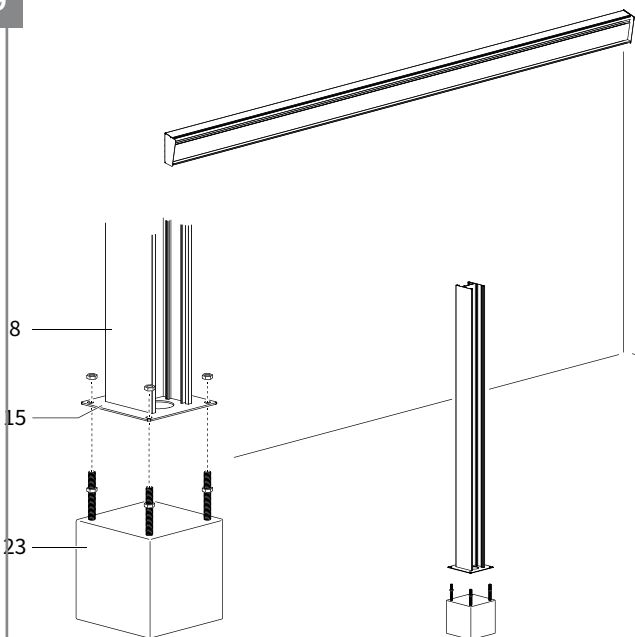


#### 4. Mounting the posts

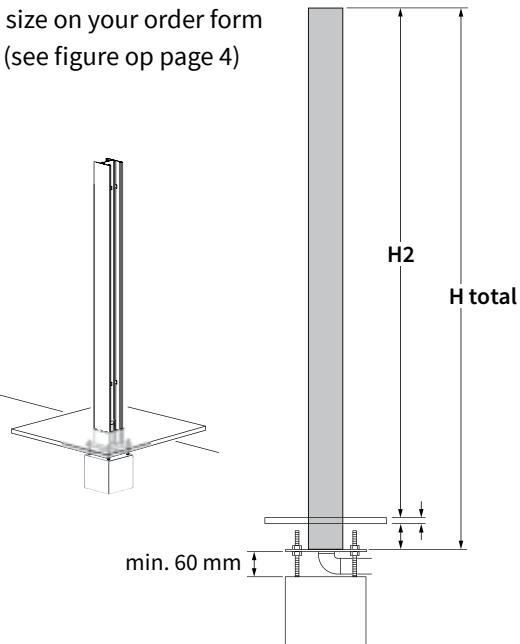
8



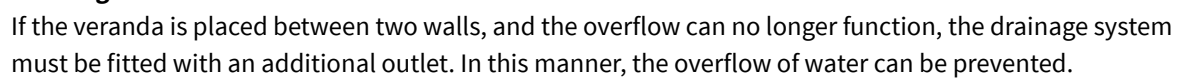
9



**Size H2** = size on your order form  
(see figure on page 4)

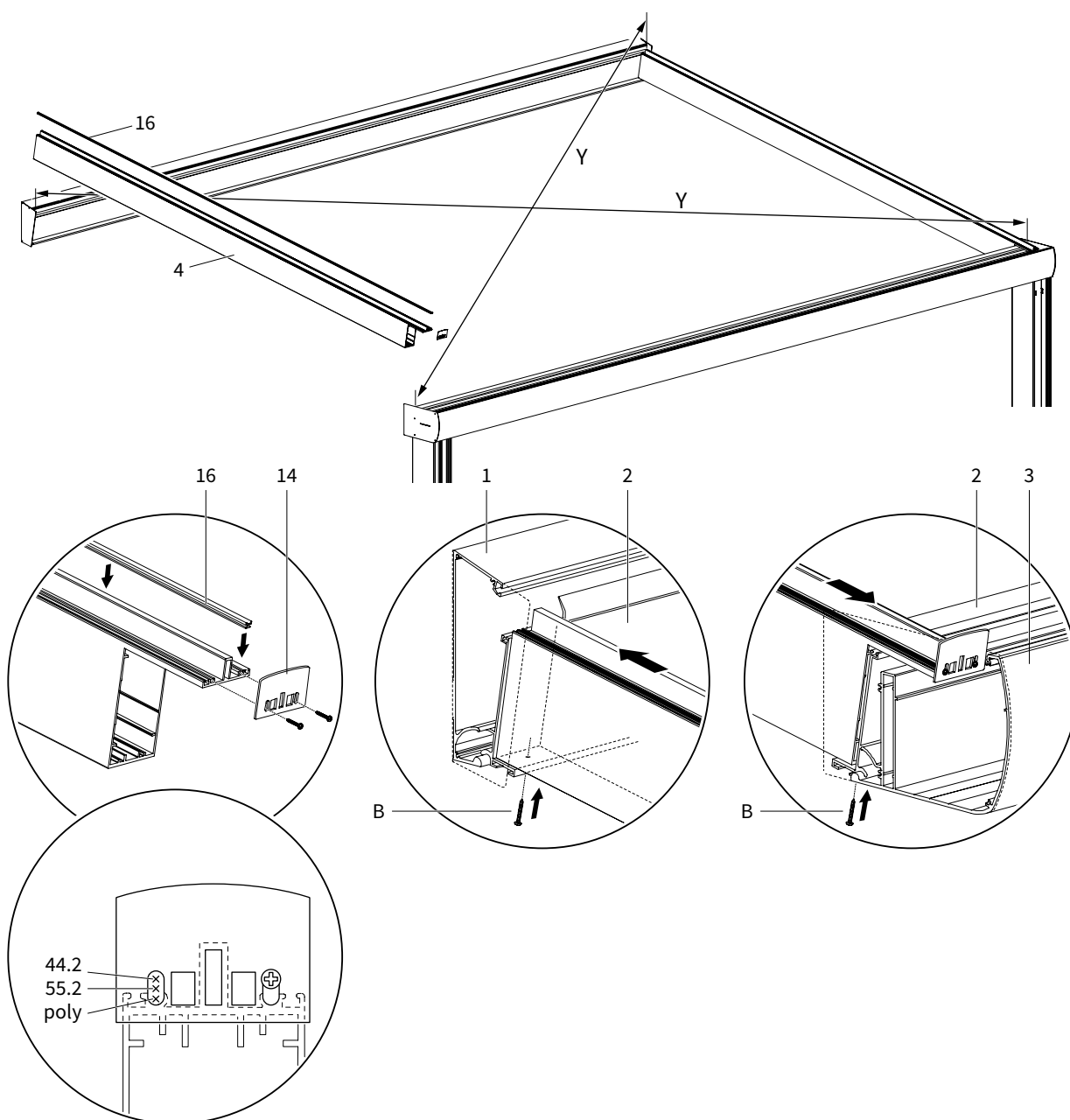


## 10



## 6. Mounting the beams

11



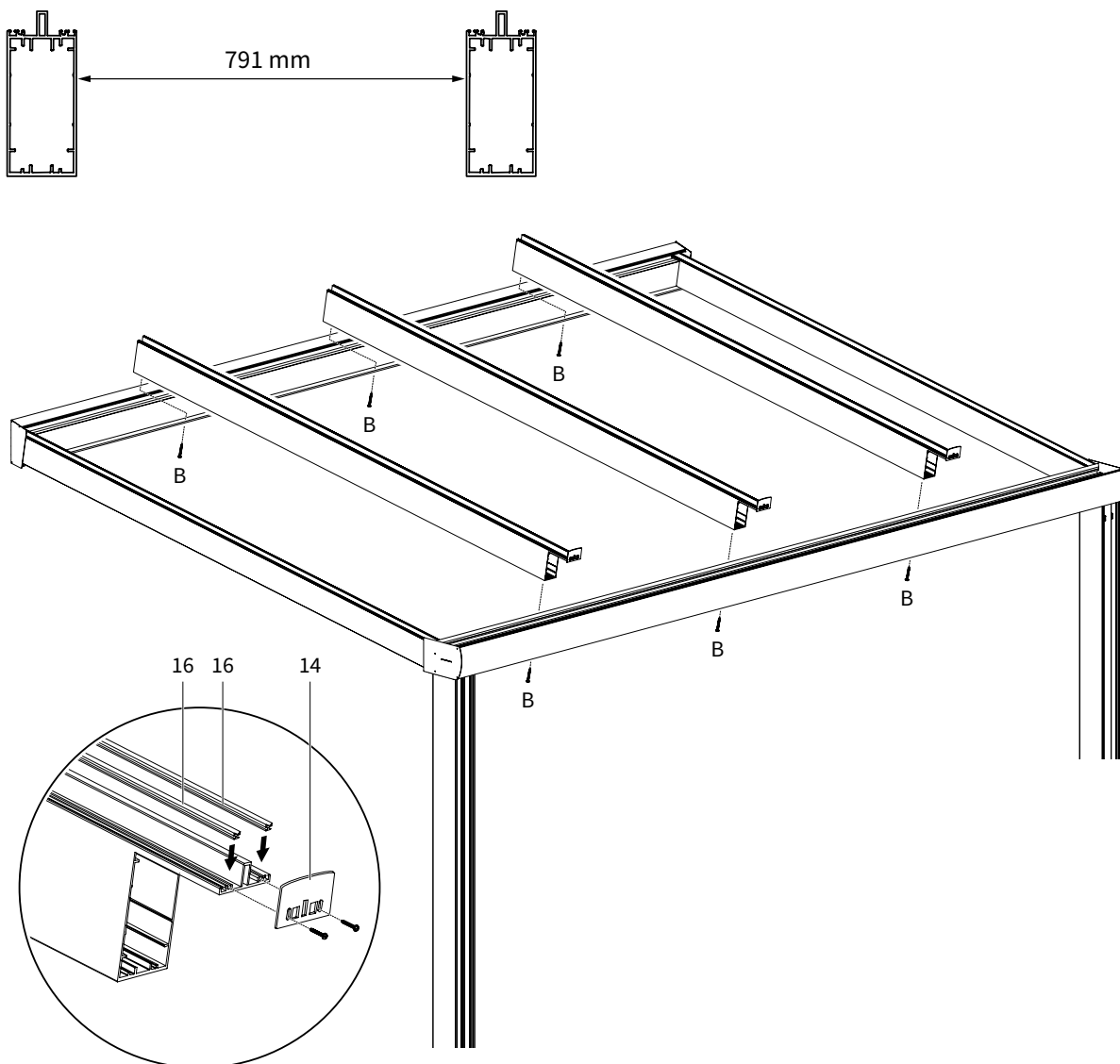
12

## Formula for calculating the distance between the beams

The total width (mm) - 9 mm = ..... - (nr. of beams x 57 mm) = ..... : nr. of roofing panels = space between the beams (mm).

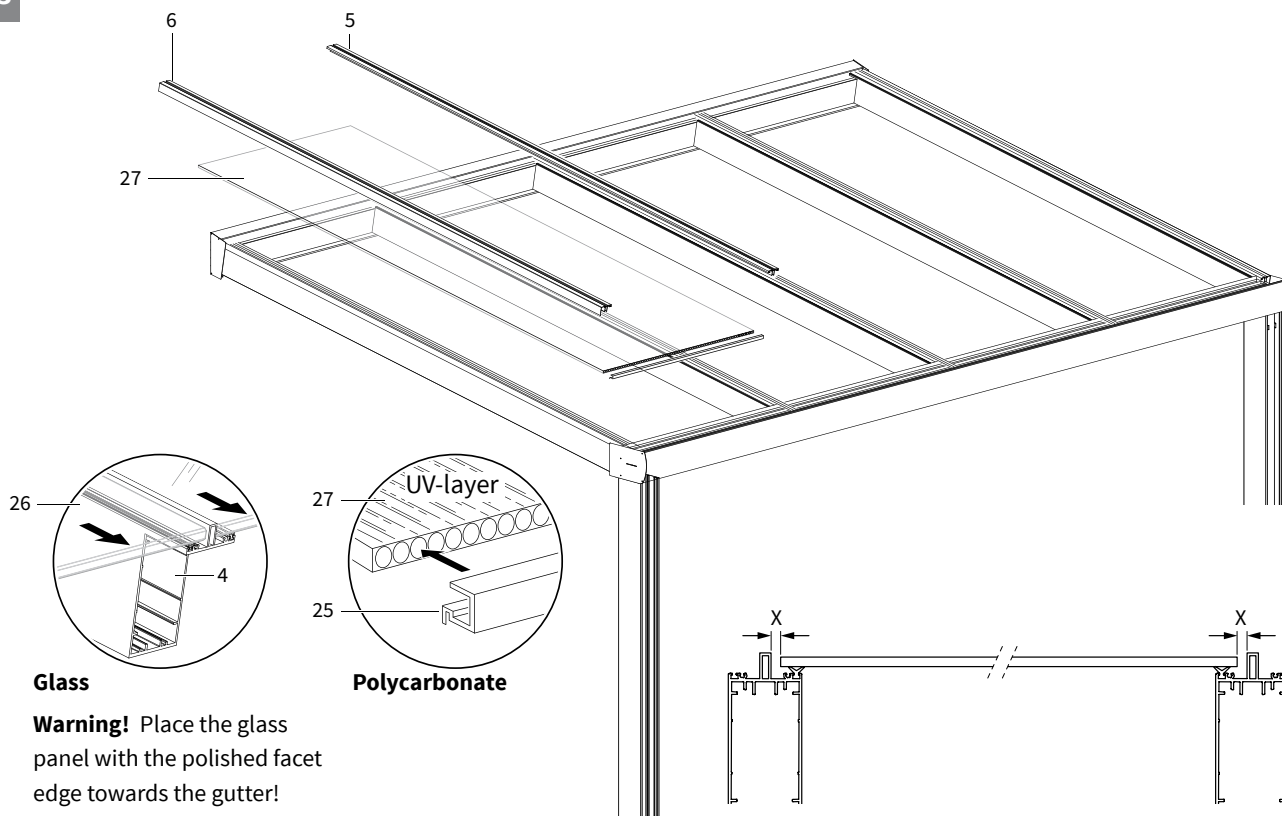
### Warning! This is an example!

6000 mm - 9 = 5991 mm - (8 liggers x 57 mm) 456 = 5535 mm : 7 = 791 mm

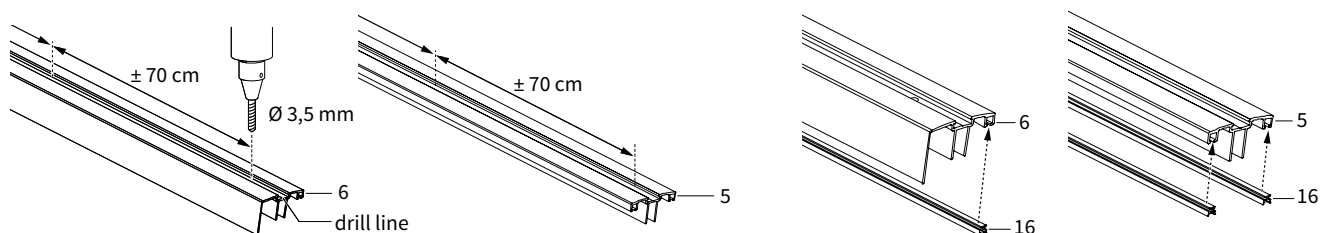


## 7. Mounting the glass plates or polycarbonate roof panels

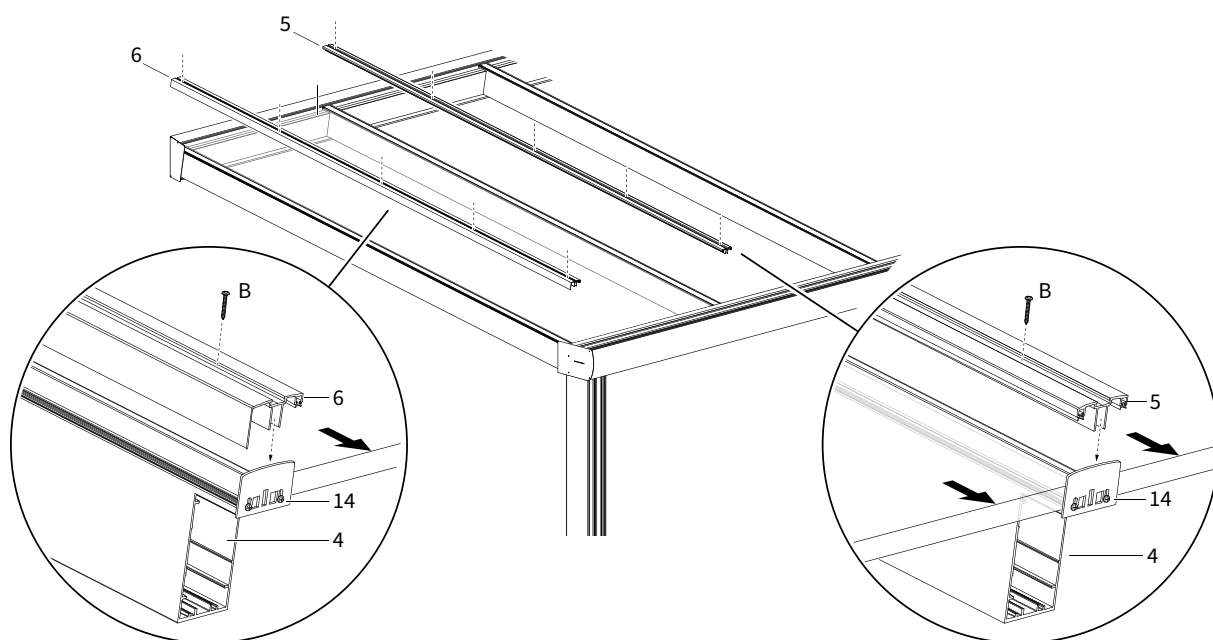
13



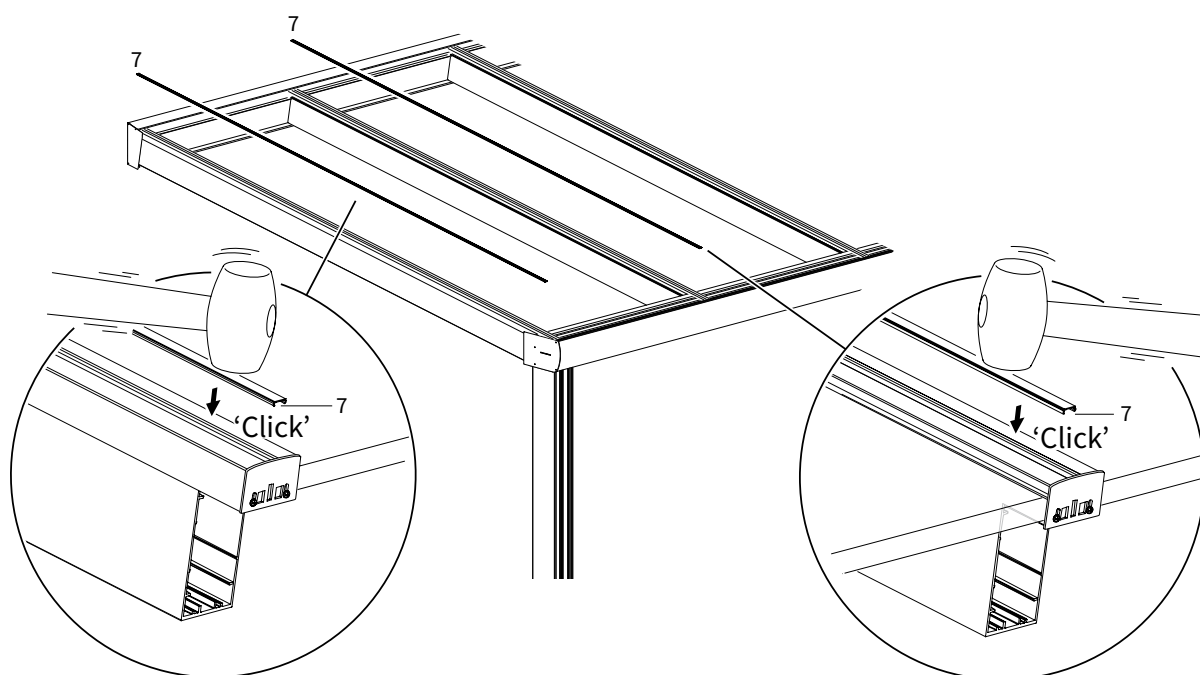
14



15

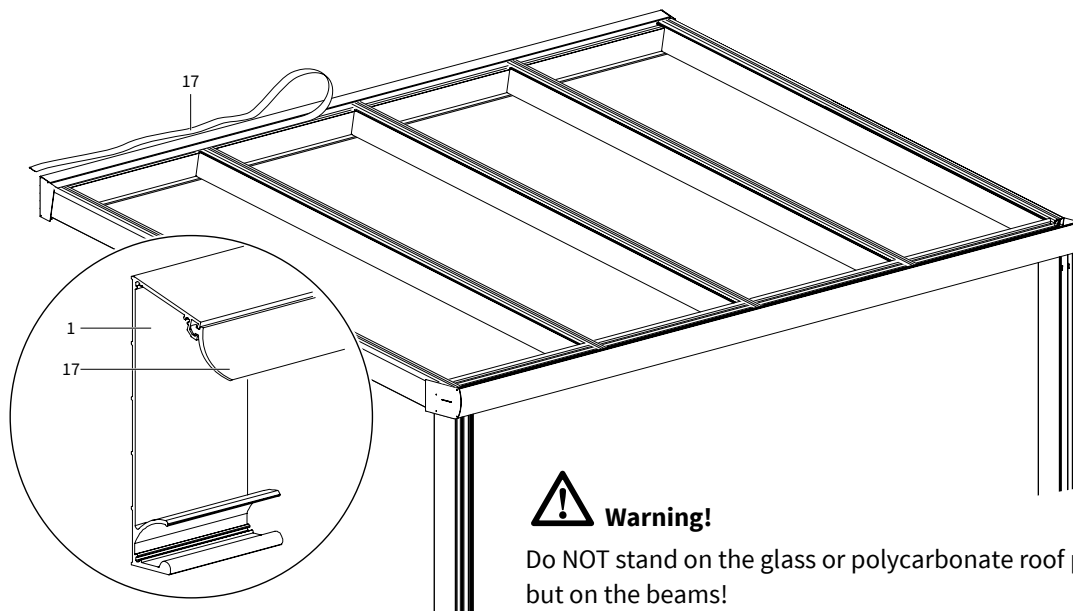


16

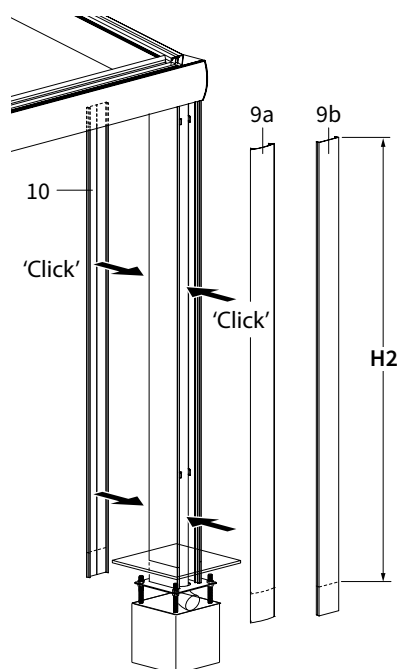


## 8. Finishing

17

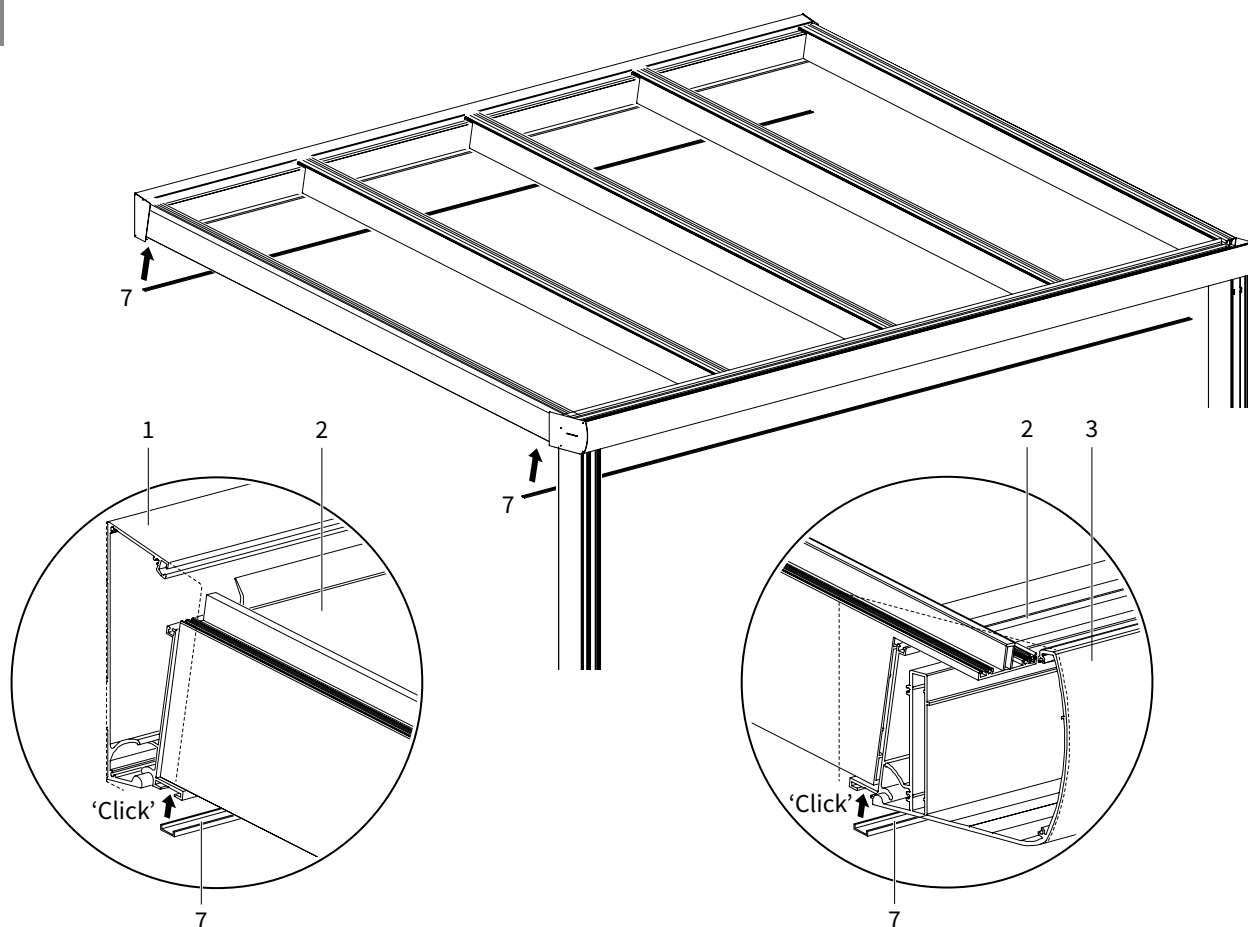


18





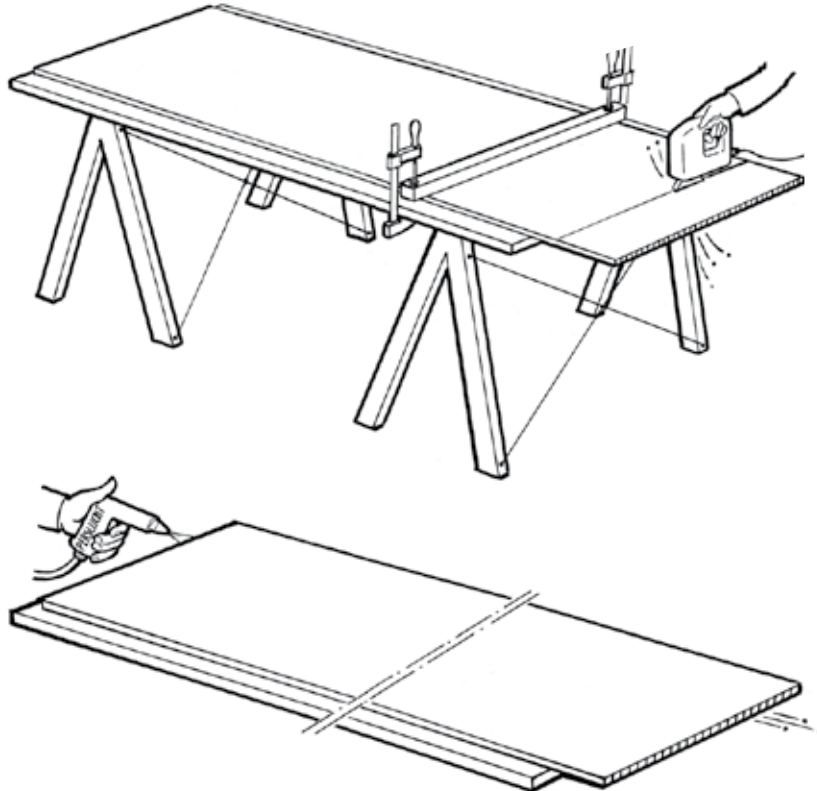
19



## Processing the polycarbonate roof panels

### Storage

If you storage the polycarbonate roof panels, to plates need to lie on a flat surface, for example pallets. The plates may not be stacked directly on the ground. Avoid direct sunlight and rainwater and cover the plates with a white polythene foil. Storage preferably inside. If outside, then under a roof.

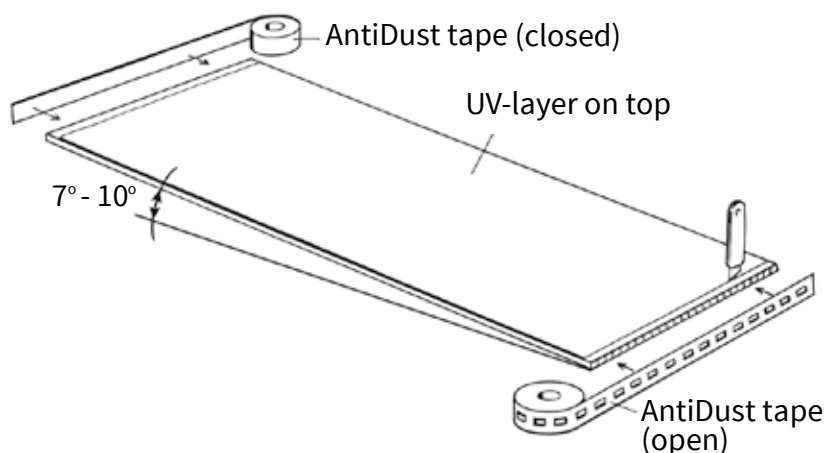


### Sawing

- Saw with a hand circular saw or jig saw with fine-tooth saw blade.  
Use a stable and vibration-free surface and avoid swinging and flapping of the plate.  
Do not remove the protection foil before the sawing and drilling. This prevents scratching on the surface.
- Clean the canals with dry compressed air.
- After that, immediately close with a Anti-dust or transportation tape.

### Backlash and installation

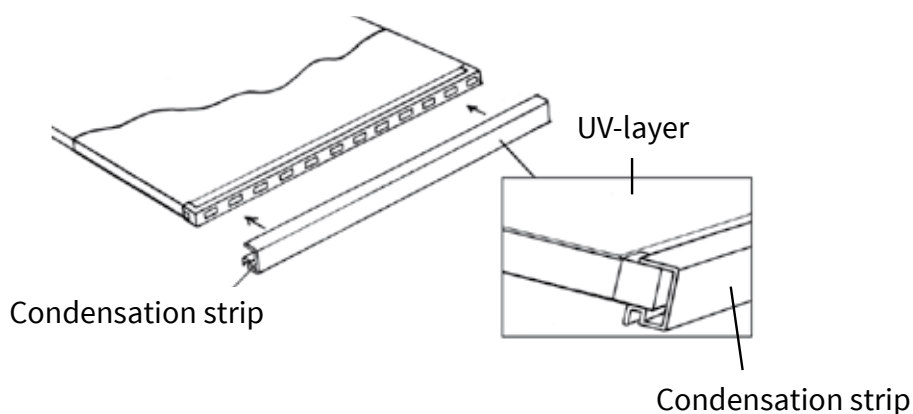
Due to temperature fluctuations, polycarbonate roof panels can bulb or shrink.  
The plate is blocked against shearing on the underside with an end partition on the cover profile.  
The whole backlash needs to be provided on the upper side.  
The side of the plate needs to have a backlash of 3 mm.



## Sealing against moisture

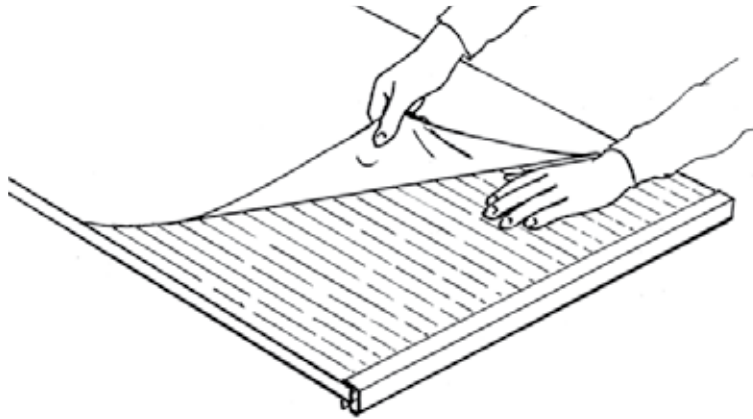
Polycarbonate is gas- and vapor-permeable, this is the reason that moisture can not be quite prevented. A right slope of the roof between 7° – 10° and an effective sealing can limit this.

- The plates need to be taped on the upper side with a closed Anti-dust tape.
- The underside needs to be taped with a perforated AntiDust tape.
- If possible, remove a strip of protection foil below and above (approx. 3 cm).
- Cut lightly with an utility knife.



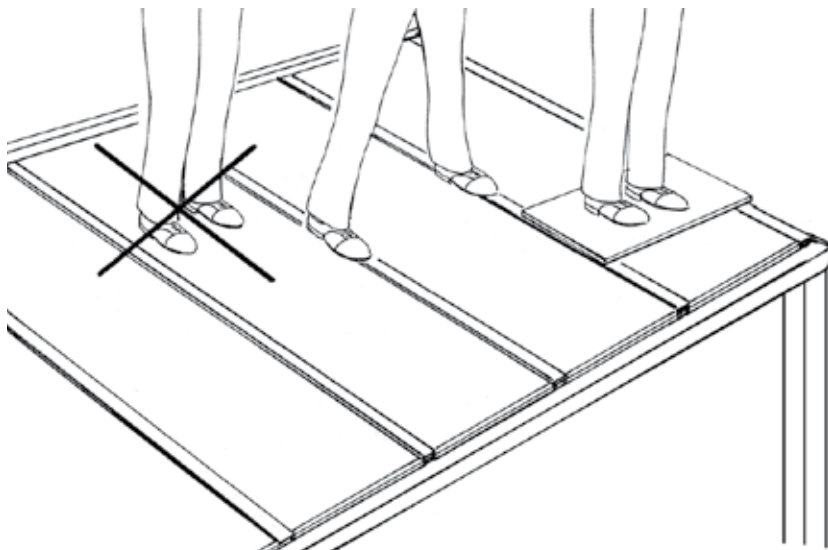
## Placing the moisture profile

After applying the Anti-dust tape, provide the underside of the plate with a condensation strip over the whole width of the plate.



### **Removing the protection foil of the UV-layer**

After applying the moisture profile, the polycarbonate roof panel can be installed. The removing of the UV protection foil can be done after mounting, but also before mounting. It is more easy and more safe to remove it before mounting. You do not need to be on the roof to do this.



### **Do not stand on the polycarbonate roof panel**

The polycarbonate roof panels are solid and strong, but not resisted enough against concentrated load. Do not walk on the panels! Only walk on the edges where beams and cover strips are or use a shelf.

### **Cleaning**

- Clean the polycarbonate roof panels at least once a year with tepid water and soap. If necessary, use non-alkaline soap in combination with a telescopic car brush.
- Use a soft brush or sponge.
- Never use abrasives or solvents!
- Before- and after rinsing with a lot of water and at last clean with a soft cloth.



Registration number TüV The Netherlands QA B.V.: 1231

Verano BV  
Bedrijfsweg 8  
5683 CP Best, Nederland

Certificate number:  
1231-CPR-1090-1-2400-A-293

### EN 1090-1:2009 + A1:2011

Aluminium parts, to be applied in veranda's according to order:  
see sticker on the back of this installation manual

<b>Tolerance on geometric data:</b>	EN 1090-3
<b>Weldability:</b>	N.A.
<b>Fracture toughness:</b>	not for aluminium products
<b>Reaction to fire:</b>	material classification: class A1
<b>Cadmium emissions:</b>	NPD
<b>Radioactive radiation:</b>	NPD
<b>Durability:</b>	surface powder coated according quality class 3
<b><u>Constructive properties:</u></b>	
<b>Deadweight:</b>	design according EN 1990 (Eurocode 1) and EN 1999 (Eurocode 9); reference order noted on sticker on the back of this installation
<b>Distortion in serviceability limit state:</b>	NPD
<b>Fatigue resistance:</b>	NPD
<b>Fire retardend:</b>	Class A1
<b>Fabrication:</b>	according to part specifications; reference order noted on sticker on the back of this installation manual and EN 1090-3, EXC1

## Notes

[illegible]

# MANUFACTURERS WARRANTY

controler no.

date

particulars


## Warranty conditions

The factory warranty is valid only if the assembly has been executed by a certified engineer (professional placement). During the manufacturing of its products, Verano® has used the greatest precision. However, if during the normal use and maintenance within 5 years after the purchase date, there are faults resulting from manufacture or construction errors, provided that all the instructions concerning the correct use and maintenance have been followed, Verano® will put at the dealer's disposal the replacement material, for free.

## Warranty:

- The term is not extended or renewed because of repair or the replacement of faulty parts;
- Does not include the replacement of fuses, limit switches and slide contacts;
- It is Verano®'s obligation to give to the buyer whatever right to compensation or dissolution of the purchase contract;
- Verano® reserves its right, without previous notification, to carry out changes in its products;
- All our transactions occur according to the conditions deposited at the Chamber of Commerce in Eindhoven under number 17119924;
- Small colour changes can occur due to the fact that the ordered colours are manufactured according to the number or that a present steel colour is imitated;
- The paintwork is not resistant to strong chemicals and /or damage with a sharp tool;
- Some colour shade can occur due to the fact that the colours can be more or less effected by UV-radiation (sun light).

## The warranty elapses:

- As a result of insufficient maintenance or incorrect use;
- The sun blind is not fitted by a certified engineer;
- Normal wear resulting from use;
- Discoloration due to effects of weather;
- Faulty assembly.

The second party does not derive a right from the warranty other than the one above mentioned, especially the right to compensation in case of consequential loss and also due to faults of third parties. Also consequential damage will not be compensated. The second party indemnifies us against all the consequences of the other claims of his customers.

# MANUFACTURERS WARRANTY

REGISTER YOUR PRODUCT ON VERANO.EU AND RECEIVE A 5 YEAR WARRANTY

Congratulations on your purchase of this Verano® product. You are ensured of many years of pleasure during the normal use of the product according to the appropriate operation and maintenance rules. All the materials used are adjusted to the user's objectives. The products are manufactured with the greatest care. If you have any comments, please send an e-mail to: **info@verano.nl**. We hope you enjoy your Verano® product!

Verano® retailer data:

# CE Sticker

More inspiration? Follow Verano®!



facebook.com/verano.nl



@veranobv



pinterest.com/veranobv



plus.google.com/u/0/+VeranoNl190



linkedin.com/company/verano-b.v.



www.verano.eu

Exteriorsun protection  
Roller shutters  
Outdoor living  
Interior sun protection  
Garage doors

