

INSTALLATION MANUAL
WINDSCREEN V745 - LÜDERITZ

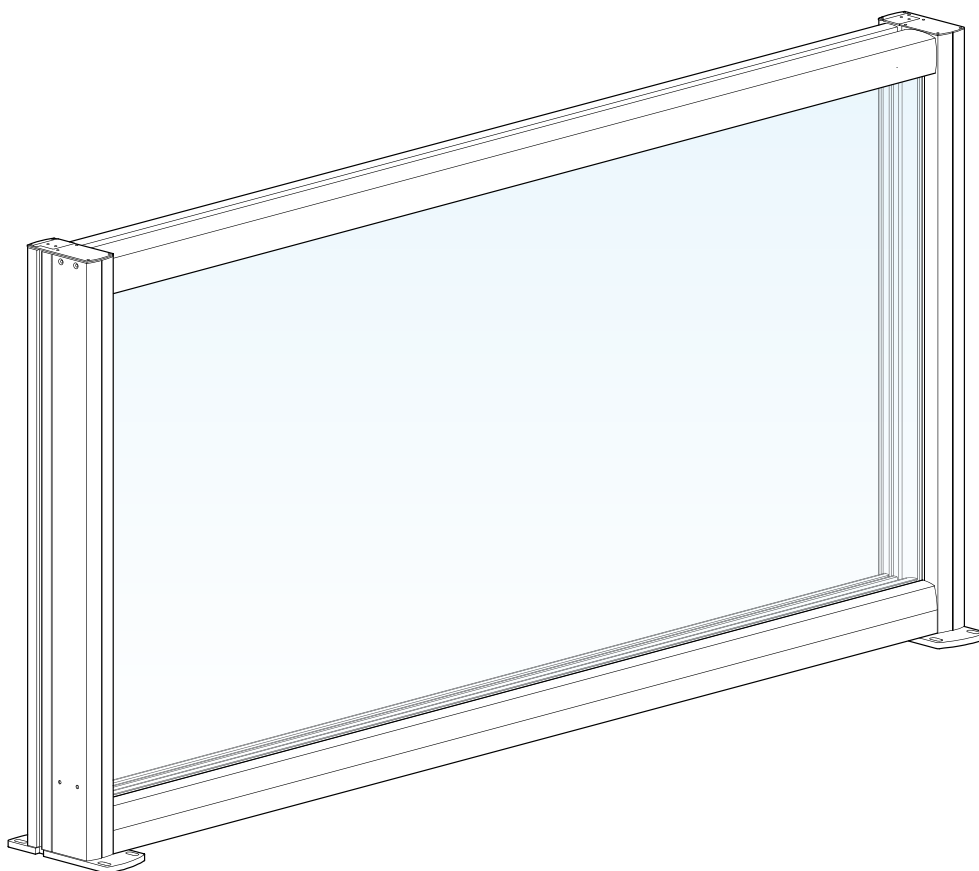
Index

	page
Content package	2
Required tools	2
Important before mounting	3
1. Installation footplate	4
2. Installation recessed footplate	5
3. Linking windscreens	6
4. Ongoing vertical upright	7
5. Linking to a wall	8
6. Measurements of different alignment possibilities	9
7. Specifications feet	13
8. Installation on balcony	17
9. Guiding strip (optional)	18
10. Connect operation	19
11. Maintenance	20
12. Check final adjustment of the motor	21
13. Final adjustment of the motor	22

Lüderitz basic windscreen

Standard including:

- Clear glass 5mm, hardened (top and bottom)
- Standard footplates
- Covering caps
- Electrically controlled (Somfy LT50 motor with switch)



Required tools

- Drill
- Masonry drill 14 mm (depending on installation)
- Open end wrench or ratchet 17
- Head screwdriver
- Allen key set
- Tape measure
- Level
- Pencil
- Silicone spray
- Installation instruction

Important before installation

General warning

Installation of this product is at your own risk. Use this installation instruction only as an assistance and only with the installation of this specific product. If you can not install this product yourself, you can always opt for professional installation. Your dealer's installation team is always ready to assist you.

Please be aware of damages

Do not use a knife or any other sharp object while opening the packaging. The product could get damaged. Place the product on a soft surface. Please take care while drilling. Drilling waste may cause damages.

Check the (installation) surface

For installing the Lüderitz windscreen, the surface must meet certain requirements:

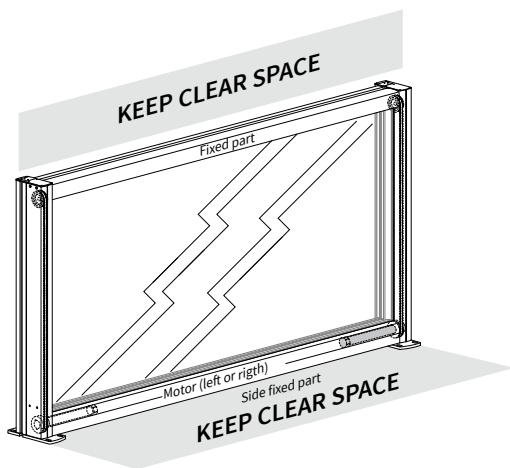
- The windscreen may only be installed on a solid surface.
- Note if there are no protruding parts or other obstacles in the way.
- For the installment of the windscreen, it is important that the surface is horizontal level.
- If the floor is not level, you can opt for extended uprights that are sunk into the bottom of the surface.



Warning!

Keep clear the space at the top and the side of the fixed part for maintenance (see page 17).

Take possible future service- and maintenance proceedings into account during the placement of the windscreen or wind-screens. This product is provided with a motor. The motor is installed on the left- or right side in the bottom profile of the fixed part. Make sure that the motor can be replaced if any defects occur.



- Make sure that the fixed part can easily be reached and is demountable for maintenance of the motor.
- Keep the top of the windscreen clear.
- Do not install anything on the covering plates.
- Make sure that the motor cable lies free above the installation surface. The cable can not be poured in concrete.

The Lüderitz is not suitable as a balustrade!

A balustrade is a low fence or wall that with a difference in height, people, who are located on the high side, helps to protect against falling. A balustrade is obliged with a height difference of 1 meter.

The Lüderitz windscreen should never be used as a substitute for a balustrade. It must only be placed against a balustrade, on the high side!

With a height difference of 1 meter or more, the windscreen should be implemented with layered safety glass.

Never clamp in between two walls!

The Lüderitz windscreen should never be clamped in between two walls. Clamping the windscreen can damage the windscreen or impede its operation. You should leave at least 1mm space, both at the right as at the left side.

1. Installation footplate

The Lüderitz windscreen should always be mounted onto a concrete surface. This must be done by installation the footplates with lag screws.

Follow steps below for installation:

1. Drop the windscreen, if necessary, completely.
2. Place the windscreen in the required position and check if it's completely level, horizontally as well as vertically.
3. Drill the holes in the concrete with a 14 mm drill.
4. Place the plugs.
5. Install the windscreen firmly with lag screws.

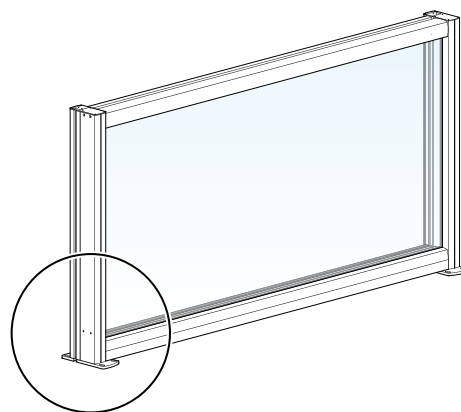


Figure 1.1 location footplate

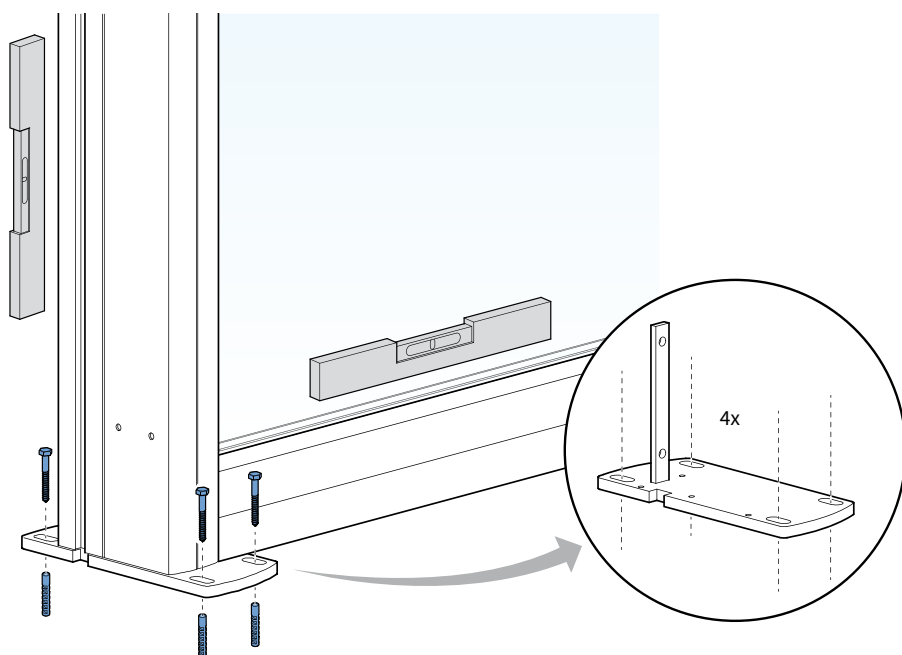


Figure 1.2 Screwing footplate

Instead of lag screws you can also use wedge bolts for the installation of the footplates.

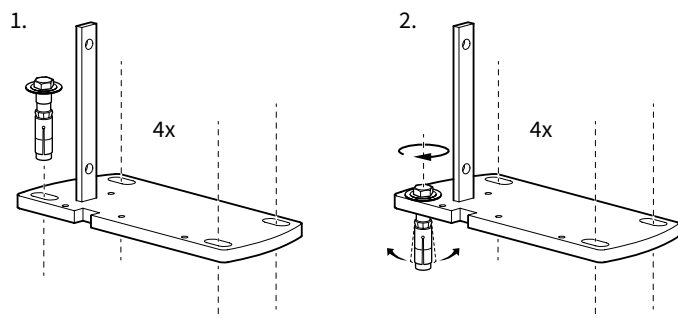


Figure 1.3 Installation with wedge bolt

2. Installation recessed footplate

If you have a terrace with sloping pavement, you must install the windscreen recessed. The uprights of the Lüderitz can be extended at the bottom with a required amount (x) of millimeters. In this way height differences in the subsurface can be catered. You should make this choice in advance, when ordering the product. Adjusting the uprights afterwards is not possible. Important is that the windscreen remains level.

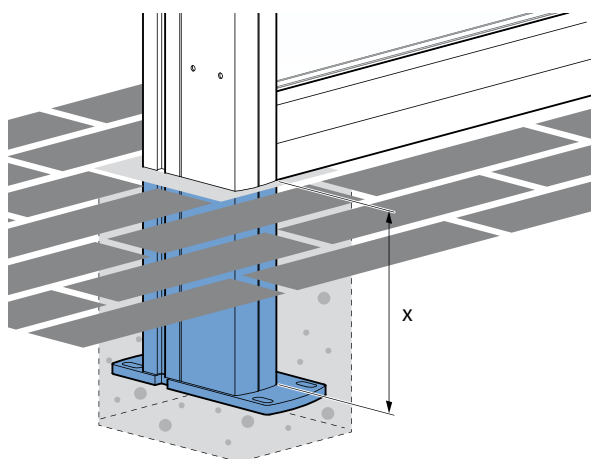
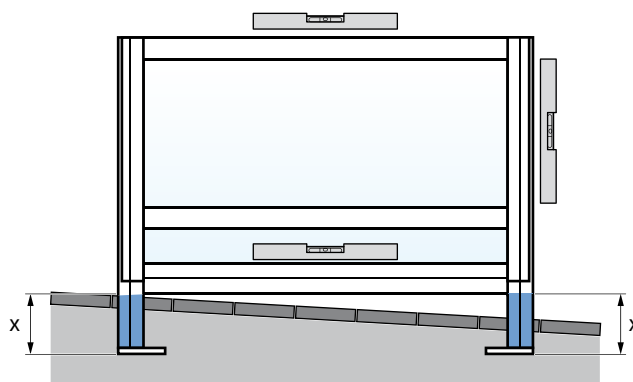


Figure 2.1 Recessed footplate



Front view

Pavement

With recessed installation the footplate is not visible. Pavement can be applied around the uprights.

Warning!

Make sure the paving beneath the sliding part is not too high! When the sliding part of the windscreen is completely down, the bottom side of the vertical part may not hit the pavement.

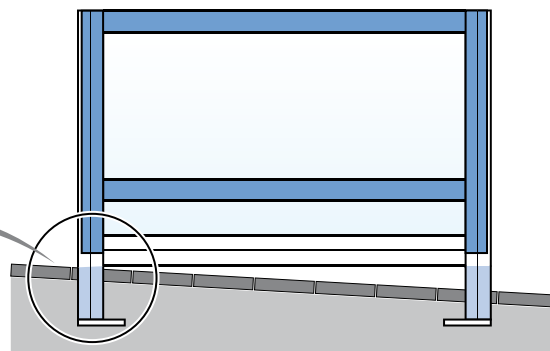
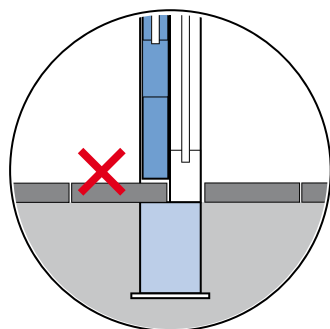
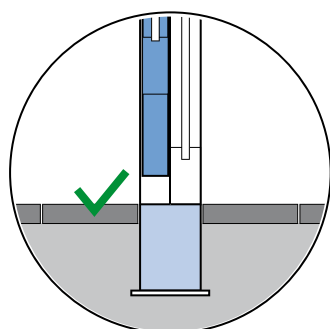
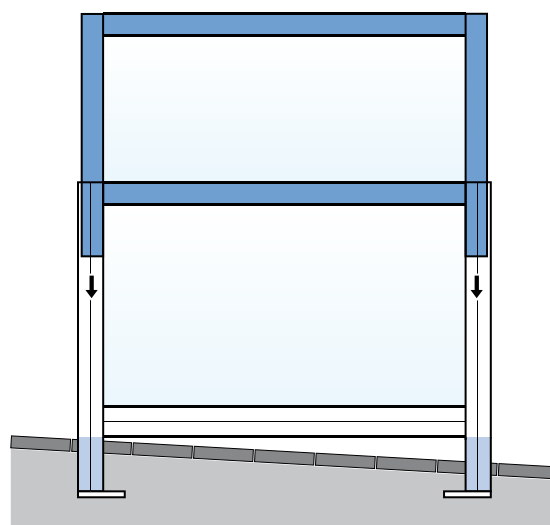


Figure 2.2 Installation pavement around recessed footplate

Side view

Front view

3. Linking windscreens

It is possible to link multiple windscreens. In this way you can make your barrier as long as you like.

The Lüderitz windscreen can be linked blind. You should mount the coupling as high as possible in the fixed part. See figure 3.1.

Follow steps below for installation:

1. Drop the windscreen, if necessary, completely.
2. Remove the covering plates at the topside of the uprights.
3. Slide block (a) into the slot of the upright which you want to link.
4. Tighten the coupling block circa 50 mm from the edge.
5. Place the windscreens which you want to link against each other.
6. Slide coupling block (b) into the slot of both windscreens.
The windscreens are now linked.
7. Fix the covering caps to the topside of the uprights.

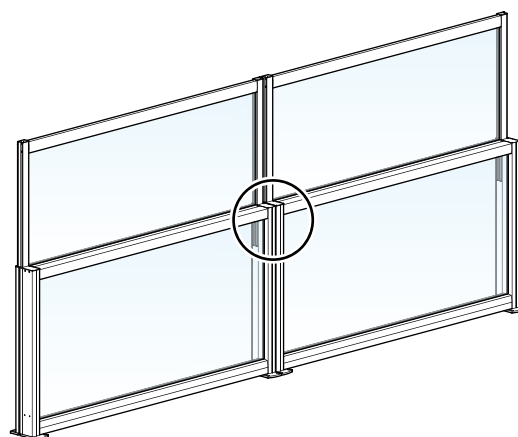


Figure 3.1 Location link

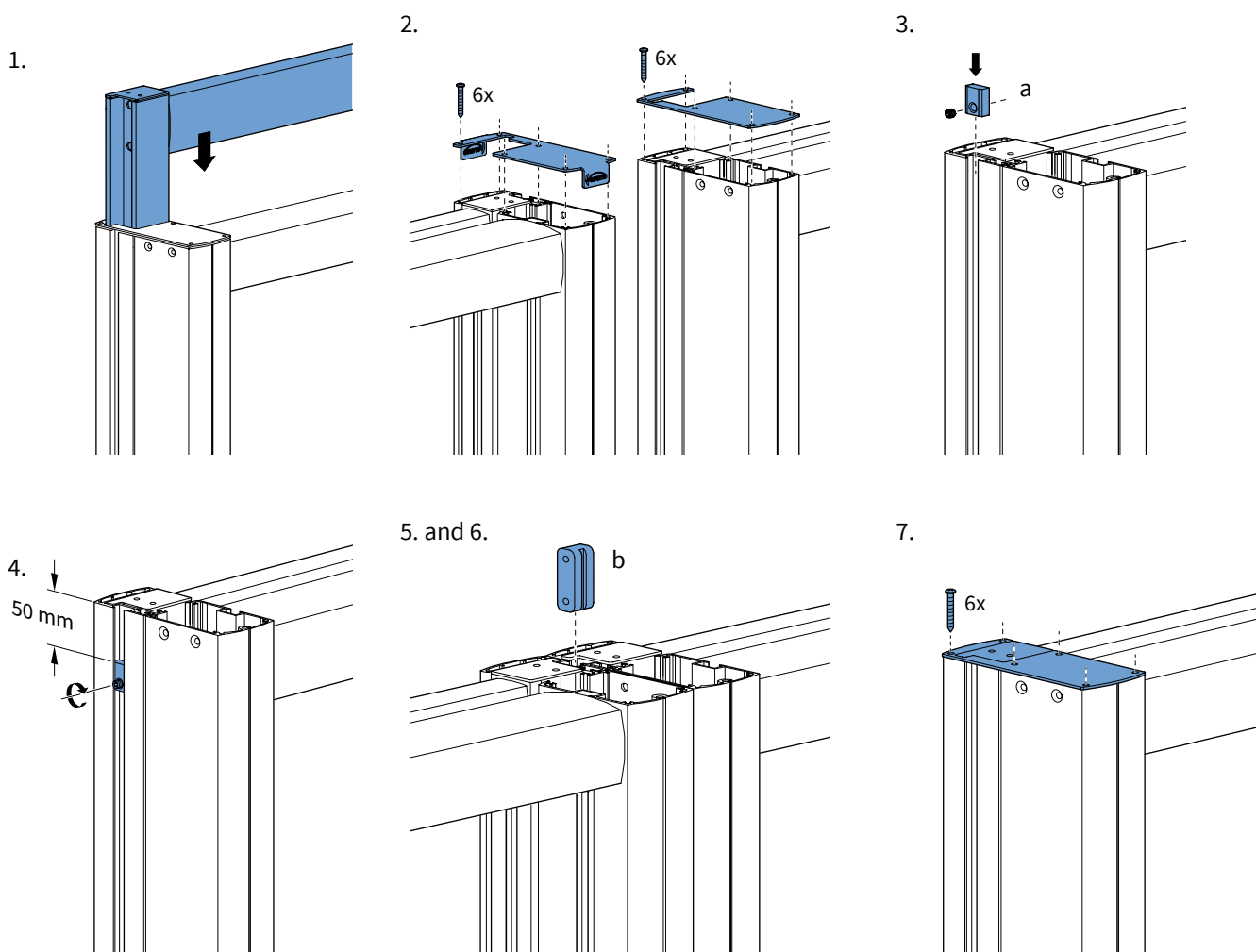


Figure 3.2 Installation linking windscreens

4. Ongoing vertical upright

The Lüderitz windscreen can be supplied with a ongoing vertical upright (optional). You should make this choice in advance, when ordering the product. Adjusting the uprights afterwards is not possible.

Windproof

A major advantage of the ongoing uprights is that when the windscreens are linked they will become windproof. In the standard uprights there is a gap of 10mm between the upper sliding parts. With the Lüderitz with ongoing uprights there is no gap.

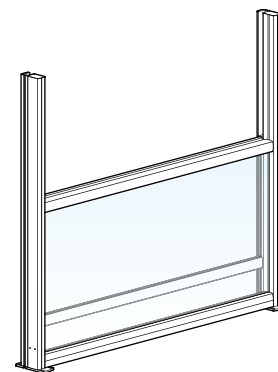


Figure 4.1 Ongoing uprights

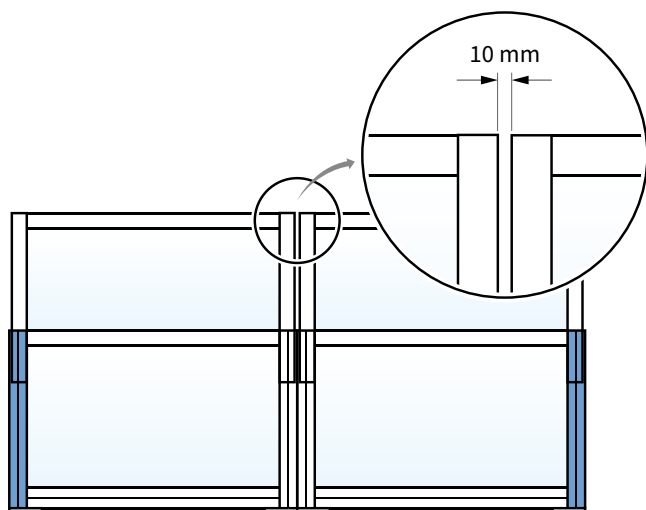
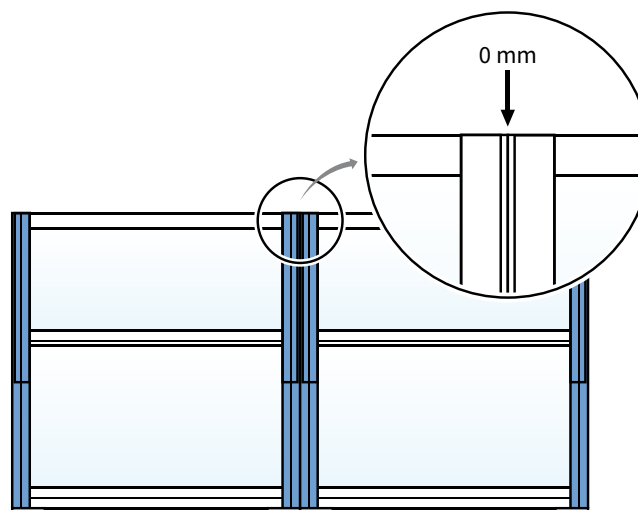


Figure 4.2 Gap with standard uprights



Windproof with ongoing uprights

Linking

The linking of the windscreens is done in the same manner as in the standard uprights. You should link the windscreens as high as possible at the top of the fixed part. This fixed part is now only higher, at the top of the ongoing uprights.

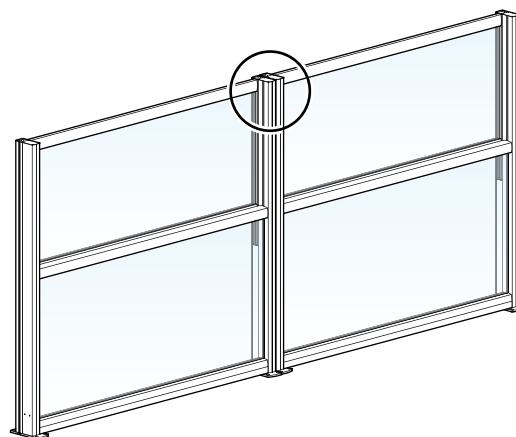


Figure 4.3 Location linking

5. Linking to a wall

When the Lüderitz windscreen is placed against a wall, it can be attached in different ways. You can opt for installation with an extended upright or a U-shaped profile.

5.1 Extended upright

If your Lüderitz windscreen is provided with an extended upright, it can be mounted directly on to the wall. For installation follow the steps below:

1. Place the windscreen against the wall and drop the sliding part completely.
2. Assemble a few screws in the slot of the upper part of the ongoing upright.

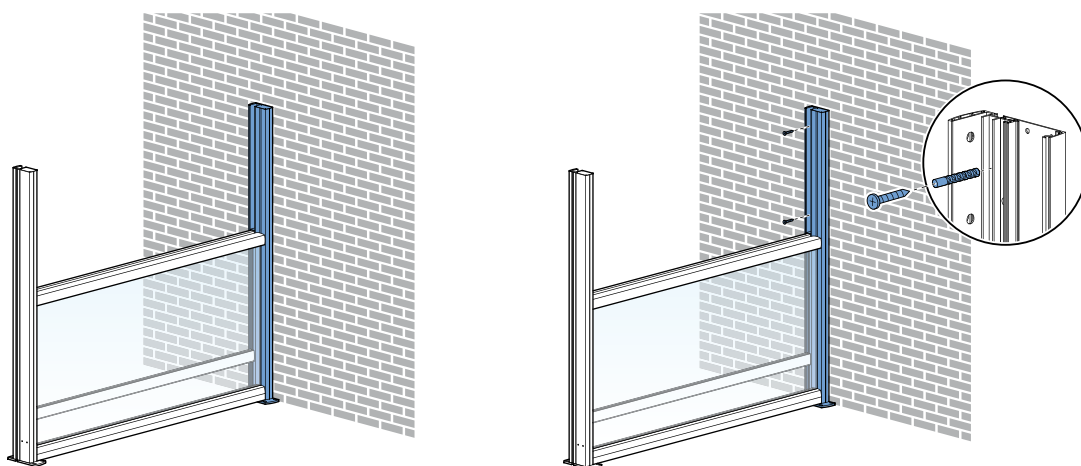


Figure 5.1 Linking to a wall with ongoing upright

6. Dimensions of various setups

A = width of the windscreen

V = fixed part

S = sliding part

L = operating side left

R = operating side right

O = opening between the windscreens



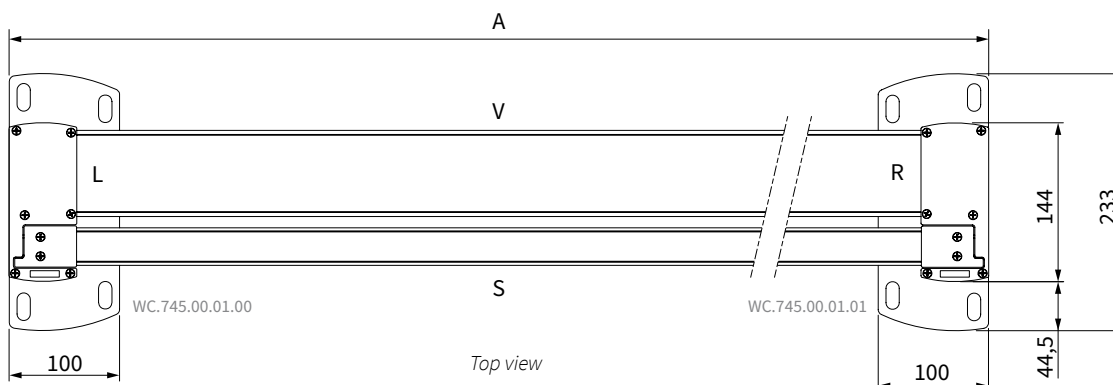
Warning!

The operating side is the side where the motor is located.

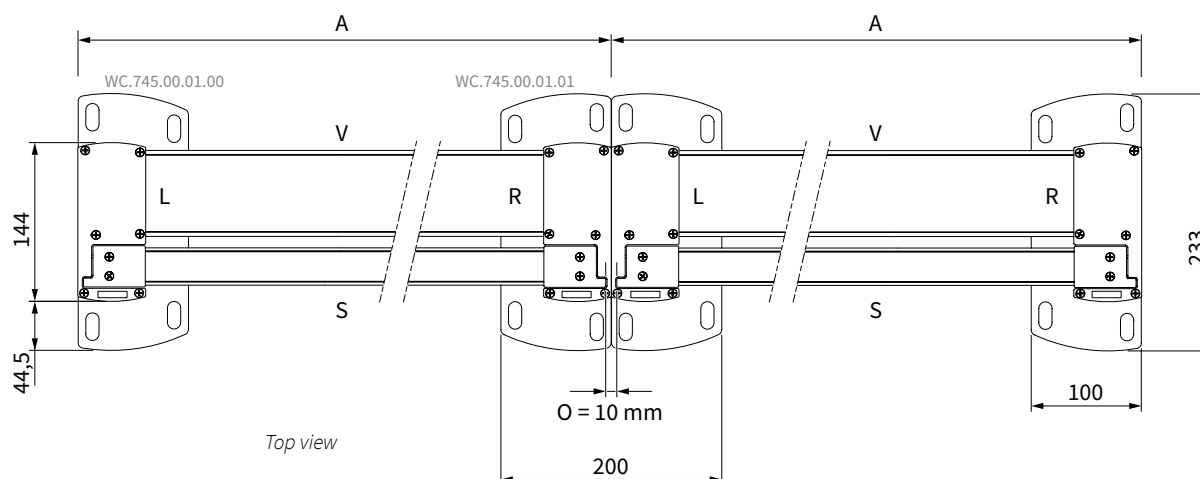
This side is always seen from the side with the sliding part (S).

Sizes in mm

6.1 Standard alignment single



6.2 Standard alignment multiple

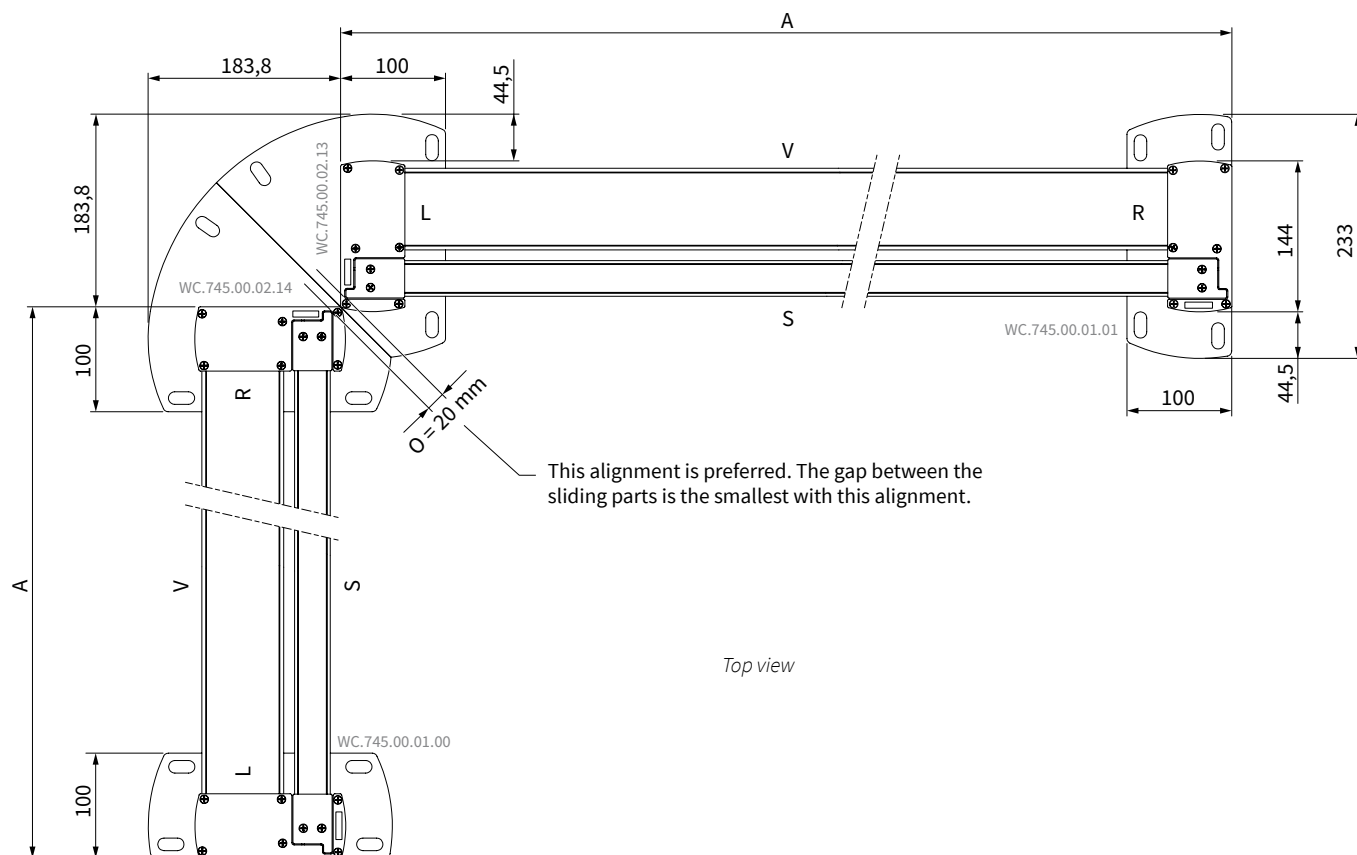


Warning!

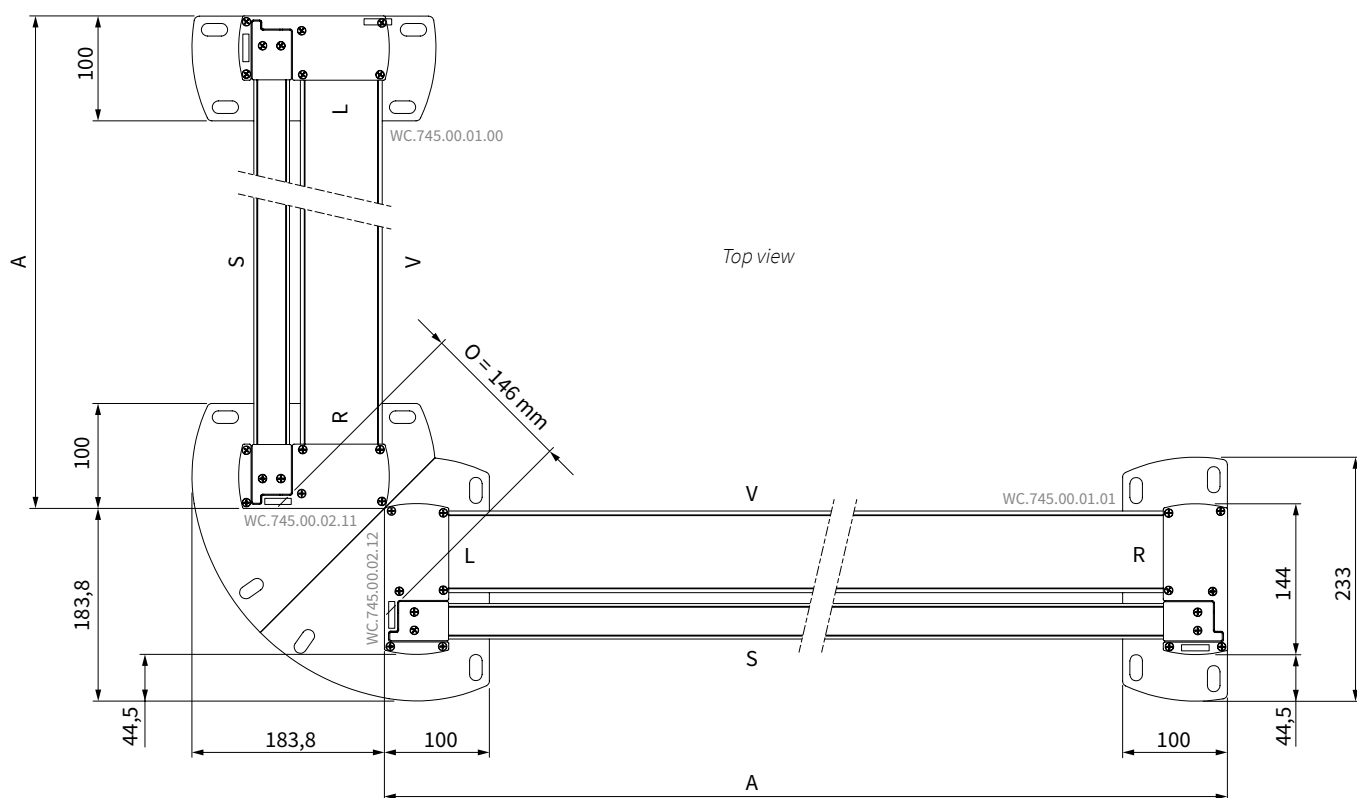
Do you have a windscreen with a Somfy Altus 50 RTS motor?

Never place two motor sides together. This may cause malfunction!

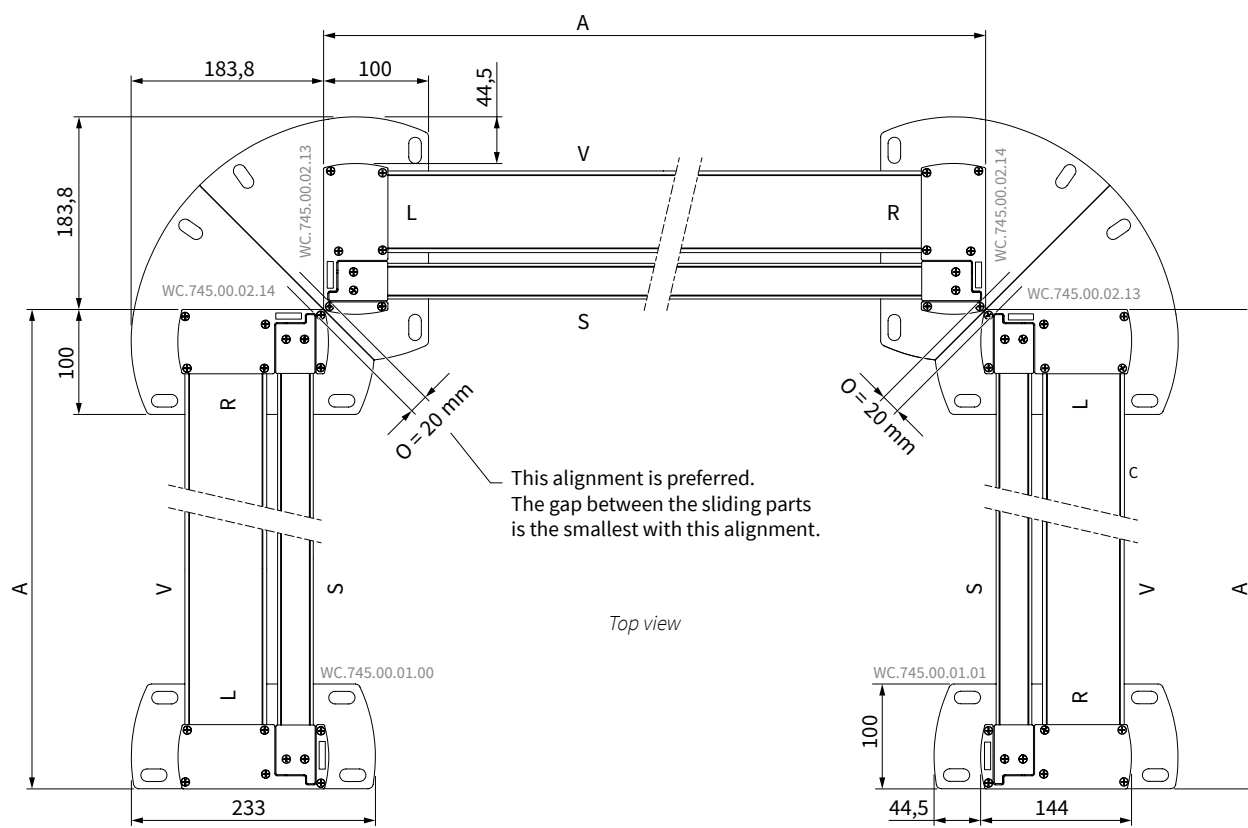
6.3 Corner alignment, sliding part at the inside



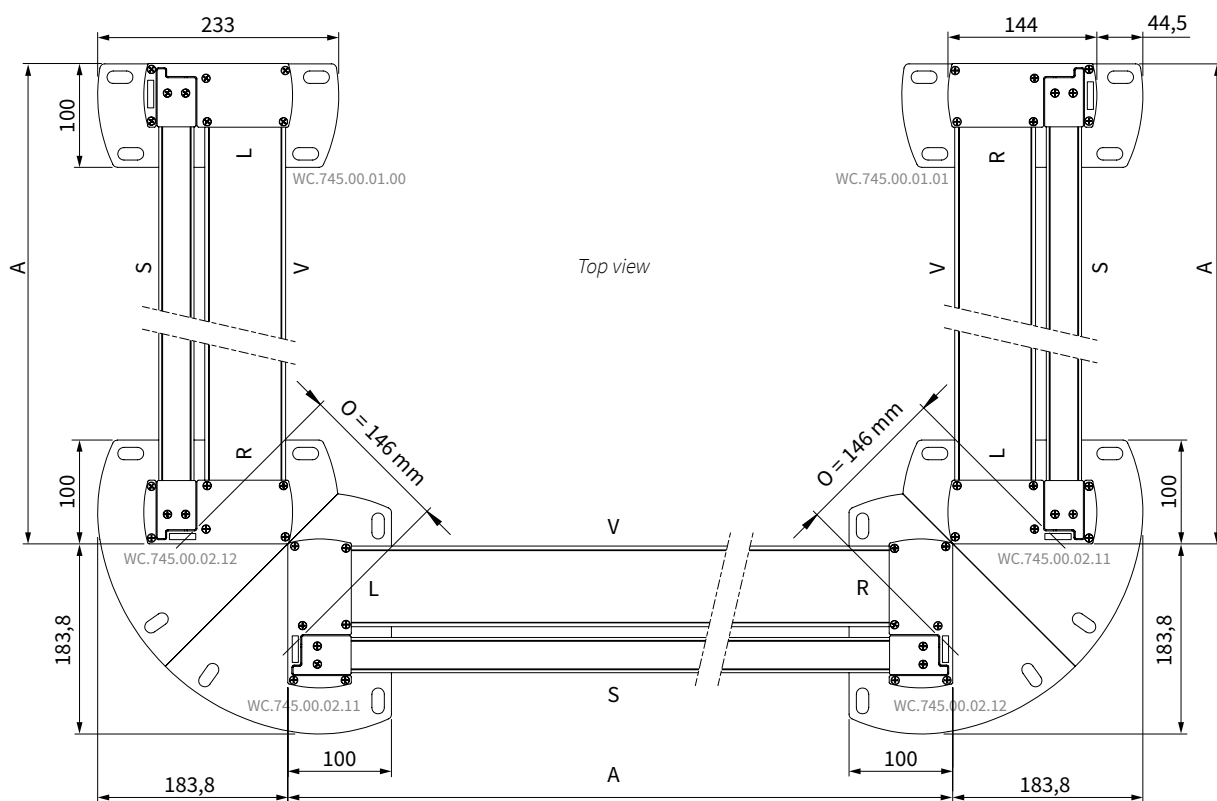
6.4 Corner alignment, sliding part at the outside



6.5 U-alignment, sliding part at the inside



6.6 U-alignment, sliding part at the outside



6.7 Balcony alignment, sliding part at the inside

A = width of the windscreen

V = fixed part

B = sliding part

W = windward side (outside)

L = operating side left

R = operating side right

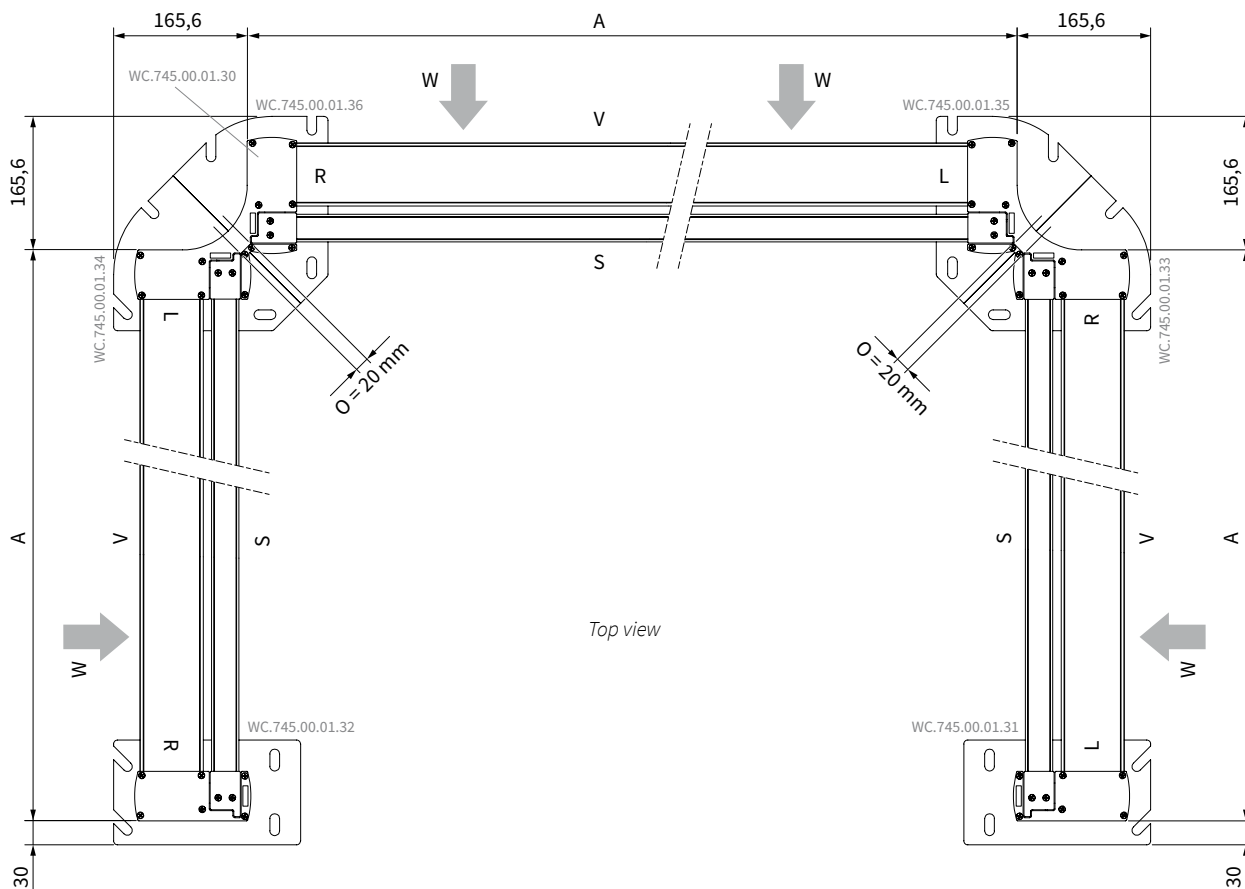
O = opening between the windscreens



Warning!

The operating side is the side where the motor is located.
With a balcony alignment this side is always seen from the side with the fixed part (V).

Sizes in mm



Special feet

The Lüderitz windscreen is with balcony alignment provided with special feet. Because on a balcony the space between windscreen and railing is very small, fitting the feet is very difficult. Therefore the special balcony feet are provided with slot-holes, so that they can be placed over the nut or bolt. For installation instructions, see page 14.

Be aware with linking the straight part!

When you want to link the straight parts on a balcony, you should use the standard footplates instead of the special balcony feet.

Linking corner

To provide extra stability to the windscreen in a corner, the fixed uprights can be linked with an ongoing covering plate.

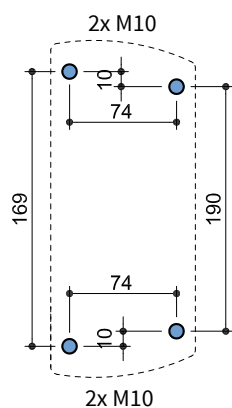
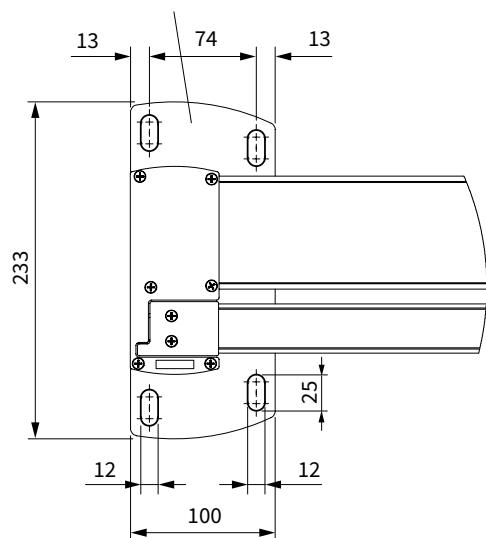


WC.745.00.01.30

7. Feet specifications

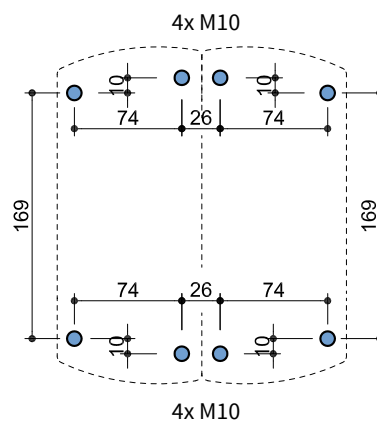
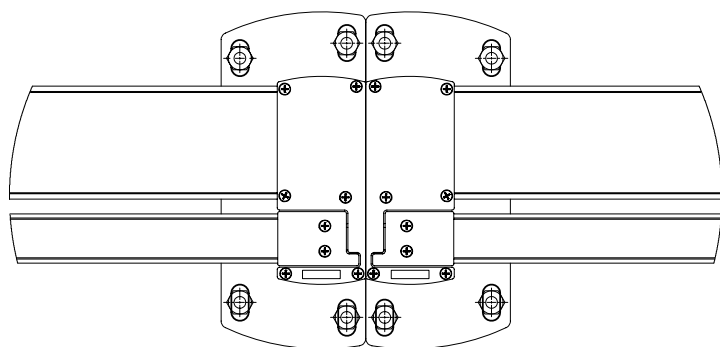
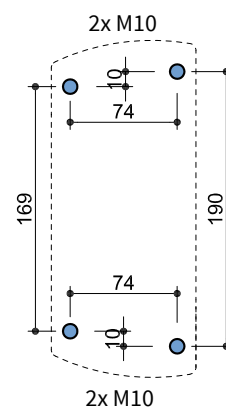
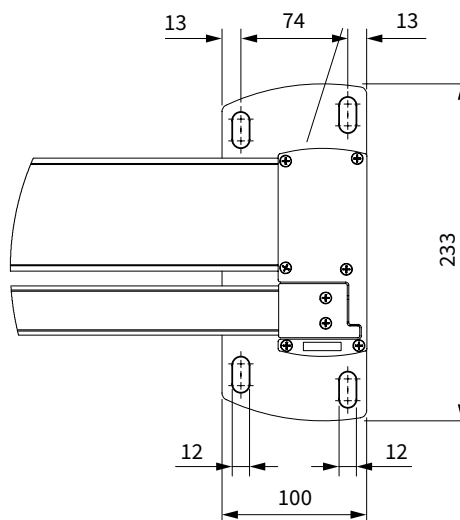
7.1 Standard alignment

Mounting foot standard left
WC.745.00.01.00



Position holes for mounting
footplates

Mounting foot standard right
WC.745.00.01.01



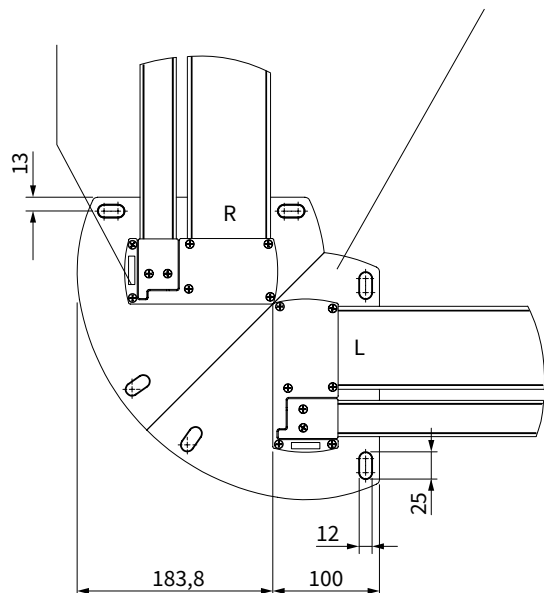
Position holes for mounting
footplates

7.2 Corner- and U-alignment

Sliding part at the outside

Mounting foot from
the right corner
WC.745.00.02.12

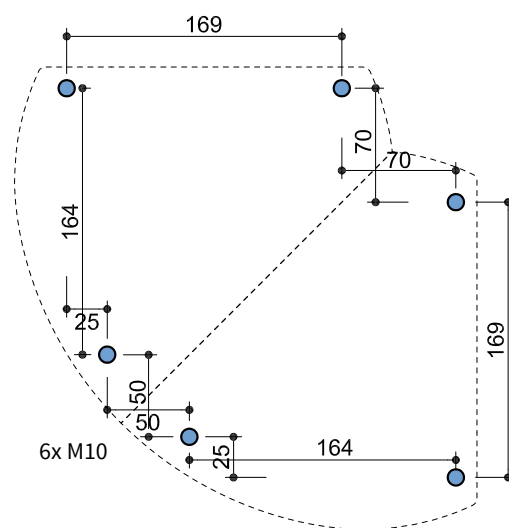
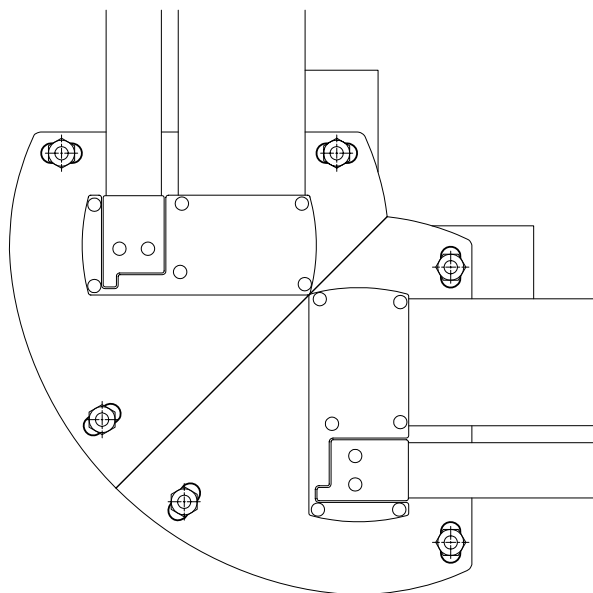
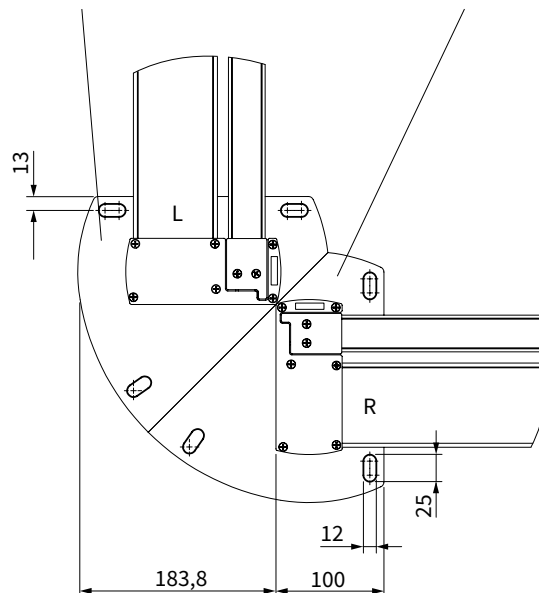
Mounting foot from
the left corner
WC.745.00.02.11



Sliding part at the inside

Mounting foot from
the left corner
WC.745.00.02.13

Mounting foot from
the right corner
WC.745.00.02.14

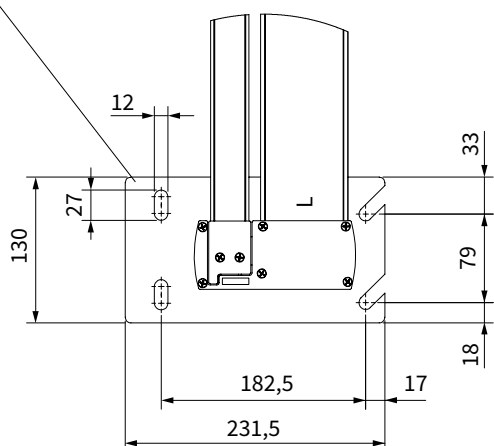


Position holes for mounting
footplates

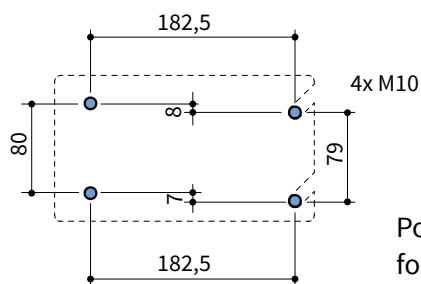
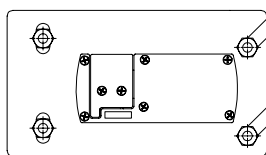
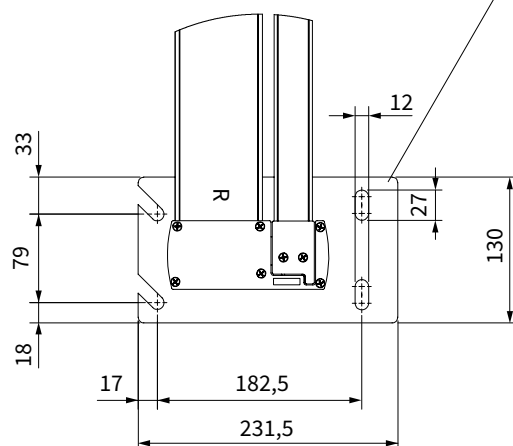
7.3 Balcony alignment

Sliding part at the inside

Balcony foot side wing, right, at the back WC.745.00.01.31



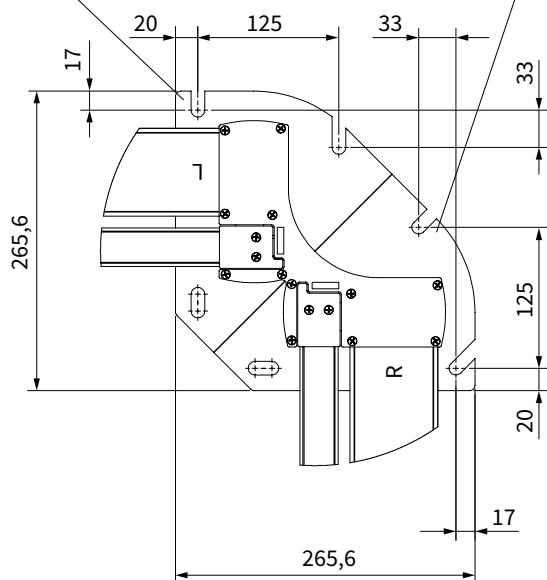
Balcony foot side sing, left, at the back WC.745.00.01.32



Position holes for mounting footplates

Sliding part at the inside

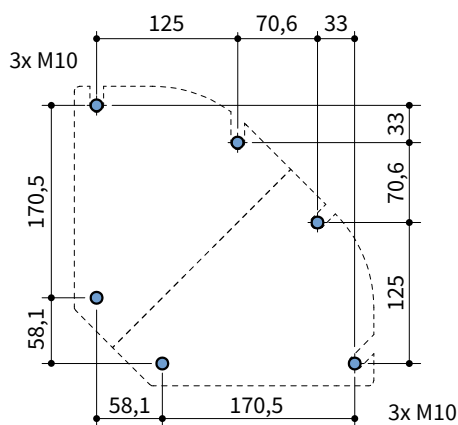
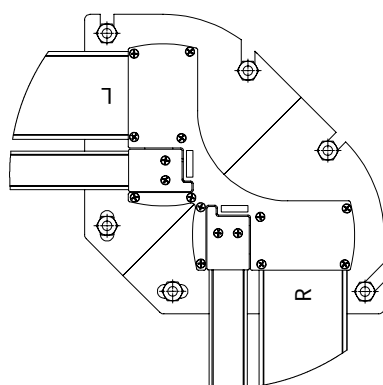
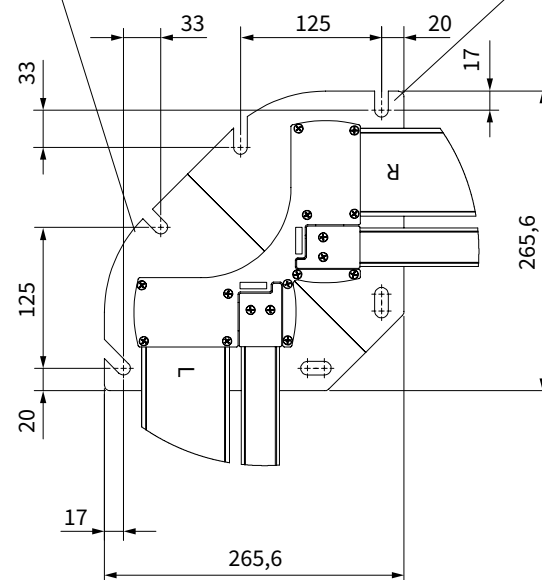
**Balcony foot, right,
at the front
WC.745.00.01.35**



**Balcony foot side wing,
right, at the front
WC.745.00.01.33**

**Balcony foot side wing,
left, at the front
WC.745.00.01.34**

**Balcony foot, left,
at the front
WC.745.00.01.36**



**Position holes for mounting
footplates**

8. Installation on balcony

When you install one or multiple windscreens on a balcony, you must take a different mounting into account.

For mounting follow the steps below:

1. Draw the outer drill holes of the windscreen ①. 1. You can find the distance measurements in section 7.3 on page 13.
2. Drill the holes, install the plugs and tighten the bolts partially in the hole.
3. Place the windscreen in front of the bolts.
4. Slide the slotted holes of the feet over the bolts until the windscreen is in its right position.
5. Drill the inner holes and install the plugs and bolts.
6. Tighten all bolts firmly. Use a open end wrench or ratchet 17 for the outer bolts.

With the installation of multiple windscreens the order of mounting is very important.

See figure 8.1. First mount windscreen ①. Then windscreen ② and ③.

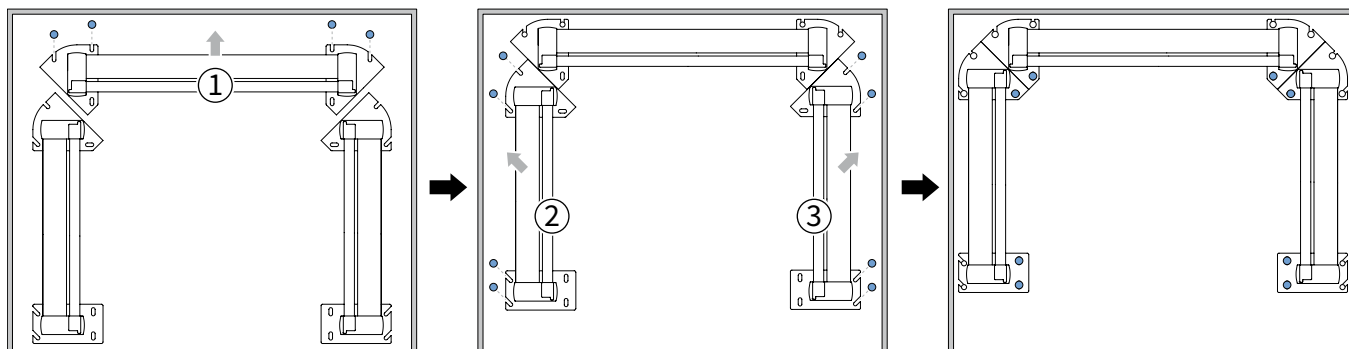


Figure 8.1 Order of mounting windscreens

9. Guiding strip (optional)

In order to operate the sliding part of the windscreen, some space between the fixed profile and sliding part is necessary. In some situations, such as at sea, on a balcony or roof terrace there may be very strong winds. As a result, the sliding part can clack. The space between the profiles can be reduced by placing a guiding strip.

Follow the steps below for mounting:

1. Make sure the windscreen is completely up.
2. Place the guiding strip (S) into the slot of the sliding part.
3. Slide the guiding strip down as far as possible until the two screw holes exceed just above the fixed upright.
4. Screw the guiding strip.

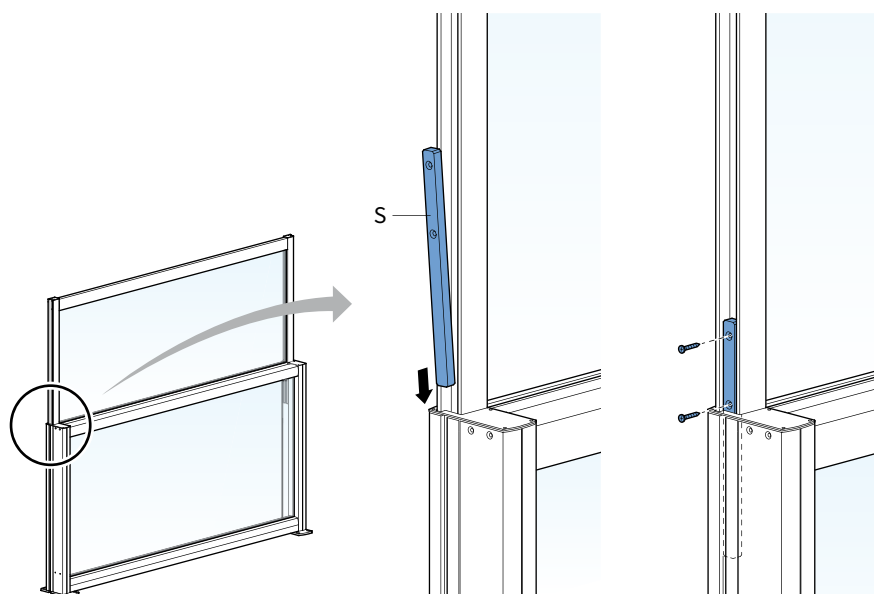


Figure 9.1 Mounting guiding strip

10. Connect operation

The operating side is the side where the motor is located. This side is always seen from the side with the sliding part.

Warning! Except for a balcony alignment this side is always seen from the side with the fixed part!

10.1 Somfy Hipro LT50 with switch

The Somfy LT50 Hipro is a wired tubular motor, operated using a switch. This is adjusted standard.

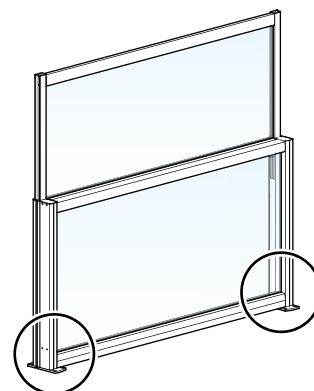
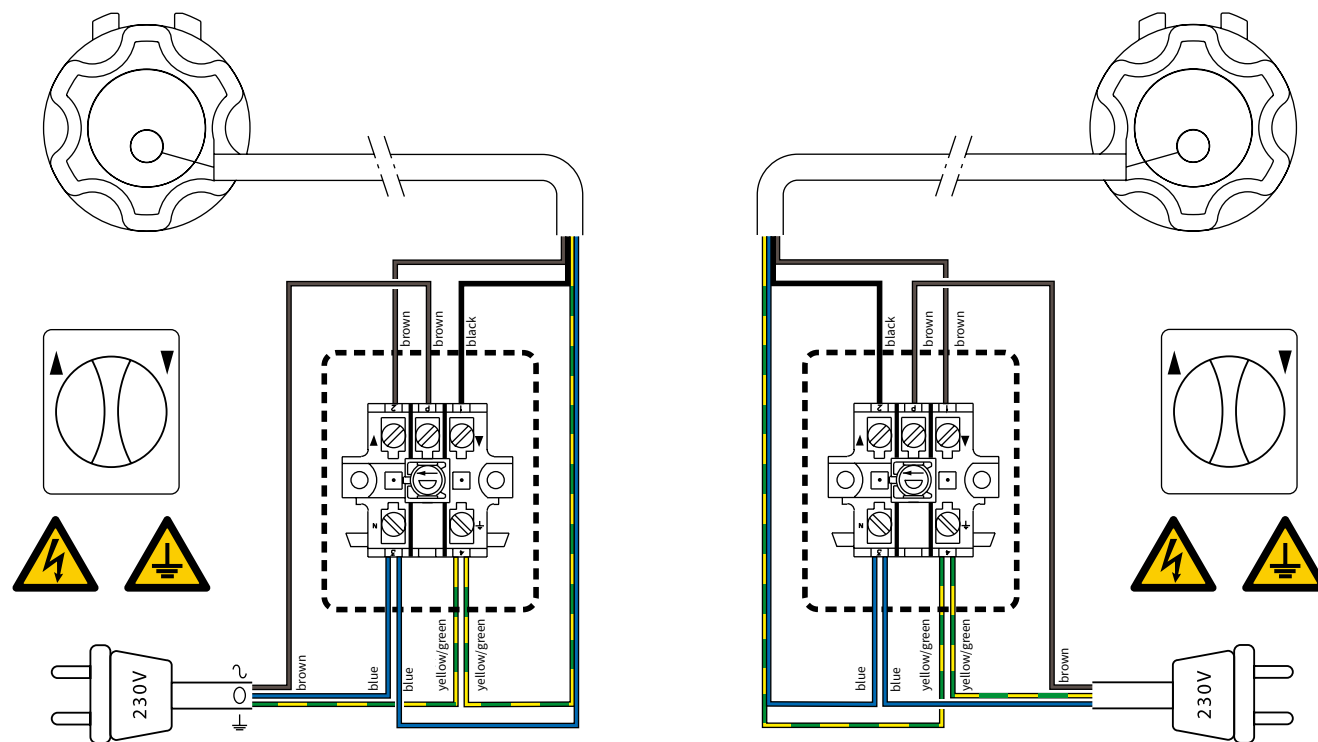


Figure 10.1 Location motor

Connect the 4-wire cord from the motor and the three-wire cord + plug according to the schedule below. Consult an electrician if necessary.

Warning!

The cables may not be extended with a connector and laid at the bottom of the Lüderitz windscreen.



Motor left

Motor right

10.2 Somfy Altus 50 RTS

The Somfy Altus 50 RTS is a tubular motor, controlled wirelessly using a remote control. This is adjusted standard. In this situation, the 3-core wire can be connected directly to the socket.

Warning!

Never place two Somfy Altus 50 RTS motors at one side together. This may cause malfunctions!

11. Maintenance

To operate your windscreen optimally, you should maintain the windscreen at some points every now and then.

- **Cleaning profiles**

Make sure the profiles are clean. Sand and dust may deteriorate the operation of the sliding part.

- **Cleaning under the motor**

With intensive use of the windscreen, we recommend you remove heaped sand and leaves under the motor 4x per year. The engine is mounted, left or right, at the bottom of the horizontal girder of the fixed part. See figure 11.1 and 11.2 and follow steps below:

1. Drop the windscreen completely.
2. Demount the covering caps at the topside of the uprights.
3. Now lift the fixed part a bit and place two blocks under it to keep it up.
4. You can now clean under the motor.
5. Remove the blocks and carefully drop the fixed part.
6. Mount the covering caps.

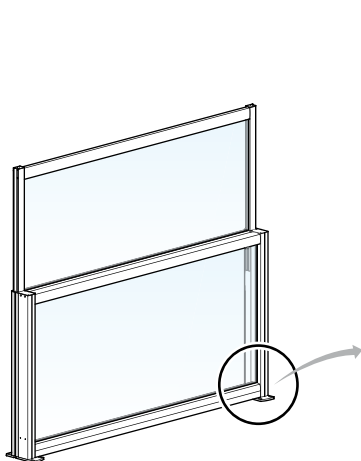


Figure 11.1 Location motor

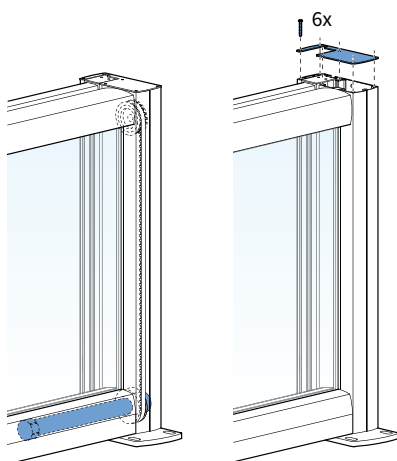
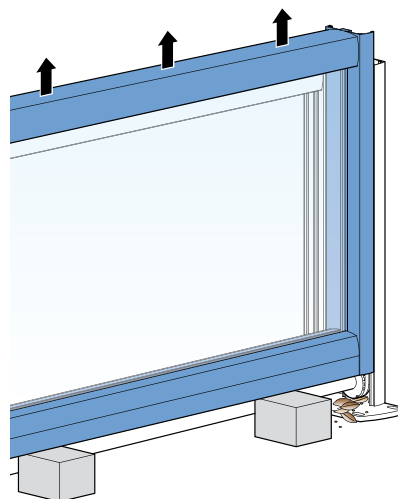


Figure 11.2 Cleaning motor



- **Cleaning toothed belt pulley**

With intensive use of the windscreen, we recommend you remove heaped sand and leaves under the toothed belt pulley 4x per year. The toothed belt pulley is mounted, left and right, at the bottom of the sliding part. A handy tool is a long clout nail.

Tip: clean the toothed belt pulley at the same time as the motor.

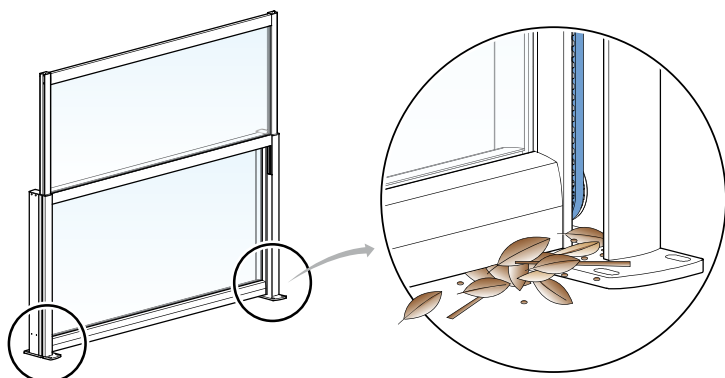
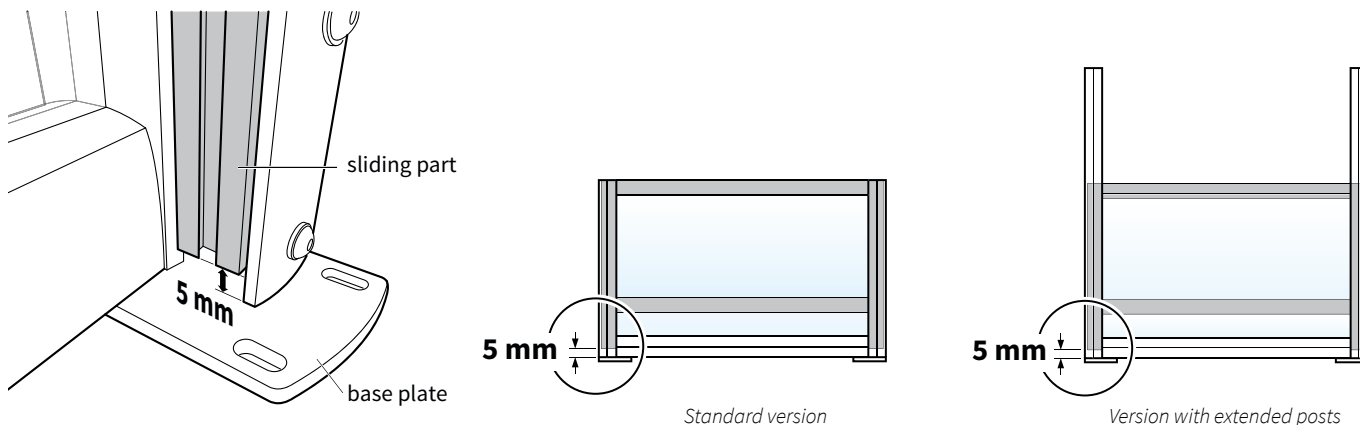


Figure 11.3 Location toothed belt pulley

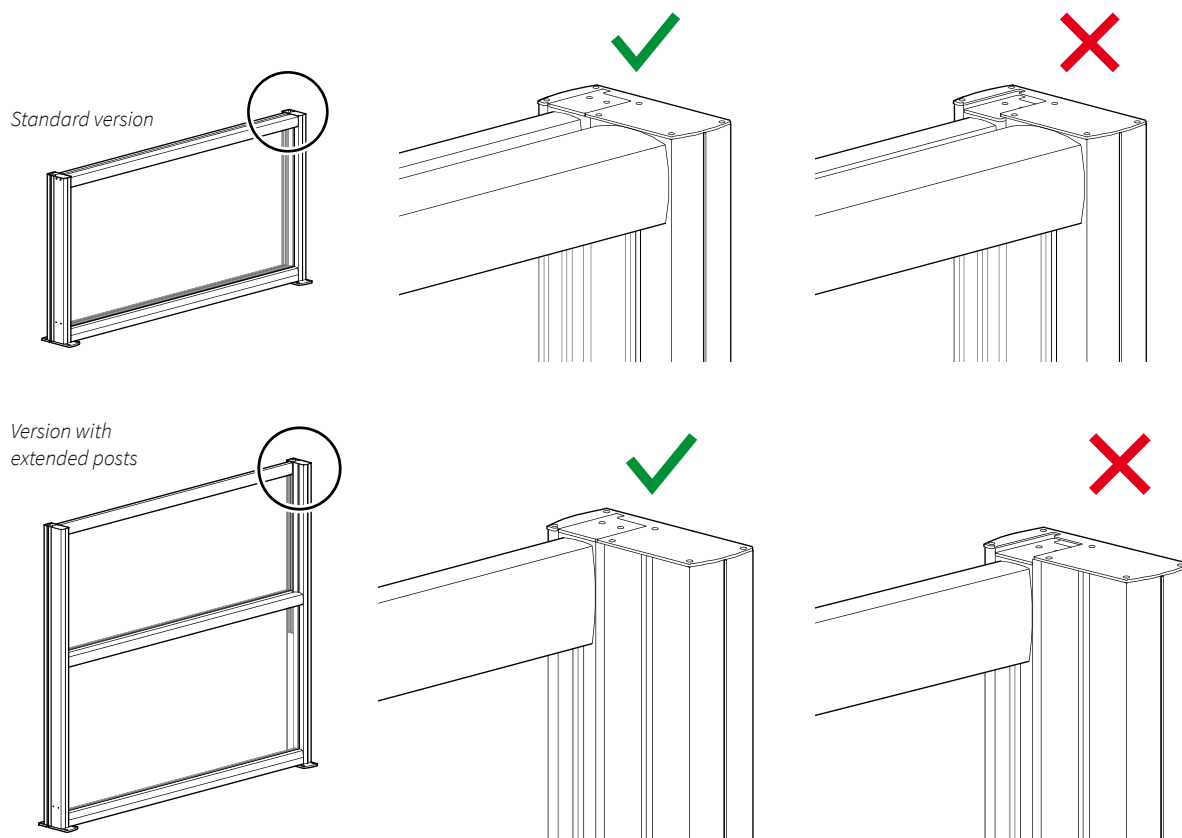
12. Check final adjustment of the motor

Before using the windscreen, check the following:



If the sliding part of the Lüderitz is at the bottom, a 5 mm space is needed between the lower side of the sliding part up to the top of the base plate.

The covers on top need to be exactly at the same place.

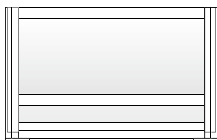


⚠ Attention!

If the sliding part fell down due to transportation or another reason, you need to adjust the motor again.

13. Final adjustment of the motor

Lüderitz - standard version



Contact with the motor

- 1** Connect the windscreen.



- 2** Flip the switch.
Anticlockwise or clockwise depends on the position of the motor.



- 3** Push the ▲ and the ▼-button at the same time to make contact with the motor.



If the windscreen doesn't react, you need to flip the switch to the other side!
Return to step 2.

- 4** Push the ▲-button and hold.
The windscreen moves.



The running direction is **correct** --> Go to step 7.
The running direction is **incorrect** --> Go to step 5.

- 5** Push and hold the **my**-button for 3 seconds.
The motor ticks.
The running direction is conversed.



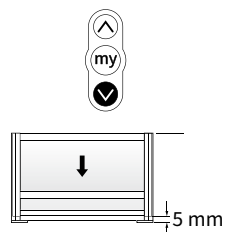
3 sec.

- 6** Push the ▲-button to check.
The windscreen moves.



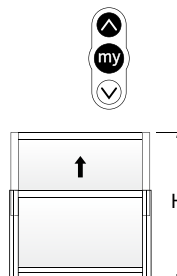
Set the top- and bottom position

- 7** Push the ▼-button.
Let the windscreen run downwards and stop the moveable part until it is 5 mm above the base plate.
Make sure that the covers are at the same height.
If necessary, adjust with the ▲-button or the ▼-button.



Attention! Don't let the moveable part rest on the base plate.
This can cause problems with the toothed belt.

- 8** Hold the **my**-button and the ▲-button at the same time.
Let the windscreen run upwards until the desired height (H) is reached.



Attention! Don't let the moveable part run higher than height (H).

- 9** Hold the **my**-button and the ▼-button at the same time.
The moveable part will run downwards (to the position that is chosen at step 7).
Hold until the motor ticks.



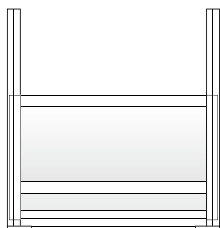
- 10** Push and hold the **my**-button for 3 seconds.
The motor ticks and the windscreen moves up and down.
This movement confirms the registration.



3 sec.

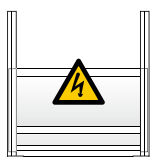
The adjusting is now finished.

Lüderitz - version with extended posts



Contact with the motor

- 1** Connect the windscreen.



- 2** Flip the switch.
Anticlockwise or clockwise depends on the position of the motor.



- 3** Push the ▲ and the ▼-button at the same time to make contact with the motor.

If the windscreen doesn't react, you need to flip the switch to the other side!
Return to step 2.



- 4** Push the ▲-button and hold.
The windscreen moves.



The running direction is **correct** --> Go to step 7.
The running direction is **incorrect** --> Go to step 5.

- 5** Push and hold the **my**-button for 3 seconds.
The motor ticks.
The running direction is conversed.



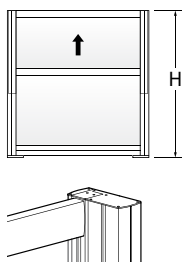
3 sec.

- 6** Push the ▲-button to check.
The windscreen moves.



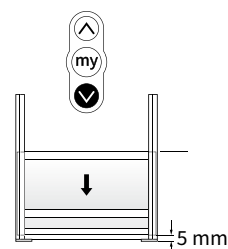
- 7** Let the windscreen run upwards until the desired height (H) is reached.

Make sure that the covers are at the same height. If necessary, adjust with the ▲-button or the ▼-button.



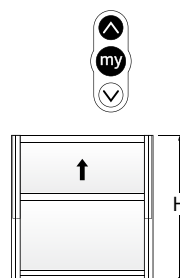
Set the top- and bottom position

- 8** Push the ▼- button.
Let the windscreen run downwards and stop the moveable part until it is 5 mm above the base plate.
Make sure that the covers are at the same height.
If necessary, adjust with the ▲-button or the ▼-button.



Attention! Don't let the moveable part rest on the base plate. This can cause problems with the toothed belt.

- 9** Hold the **my**-button and the ▲-button at the same time.
Let the windscreen run upwards until the desired height (H) is reached.



- 10** Hold the **my**-button and the ▼-button at the same time.
The moveable part will run downwards (to the position that is chosen at step 8).
Hold until the motor ticks.



- 11** Push and hold the **my**-button for 3 seconds.
The motor ticks and the windscreen moves up and down.
This movement confirms the registration.



3 sec.

The adjusting is now finished.