

Verano[®] MAKE THIS YOUR MOMENT



KOLEKCIJA TRAKASTIH ZAVESA

REGULACIJA SVETLOSTI I PRIVATNOST

Dekoracija prozora se ne koristi samo u dekorativne, već i u funkcionalne svrhe. Jedna od najvažnijih osobina dekoracije prozora je blokiranje upadnog sunčevog svetla. Upadno sunčevo svetlo može izazvati pregrevanje i negativno utiče na vizuelni komfor. Stepenn zaštite od svetlosti i toplote zavisi od boje i materijala dekoracije prozora.

Da li si znao da je dekoracija prozora takođe relativno nepoznat način za uštedu energije? Izolaciona vrednost prozora, odnosno koliko dobro (ili loše) prozori zadržavaju toplotu u domu, značajno se poboljšava dodavanjem dekoracije prozora jer se time stvara dodatni vazdušni sloj. Dekoracija prozora može povećati izolacionu vrednost jednostrukog stakla i do 60%!

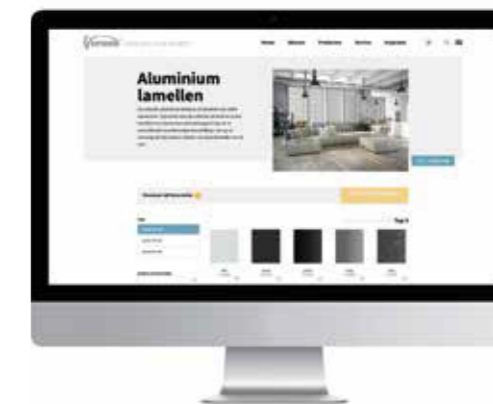
U ovoj brošuri pronaći ćeš sve boje i karakteristike kolekcije lamela. Želiš više informacija o našoj kolekciji dekoracije prozora? Pogledaj našu brošuru o dekoraciji prozora.





BESPLATNI UZORCI BOJA

Na sajtu www.verano.nl/gratis-kleurstalen možete besplatno zatražiti pet uzoraka boja. Na ovaj način možete osetiti materijale i uskladiti boje sa elementima iz vašeg enterijera.



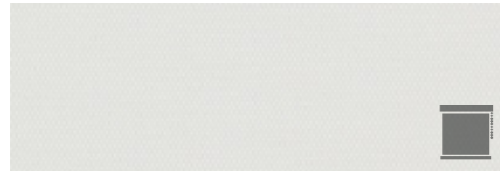
Skenirajte ovaj QR kod kamerom svog pametnog telefona i odmah zatražite besplatne uzorke boja!


KOLEKCIJA TEKSTILA

Kolekcija tkanina sastoji se od 100% poliesterskih (PES) tkanina, tkanina koje su kombinacija poliestera i PVC-a, kao i tkanina napravljenih od 100% recikliranog PET-a (kao iz PET flaša). Kolekcija tkanina je dostupna u tri različite transparentnosti: prozirna, poluprozirna i blackout (zatamnjujuća). Karakteristično za kolekciju tkanina je to što omogućava prelepu filtraciju svetlosti i širok izbor tekstura.

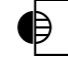


TKANINA

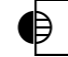


76.0035 PG: 0 
100% PES
• 89 • 127




76.0034 PG: 0 
100% PES
• 89 • 127




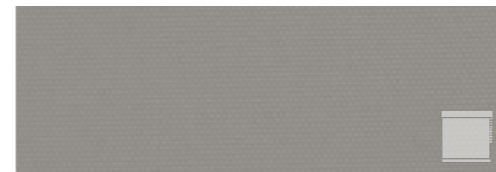
76.0033 PG: 0 
100% PES
• 89 • 127




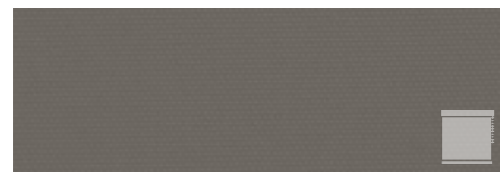
76.0032 PG: 0 
100% PES
• 89 • 127




76.0031 PG: 0 
100% PES
• 89 • 127




76.0030 PG: 0 
100% PES
• 89 • 127




76.0036 PG: 0 
100% PES
• 89 • 127

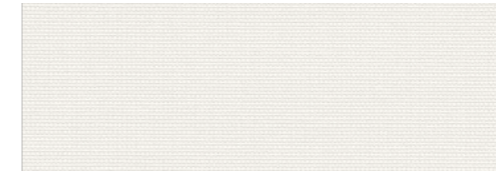



76.0029 PG: 0 
100% PES
• 89 • 127



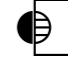
76.0028 PG: 0 
100% PES
• 89 • 127

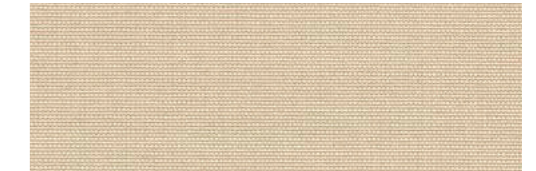
TKANINA



76.0001 PG: 1 
100% PES
• 89 • 127
TS: 15
RS: 77
AS: 8




76.0002 PG: 1 
100% PES
• 89 • 127
TS: 14
RS: 68
AS: 18




76.0003 PG: 1 
100% PES
• 89 • 127
TS: 14
RS: 48
AS: 38

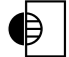


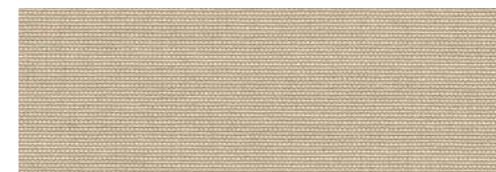
76.0016 PG: 1 
100% PES
• 89 • 127
TS: 15
RS: 62
AS: 23




76.0019 PG: 1 
100% PES
• 89 • 127
TS: 12
RS: 44
AS: 44



76.0010 PG: 1 
100% PES
• 89 • 127
TS: 6
RS: 15
AS: 79



76.0004 PG: 1 
100% PES
• 89 • 127
TS: 12
RS: 42
AS: 46




76.0005 PG: 1 
100% PES
• 89 • 127
TS: 12
RS: 47
AS: 41




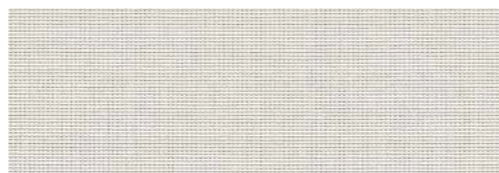
76.0018 PG: 1 
100% PES
• 89 • 127
TS: 3
RS: 11
AS: 86




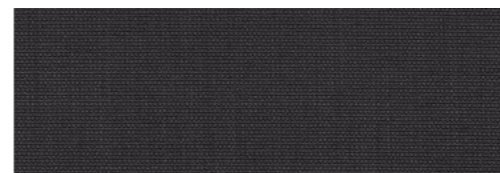
76.0017 PG: 1 
100% PES
• 89 127
TS: 14
RS: 58
AS: 28




76.0006 PG: 1 
100% PES
• 89 127
TS: 9
RS: 55
AS: 68



76.0011 PG: 1 
100% PES
• 89 127
TS: 20
RS: 55
AS: 25



76.0013 PG: 1 
100% PES
• 89 127
TS: 1
RS: 4
AS: 95




76.0054 PG: 1 
100% PES
• 89 127
TS: 0
RS: 0
AS: 20




76.0055 PG: 1 
100% PES
• 89 127
TS: 0
RS: 69



76.0012 PG: 1 
100% PES
• 89 127
TS: 17
RS: 54
AS: 29




76.0007 PG: 1 
100% PES
• 89 127
TS: 9
RS: 27
AS: 64



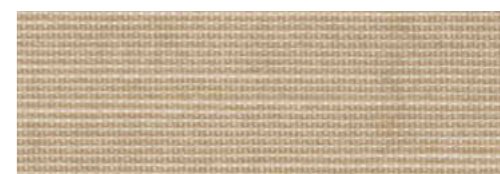
76.0014 PG: 1 
100% PES
• 89 127
TS: 8
RS: 8
AS: 61



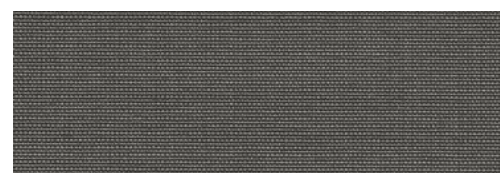
76.0056 PG: 1 
100% PES
• 89 127
TS: 0
RS: 0
AS: 55




76.0057 PG: 1 
100% PES
• 89 127
TS: 43
RS: 53
AS: 4




76.0058 PG: 100% PES TS: 31 RS: 31
• 89 127 AS: 18



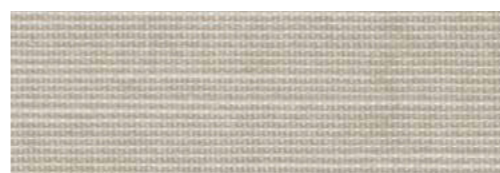
76.0015 PG: 1 
100% PES
• 89 127
TS: 5
RS: 8
AS: 87




76.0008 PG: 1 
100% PES
• 89 127
TS: 11
RS: 31
AS: 58




76.0009 PG: 1 
100% PES
• 89 127
TS: 3
RS: 8
AS: 89




76.0059 PG: 1 
100% PES
• 89 127
TS: 34
RS: 41
AS: 25




76.0061 PG: 1 
100% PES
• 89 127
TS: 22
RS: 32
AS: 46

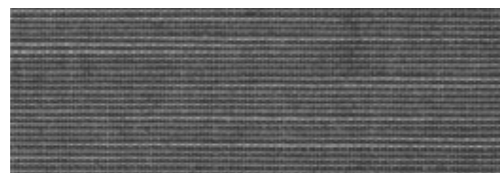



76.0060 PG: 1 
100% PES
• 89 127
TS: 27
RS: 45
AS: 28

TKANINA




76.0062 PG: 1 
100% PES
• 89 127
TS: 11
RS: 24
AS: 65




76.0063 PG: 1 
100% PES
• 89 127
TS: 6
RS: 15
AS: 79




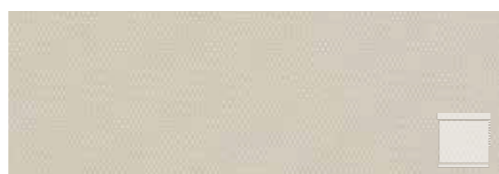
76.0064 PG: 1 
100% PES
• 89 127
TS: 9
RS: 6
AS: 94



76.0043 PG: 1 
100% PES
• 89 127
TS: 12
RS: 52
AS: 38




76.0042 PG: 1 
100% PES
• 89 127
TS: 15
RS: 45
AS: 40




76.0041 PG: 1 
100% PES
• 89 127
TS: 12
RS: 51
AS: 37



76.0039 PG: 1 
100% PES
• 89 127
TS: 3
RS: 11
AS: 86



76.0040 PG: 1 
100% PES
• 89 127
TS: 6
RS: 26
AS: 68




76.0044 PG: 1 
100% PES
• 89 127
TS: 15
RS: 44
AS: 41

TKANINA



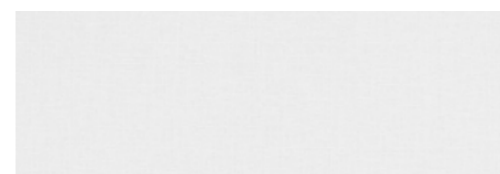
76.0038 PG: 1 
100% PES
• 89 127



76.0045 PG: 1 
100% PES
• 89 127
TS: 16
RS: 51
AS: 33



76.0037 PG: 1 
100% PES
• 89 127





76.0085 PG: 2 
100% PES
• 89 127
TS: 85
RS: 2
AS: 13 



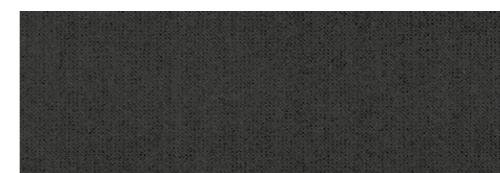
76.0086 PG: 2 
100% PES
• 89 127
TS: 85
RS: 2
AS: 13 




76.0088 PG: 2 
100% PES TS: 86 RS: 0 AS: 14
• 89 127 





76.0087 PG: 2 
100% PES
• 89 127
TS: 83
RS: 3
AS: 14 



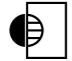

76.0089 PG: 2 
100% PES
• 89 127
TS: 83
RS: 0
AS: 17 



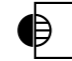

76.0046 PG: 2 
70% PVC 30% PES TS: 19
• 89 127
RS: 60
AS: 21 

TKANINA





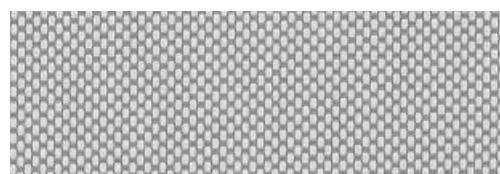
76.0047 PG: **2** 
 70% PVC 30% PES
 • 89 127 TS: 14
 RS: 40 AS: 46 





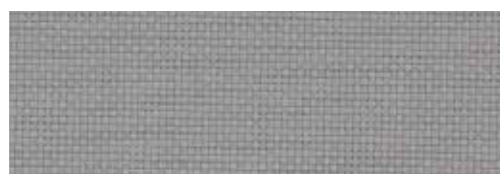
76.0052 PG: **2** 
 70% PVC 30% PES
 • 89 127 TS: 0
 RS: AS: 45 





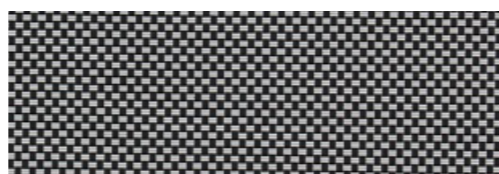
76.0053 PG: **2** 
 70% PVC 30% PES
 • 89 127 TS: 0
 RS: AS: 20 





76.0048 PG: **2** 
 70% PVC 30% PES
 • 89 127 TS: 0
 RS: 3 AS: 97 

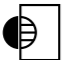



76.0051 PG: **2** 
 70% PVC 30% PES
 • 89 127 TS: 0
 RS: AS: 64 





76.0049 PG: **2** 
 70% PVC 30% PES
 • 89 127 TS: 0
 RS: AS: 84 





76.0050 PG: **2** 
 70% PVC 30% PES
 • 89 127 TS: 0
 RS: AS: 32 



76.0081 PG: 100% **2** 
 Gerecycled PET TS: 0
 • 89 127 AS: 94 RS: 6 

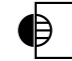



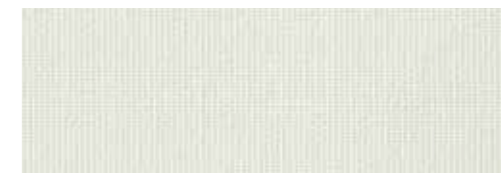
76.0082 PG: **2** 
 100% Gerecycled PET
 • 89 127 TS: 84
 RS: 5 AS: 11 

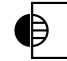



76.0083 PG: **2** 
 100% Gerecycled PET
 • 89 127 TS: 82
 RS: 5 AS: 13 





76.0084 PG: **2** 
 100% Gerecycled PET
 • 89 127 TS: 86
 RS: 4 AS: 10 





76.0065 PG: **1** 
 100% PES
 • 89 127 





76.0066 PG: **1** 
 100% PES
 • 89 127 





76.0067 PG: **1** 
 100% PES
 • 89 127 





76.0068 PG: 100% **1** 
 PES • 89 127 





76.0069 PG: **1** 
 100% PES
 • 89 127 



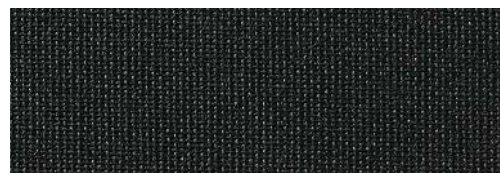
76.0070 PG: **1** 
 100% PES
 • 89 127 





76.0071 PG: **1** 
 100% PES
 • 89 127 TS: 46
 RS: 54 AS: 0 



TKANINA

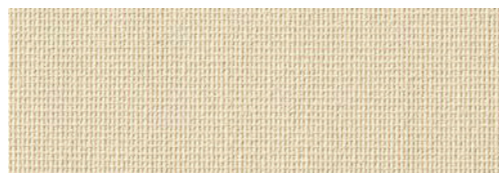
TKANINA





76.0072 PG: 1  
100% PES
• 89
127
TS: 48
RS: 52
AS: 0





76.0073 PG: 1  
100% PES
• 89 127
TS: 40
RS: 53
AS: 7





76.0074 PG: 1  
100% PES
• 89 127
TS: 43
RS: 53
AS: 4





76.0075 PG: 1  
100% PES
• 89 127
TS: 31
RS: 51
AS: 18





76.0076 PG: 1  
100% PES
• 89 127
TS: 34
RS: 41
AS: 25





76.0077 PG: 1  
100% PES
• 89 127
TS: 27
RS: 45
AS: 28





76.0078 PG: 1  
100% PES
• 89 127
TS: 22
RS: 32
AS: 46



76.0079 PG: 1  
100% PES
• 89 127
TS: 11
RS: 24
AS: 65




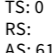
76.0080 PG: 1  
100% PES
• 89 127
TS: 6
RS: 15
AS: 79

TKANINA


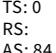


76.0024 PG: 3  
100% PES
• 89 127
TS: 0
RS: AS: 24



76.0025 PG: 3  
100% PES
• 89 127
TS: 0
RS: AS: 61



76.0026 PG: 100% 3  
PES • 89 127
TS: 0
RS: AS: 84


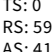


76.0027 PG: 3  
100% PES
• 89 127
TS: 0
RS: AS: 81




76.0020 PG: 2  
100% PES
• 89 127
TS: 0
RS: 65
AS: 35



76.0021 PG: 2  
100% PES
• 89 127
TS: 0
RS: 59
AS: 41



76.0022 PG: 2  
100% PES
• 89 127
TS: 0
RS: AS: 52

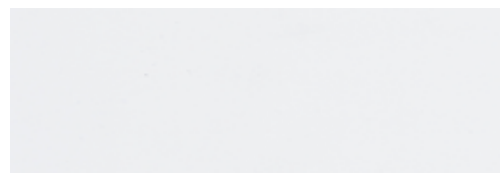



76.0023 PG: 2  
100% PES
• 89 127
TS: 0
RS: 36
AS: 64

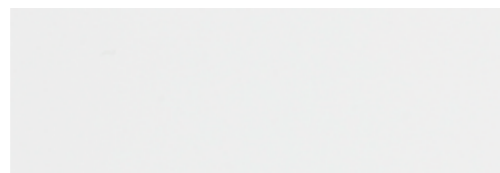
KOLEKCIJA PVC


Kolekcija PVC sastoji se od lamela od 100% PVC-a. Karakteristično za kolekciju PVC-a je da su PVC lamele zvučno izolacione i vatrootporne, da štite od vlage i bakterija i da su dostupne u različitim širinama lamela.

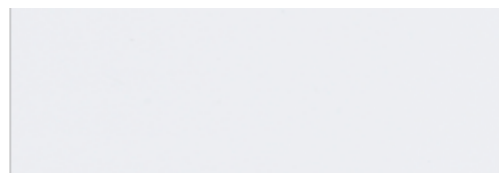





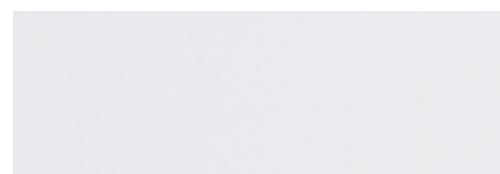
20.1000 PG: **0**
 52 70 89 127 




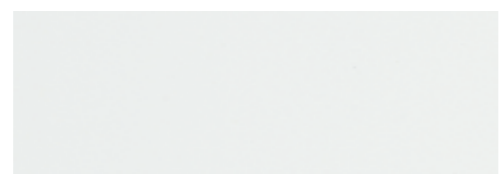
20.1001 PG: **1**
 52 70 89 127 




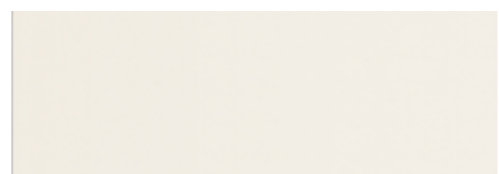
20.1715 PG: **1**
 52 70 89 127 




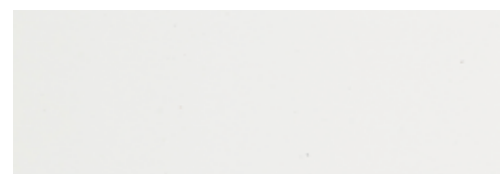
20.1720 PG: **1**
 52 70 89 127 




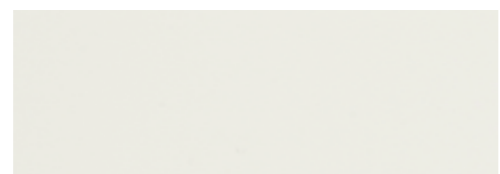
20.1719 PG: **1**
 52 70 89 127 




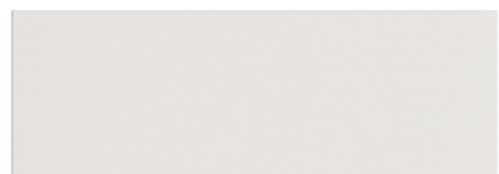
20.1118 PG: **0**
 52 70 89 127 




20.0022 PG: **0**
 52 70 89 127 




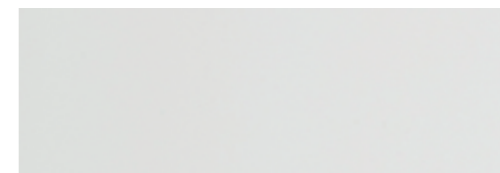
20.1120 PG: **1**
 70 89 52 127 




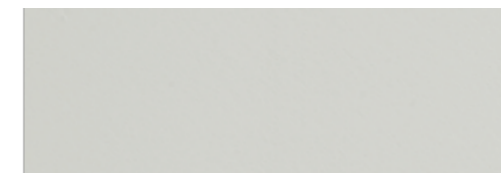
20.1707 PG: **1**
 52 70 89 127 




20.1003 PG: **1**
 52 70 89 127 




20.1119 PG: **0**
 52 70 89 127 




20.1708 PG: **1**
 52 70 89 127 




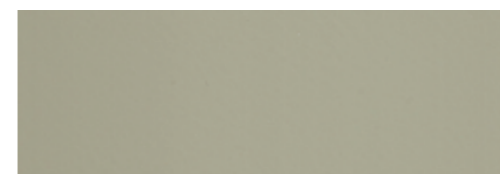
20.1706 PG: **1**
 52 70 89 127 




20.1705 PG: **1**
 52 70 89 127 




20.1709 PG: **1**
 52 70 89 127 




20.1704 PG: **1**
 52 70 89 127 




20.1710 PG: **1**
 52 70 89 127 



20.1703 PG: **1**
 52 70 89 127 




20.1711 PG: **1**
 •52 70 89
 127 




20.1716 PG: **1**
 •52 70 89
 127 




20.1712 PG: **1**
 •52 70 89
 127 




20.1702 PG: **1**
 •52 70 89
 127 




20.1721 PG: **2**
 •52 70 89
 127 




20.1283 PG: **1**
 •52 70 89 127 




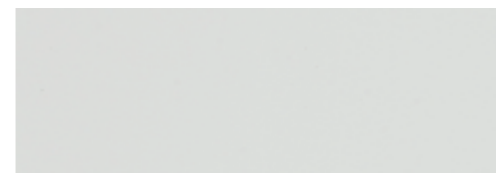
20.1713 PG: **2**
 52 70 89 127 





20.0096 PG: **1**
 52 70 89 127 




20.1087 PG: **0**
 52 70 89 127 




20.1717 PG: **2**
 52 70 89 127  





20.1054 PG: **0**
 52 70 89 127 




20.1714 PG: **1**
 52 70 89 127 




20.1718 PG: **2**
 52 70 89 127  




20.1056 PG: **0**
 52 70 89 127 




20.1055 PG: **0**
 52 70 89 127 



20.1090 PG: **0**
 52 70 89 127 



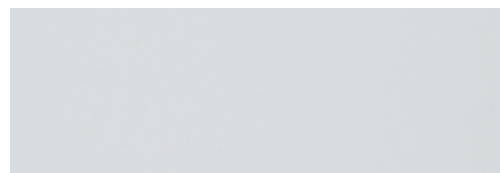
20.1089 PG: **0**
 52 70 89 127 

KOLEKCIJA ALUMINIJUMA

Kolekcija aluminijuma sastoji se od lamela od 100% aluminijuma. Karakteristično za kolekciju aluminijuma je da su aluminijumske lamele vatrootporne i dostupne u različitim širinama lamela.



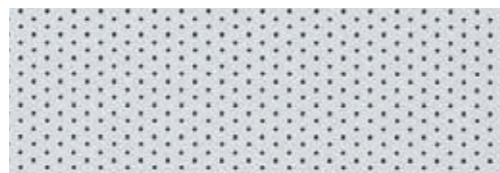
ALUMINIUM



10.2005

PG: 1

52 70 89



10.2373

PG: 2

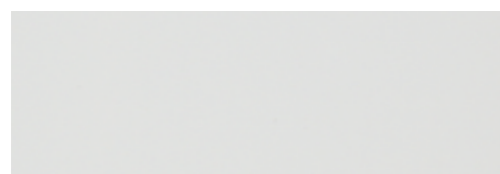
52 70 89



10.2402

PG: 3

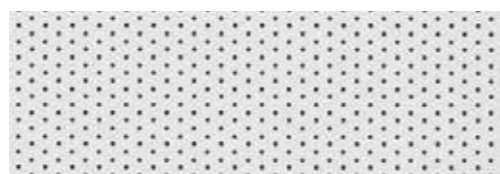
52 70 89



10.2006

PG: 1

52 70 89



10.2804

PG: 2

52 70 89



10.2305

PG: 2

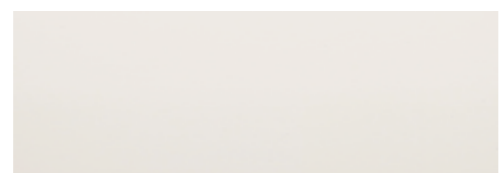
52 70 89



10.2730

PG: 3

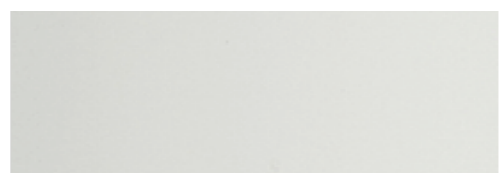
52 70 89



10.2801

PG: 2

52 70 89



10.2608

PG: 2

52 70 89



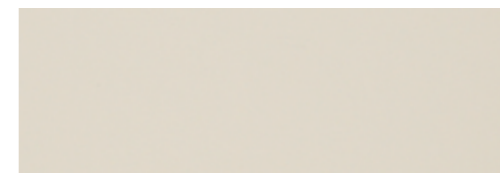
ALUMINIUM



10.2271

PG: 2

52 70 89



10.2276

PG: 1

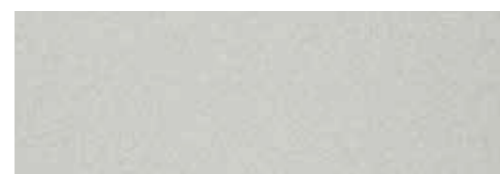
52 70 89



10.2330

PG: 1

52 70 89



10.2371

PG: 3

52 70 89



10.2303

PG: 2

52 70 89



10.2355

PG: 1

52 70 89



10.2350

PG: 1

52 70 89



10.2803

PG: 2

52 70 89



10.2348

PG: 1

52 70 89



ALUMINIJUM



10.2802

PG: 1

52 70 89



10.2301

PG: 1

52 70 89



10.2003

PG: 1

52 70 89



10.2372

PG: 3

52 70 89



10.2732

PG: 3

52 70 89



10.2414

PG: 2

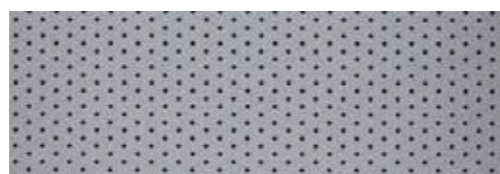
52 70 89



10.2291

PG: 1

52 70 89



10.2294

PG: 2

52 70 89



10.2275

PG: 1

52 70 89



10.2332

PG: 2

52 70 89



10.2375

PG: 3

52 70 89



10.2331

PG: 1

52 70 89



10.2363

PG: 1

52 70 89



10.2800

PG: 2

52 70 89



ALUMINIJUM

SVOJSTVA MATERIJALA

MATERIJAL

Tkanine u kolekciji lamela sastoje se od 100% poliesterskih (PES) tkanina, tkanina od kombinacije poliestera i PVC-a, tkanina od 100% recikliranog PET-a, PVC-a i aluminijuma. Poliester je sintetičko vlakno (veštačko vlakno) sa visokom otpornošću na habanje, dobrom stabilnošću i visokom postojanošću boje na svetlost. Poliester se gotovo ne skuplja i ne gužva, lako se čisti i dobro je otporan na sunčevu svetlost. PVC je skraćenica za polivinil-hlorid i predstavlja termoplastični materijal. Prednosti PVC-a su dobra mogućnost obrade, niska zapaljivost i svojstvo samogašenja, kao i nepropustljivost za mnoge supstance, uključujući ulja. 100% reciklirani PET znači da su tkanine izrađene od 100% recikliranog materijala dobijenog od PET flaša. Aluminijum je čvrst, dugotrajan i jednostavan za održavanje.

Trakaste zavese | Boja 20.1001

TRANSPARENTNOSTI

Tkanine u kolekciji lamela dostupne su u različitim stepenima transparentnosti: od prozirnih do “verduisterend plus” (zatomnjujućih). Prozirna tkanina omogućava difuzno prodiranje svetlosti, a boja prozirne tkanine određuje količinu svetlosti koja prolazi. Svetlije boje propuštaju više svetlosti nego tamnije. Zatomnjujuća “plus” tkanina pruža visok stepen zatomnjenja, ali 100% zatomnjenje nikada nije moguće zbog praznina koje nastaju sa strane lamela.

Prozirna

Poluprozirna

 **Zatomnjujuća plus**

ENERGETSKE VREDNOSTI

Tkanine u kolekciji lamela imaju tri svojstva: prenos energije (TS), refleksiju energije (RS) i apsorpciju energije (AS). Karakteristike prenosa energije, refleksije energije i apsorpcije energije zajedno uvek imaju ukupnu vrednost od 100%.

PRENOS ENERGIJE (TS)

Količina sunčeve energije koja prolazi kroz tkaninu. Što je veći procenat, to više energije tkanina propušta.

REFLEKSIJA ENERGIJE (RS)

Količina sunčeve energije koja se odbija od tkanine. Što je veći procenat, to se više energije reflektuje od tkanine.

APSORPCIJA ENERGIJE (AS)

Količina sunčeve energije koja se apsorbuje u tkanini. Što je veći procenat, to se više energije apsorbuje u tkanini. Tamnije boje tkanine, na primer, apsorbuju više energije i otpuštaju više toplote.



VODIČ ZA TKANINE

Ispod različitih tkanina u kolekciji tkanina nalaze se simboli koji prikazuju svojstva tkanine. Uz pomoć vodiča za tkanine ispod možeš odrediti koja tkanina najbolje odgovara tvojim željama. Imaš li pitanja o specifičnim svojstvima tkanina? Poseti Verano® partnera. Najbližeg partnera možeš brzo i jednostavno pronaći na www.verano.nl.

72.1831

Broj boje

 PG: **3**

Cena kategorija



Prozirna



Poluprozirna



Propušta svetlost



Zatamnjujuća plus

25% PES + 75% PVC

Sastav materijala

89

Širina lamele

(mm)



Vatrootporan

TS

Prenos energije

(%)

RS

Refleksija energije

(%)

AS

Apsorpcija energije

(%)



Boje tkanine sa ovim simbolom dostupne su i u rolo zavesama.



Broj boje lamele	Broj boje rolo zaveses	Broj boje lamele	Broj boje rolo zaveses
76.0028	72.1402	76.0038	72.1522
76.0030	72.1448	76.0039	72.1588
76.0033	72.1443	76.0040	72.1526
76.0034	72.1477	76.0041	72.1532
76.0035	72.1403	76.0042	72.1503
76.0035	72.1403	76.0043	72.1507
76.0036	72.1482	76.0044	72.1546
76.0037	72.1502	76.0045	72.1545



Na ovu brošuru se ne mogu ostvariti nikakva prava.
23753977-230214

